

# Economic Indicators for the Laramie Area



Pictured is the New Wyoming Technology Business Center at the University of Wyoming

*Wyoming Center for Business & Economic Analysis, Inc.*

Volume XI, Number 2  
September, 2008

# TABLE OF CONTENTS

FRONT MATTER	
Preface .....	ii
ECONOMIC ANALYSIS	
Economic Indicators Analysis .....	1
Data Tables .....	3
Laramie/Albany County Profile.....	9
Economic Indicator Graphs.....	11
Data Sources.....	15

## COMMUNICATIONS

Data Center Phone: (307) 632-1347

Data Center FAX: (307) 632-1368

Editor e-mail: [rto@wyomingeconomicdata.com](mailto:rto@wyomingeconomicdata.com)

Web Site: [www.wyomingeconomicdata.com](http://www.wyomingeconomicdata.com)

Mailing Address: Wyoming Center for Business &  
Economic Analysis, Inc.  
1720 Carey Ave., Suite 520  
Cheyenne, WY 82001

Editor .....	R.T. O'Gara
Research Assistance.....	Cynthia Branch
Typography .....	Stacy Shultz-Bisset

For subscription rates, please see the last page.

The articles appearing in this publication represent the opinions of the authors and do not necessarily reflect the views of funding agencies and organizations. Duplication or quotation of material in this publication is welcomed, but it is requested that the Center be credited.

Statistics through June 2008  
Released: September 2008

## **PREFACE**

**Readers should note that the *Economic Indicators for the Laramie Area* is published twice a year. An Annual Trends edition is published in March of each year and then a third quarter edition is published in September of each year. This report is for the third quarter of 2008.**

Residential and commercial gas hookups were not provided by Source Gas. Metered water taps were also not available this quarter.

# ECONOMIC INDICATORS

## ANALYSIS

### POPULATION

Recent population estimates from the U.S. Census Bureau reported that Albany County's population as of July 1, 2007 stood at 32,227 persons. Past estimates were revised sharply upwards by the Census Bureau this year. For example, original 2006 estimates (released in July 2007) had the county's population at 30,360 and the current revised estimates now show it at 32,497, an increase of 7.0 percent. Interestingly, the 2007 estimate again showed a decline in population of 270 persons or a decrease of 0.8 percent from 2006. The Bureau, up until this year, had consistently reported declining population figures for the county since the 2000 Census. According to their past figures, the county had lost 1,654 individuals since the last official census (2000). The new estimates now show that the county has gained 213 persons (0.1%) since 2000, but that there have been losses in 2005, 2006 and 2007.

We again suggest that these estimated population declines are strongly contradicted by the overall economic growth experienced by Albany County since 2000. For instance, average monthly employment between 2000 (17,688) and 2007 (18,244) rose by 536 workers or by 3.0 percent over this period.

### EMPLOYMENT

Wyoming Department of Employment statistics, which are still preliminary, through June 2008 had the county's average monthly employment off by 0.9 percent from the 2007 average of 18,224. This decline amounted to 158 workers. From second quarter 2007 to second quarter 2008, the decrease in employment was 1.1 percent. Albany County's labor force was also down by 1.3 percent or 238 workers over this latter period.

The county's unemployment rate averaged 2.4 percent over the current quarter. This was a fractional decline of 0.1 percent from second quarter 2007's average rate of 2.5 percent.

Somewhat worrisome was the continued weakness in help-wanted advertisements. This series remained 42 percent less than its comparable second quarter 2006 average of 119 per week. The current quarter's average was 68 by comparison.

Tables 1 and 4 provide additional details on the county's labor market situation.

### GENERAL BUSINESS

While the changes in the absolute numbers were not particular large this quarter, the growth rates in the 3 series under General Business registered solid gains. Automobile registrations, for example, increased 5 percent from second quarter 2007 and rose 18 percent from first quarter 2008.

Out-bound airplane boardings (enplanements) were up 3.5 percent from one year ago and stood 10 percent higher than the comparable level in 2006.

Retail sales, measured by the proxy variable total taxable sales, climbed 6 percent higher when compared to second quarter 2007. This indicator was up only 1.5 percent from comparable 2006 levels however. When annualized, second quarter retail sales amounted to 523,752 million dollars which would mean the series was down 7.4 percent from estimated 2007 retail sales of 565,178 million dollars. The expectation is that retail sales data will show a rebound over the last half of 2008.

### CONSTRUCTION

Table 1 presents construction statistics for the City of Laramie and Albany County. Second quarter 2008 indicators suggested that there has been a solid decline in this sector over the first half of the year. However, a comprehensive examination of all the data showed that this has really not been the case. Commercial construction, driven by large construction projects at the University, boosted the overall the construction sector to levels well above 2007. Residential single-family construction levels (city and rural) were down moderately, in both dollar values and units.

First, the total number of building permits averaged 134 per month over the first six months of 2008. This average was off by 17 permits per month, or 11.3 percent, when compared to the 2007 annual average of 151 per month. However, the total dollar value of all construction in the county averaged 15.5 million dollars per month for the first half of this year which was an increase of 75 percent over the comparable 2007 average of 8.9 million dollars per month. Most of this increase was due to the construction of a new IT building and an addition to the main library at the University. Combined these two permits equaled 64 million dollars worth of new construction activity and served to swamp all other construction projects. The total value of

all permits thus far issued in 2008 was equal to 93 million dollars as compared to 107 million dollars for all of 2007. These figures do not include to upcoming remodeling of the University's College of Business building. This project is estimated to cost 54 million dollars.

Over the first half of 2008, 68 single-family residential building permits were issued for the both the city and rural areas of the county. For the first half of 2007, the comparable figure was 85 permits. Thus far in 2008, the number of new single-family residences permitted has declined by 20 percent from the same period in 2007. The average dollar value of a residential permit issued within city limits was \$155,134 over the first half of this year which was an increase of 5.8 percent over the comparable 2007 average (\$146,676). However, the total value of all city single-family construction was down 3 percent from 2007 on an average monthly basis, \$1,326,052 and \$1,365,223 respectively.

By comparison, there were 19 rural single-family permits issued over the first six months of 2008 as compared to a total of 32 for the first six months of 2007. The total dollar value of rural single-family home construction thru June of 2008 stood at \$4.6 million as compared to \$6.0 million for the comparable 2007 period, down 21 percent. The average value of each issued permit was \$306,766 over the first half of 2008 as compared to \$202,853 for all of 2007. This difference can be explained by the fact that there was a one million dollar home permitted in early 2008 that skewed the current 2008 average higher.

## **FINANCIAL ACTIVITY**

All fiscal measures presented in Table 2 posted solid annual increases from comparable 2007 figures, second quarter to second quarter. Most importantly, actual tax receipts to local governmental entities rose 6.1 percent from this time one year ago, but remained 12.3 percent behind second

quarter 2006. Distributions from the 1% Optional Sales tax also increased at a nearly identical rate as actual receipts, up 6.2 percent from second quarter 2007, and were also below second quarter 2006 by 11.6 percent. These gains suggested the local economy has sustained solid retail sales and services through the first half of 2008. As the table demonstrated, there were small declines in some of these indicators from the first to second quarter, but they were not of significant magnitude to generate concern.

Receipts from the 4% Lodging Tax were up by 20 percent from one year ago and 43 percent from two years ago. This series also posted a 31 percent increase from first to second quarter 2008. These gains can be attributed to the addition of 700 new hotel rooms over the past 18 months to the existing motel/hotel base of 1,800 rooms.

## **UTILITIES**

Commercial and residential electric utility hook-ups indicators increased 1.6 percent and 2.8 percent respectively this quarter when compared to comparable 2007 data. When viewed long term, both series provide a good measure of how the local economy has performed. For instance, residential electric hook-ups which averaged 13,468 over the first half of 2008 were 5 percent higher than the 2005 average of 12,832 and were up 13 percent from 2000. On an average annual basis, this indicator has grown at an average rate of 1.6 percent since 2000.

The commercial hook-ups indicator did even better. Its annualized growth rate since 2000 was 2.1 percent with the fastest growth occurring between 2001 and 2003.

These two series then provide a range (1.6% to 2.1%) for real economic growth since 2000 for the Albany County economy.

**TABLE 1**

	A 2Q06	B 2Q07	C 1Q08	D 2Q08	PERCENTAGE CHANGE A TO D	PERCENTAGE CHANGE B TO D	PERCENTAGE CHANGE C TO D
<b>EMPLOYMENT</b>							
Total Civilian Labor Force (LAUS)	19,040	18,582	18,768	18,344	-3.66	-1.28	-2.26
Total Employment (LAUS)	18,524	18,111	18,237	17,898	-3.38	-1.17	-1.86
Total Unemployment (LAUS)	517	471	532	446	-13.68	-5.37	-16.11
Unemployment Rate (LAUS)	2.7%	2.5%	2.8%	2.4%	-10.30	-4.04	-14.11
Initial Unemployment Claims	8	14	18	16	88.00	9.30	-14.55
Help Wanted Ads	91	119	67	68	-24.46	-42.46	1.63
<b>GENERAL BUSINESS ACTIVITY</b>							
Auto Registrations New & Used	197	191	170	200	1.69	4.90	17.65
Enplanements - Laramie Regional Airport	727	775	845	802	10.27	3.48	-5.13
Total Taxable Sales (\$000)	128,963	123,825	132,396	130,938	1.53	5.74	-1.10
<b>CONSTRUCTION</b>							
Single Fam Bldg Permits - Laramie	18	38	15	34	88.89	-10.53	126.67
Total Bldg Permits - (Laramie) (a)	159	142	106	162	1.46	13.58	52.52
Rural Bldg Permits	21	17	4	13	-38.71	-25.49	192.31
Value of Authorized Construction (\$000)	4,296	6,405	26,379	4,638	7.96	-27.59	-82.42
Residential (\$000)	721	1,909	898	1,754	143.17	-8.11	95.44
Total Business Construction (\$000)	0	2,078	9,413	326		-84.33	-96.54

(a) Data includes building and non-building.

Note: Each figure reported under Employment, General Business, and Construction is a monthly average for the quarter, except Total Taxable Sales (\$000) is the total for the quarter.

**TABLE 1A**

<b>Housing Profile Albany County 2007 Authorized Construction by Permit</b>					
MONTH	SFU	DUPLEX UNITS	TRI & FOUR PLEX	MULTI- FAMILY	TOTAL UNITS
January	4	4	0	0	8
February	8	0	0	0	8
March	10	0	0	0	10
April	11	0	0	0	11
May	25	0	0	0	25
June	27	0	0	0	27
July	15	2	4	12	33
August	20	0	0	0	20
September	16	0	0	0	16
October	17	0	0	48	65
November	11	0	12	0	23
December	14	0	4	0	18
Year to Date	178	6	20	60	264

<b>Housing Profile Albany County 2008 Authorized Construction by Permit</b>					
MONTH	SFU	DUPLEX UNITS	TRI & FOUR PLEX	MULTI- FAMILY	TOTAL UNITS
January	4	0	0	0	4
February	4	0	0	0	4
March	10	0	0	12	22
April	20	0	4	0	24
May	12	0	0	0	12
June	18	0	0	0	18
July					0
August					0
September					0
October					0
November					0
December					0
Year to Date	68	0	4	12	84

**TABLE 2**

	A 2Q06	B 2Q07	C 1Q08	D 2Q08	PERCENTAGE CHANGE A TO D	PERCENTAGE CHANGE B TO D	PERCENTAGE CHANGE C TO D
<b>FINANCIAL ACTIVITY (a)</b>							
Total Tax Collections (\$000)	7,927	6,642	7,127	7,077	-10.72	6.55	-0.70
Wholesale & Retail Tax Collections (\$000)	3,291	2,987	3,693	3,470	5.45	16.19	-6.03
Actual Receipts to County Entities (\$000) (b)	2,794	2,309	2,478	2,450	-12.30	6.11	-1.14
Total 1% Sales & Use Tax Distributions (\$000)	1,290	1,074	1,156	1,141	-11.55	6.22	-1.26
Total Lodging Tax Distributions (\$)	95,036	112,886	103,561	135,524	42.60	20.05	30.86

(a) All Series are reported as quarterly totals

(b) This total includes the 4% Sales and 4% Use Tax, the 1% Sales and 1% Use Tax, the Out of State Use Tax, and the Out of State Sales Tax. As of July 1, 1993, the state sales and use tax levy was changed from 3% to 4%. The percentage of these revenues distributed to municipalities change over time and presently it is 29.5%.

**TABLE 3**

	A 2Q06	B 2Q07	C 1Q08	D 2Q08	PERCENTAGE CHANGE A TO D	PERCENTAGE CHANGE B TO D	PERCENTAGE CHANGE C TO D
<b>UTILITIES</b>							
Residential Electric Hookups - Active Meters	13,064	13,262	13,465	13,470	3.11	1.57	0.04
Commercial Electric Hookups - Active Meters	2,125	2,164	2,217	2,224	4.66	2.77	0.33
Industrial Electric Hookups - Active Meters	21	21	21	21	0.00	0.00	0.00
Residential Gas Hookups - Active Meters	9,929	N/A	N/A	N/A	N/A	N/A	N/A
Commercial Gas Hookups - Active Meters	1,098	N/A	N/A	N/A	N/A	N/A	N/A
Metered Taps - Water (a)	N/A	N/A	8,551	8,559	N/A	N/A	0.09
<b>EDUCATION</b>							
School Enrollments							
District #1	3,466	3,426	3,502	3,473	1.37	1.37	-0.83
Private Schools	68	71	93	93	36.76	30.99	0.00
Home School	104	124	129	129	24.04	4.03	0.00
Average Total School Enrollment	3,638	3,497	3,703	3,674	0.99	5.06	-0.78
University of Wyoming (Headcount) (b)	2,978	2,984	1,154	N/A	N/A	N/A	N/A
University of Wyoming (FTE) (b)	1,095	1,087	8,300	N/A	N/A	N/A	N/A
LCCC - Albany Co. Campus (FTE) (b)	76	74	604	68	-10.53	-8.11	-88.74
LCCC - Albany Co. Campus (Headcount)	332	195	1,154	238	-28.31	22.05	-79.38
Wyoming Technical Institute	1,947	1,353	1,370	863	-55.68	-36.22	-37.01

Note: Figures reported are an average for the three months.

N/A indicates the information was not available.

(a) Metered water taps are billed quarterly. Figures reported are total number of taps billed per quarter.

(b) University of Wyoming figures are for the main campus only.

**TABLE 4**

	JAN	FEB	MAR	APR	MAY	JUN	JUL	AUG	SEP	OCT	NOV	DEC	AVG	YEAR
<b>EMPLOYMENT</b>														
Total Civilian Labor Force	18,869	19,061	19,160	18,910	18,884	17,953	17,950	17,551	18,534	19,345	19,459	19,121	18,733	2007
	18,331	18,858	19,116	18,632	18,445	17,956							18,556	2008
Total Employment	18,270	18,538	18,604	18,444	18,409	17,480	17,504	17,129	18,061	18,993	19,040	18,630	18,259	2007
	17,761	18,372	18,577	18,243	17,994	17,458							18,068	2008
Total Unemployment	599	523	556	466	475	473	446	422	473	352	419	491	475	2007
	570	486	539	389	451	498							489	2008
Unemployment Rate	3.2%	2.7%	2.9%	2.5%	2.5%	2.6%	2.5%	2.4%	2.6%	1.8%	2.2%	2.6%	2.5%	2007
	3.1%	2.6%	2.8%	2.1%	2.4%	2.8%							2.6%	2008
Initial Unemployment Claims	27	12	28	15	12	16	8	7	4	15	18	22	15	2007
	29	11	15	21	9	17							17	2008
Help Wanted Ads	74	62	87	111	132	115	111	110	98	72	78	72	93	2007
	73	61	69	59	74	72							68	2008
<b>GENERAL BUSINESS ACTIVITY</b>														
New Car & Truck Sales	176	131	193	151	201	220	226	202	175	183	145	125	177	2007
	179	157	174	189	209	202							185	2008
Enplanements Laramie Reg. Airport	685	685	866	813	737	775	833	811	884	959	942	942	828	2007
	753	828	955	798	809	799							824	2008
Total Taxable Sales (\$)	49,391,427	46,921,723	37,443,945	40,504,762	43,619,332	39,701,015	53,171,740	51,448,780	51,443,089	55,622,242	47,819,997	48,089,908	47,098,163	2007
	44,358,848	47,505,585	40,531,229	40,178,393	44,266,764	46,493,036							43,888,976	2008

**Table 5**

		JAN	FEB	MAR	APR	MAY	JUN	JUL	AUG	SEP	OCT	NOV	DEC	AVG	YEAR
<b>CONSTRUCTION</b>															
Total Building Permits - Albany County	99	99	88	179	160	234	177	141	234	178	126	151	2007		
	109	89	120	143	196							134	2008		
Sing. Fam. Bldg. Perm. - Laramie	6	8	10	16	8	14	8	13	9	8	113	19	2007		
	4	2	9	17	6	11						8	2008		
Rural Bldg. Perm. - Albany County	7	6	7	3	20	14	15	24	9	7	9	12	2007		
	2	5	6	9	18	11						9	2008		
Value of Authorized Construction	2,800,940	11,501,696	33,649,814	3,062,521	10,961,882	7,129,463	4,033,433	8,542,250	7,134,699	8,095,817	4,410,994	8,876,285	2007		
	31,146,554	41,639,923	6,349,906	5,494,274	3,173,781	5,247,250						15,508,615	2008		
Business Construction	687,219	6,500,000	29,886,652	0	5,579,244	656,000	1,604,659	0	5,348,635	310,550	2,905,910	804,768	2007		
	25,938,460	0	2,299,800	712,260	265,000	0						4,523,636	2008		
Residential Construction	180,000	917,783	1,198,100	1,761,271	2,199,052	1,767,448	1,102,417	885,876	1,932,902	1,201,192	1,020,238	1,365,223	2007		
	915,164	182,960	1,594,924	3,095,636	714,956	1,452,672						1,326,052	2008		
<b>UTILITIES</b>															
Power Sales Commercial Active Meters	2,139	2,152	2,153	2,157	2,166	2,174	2,187	2,184	2,186	2,197	2,199	2,172	2007		
	2,219	2,217	2,214	2,219	2,222	2,231						2,220	2008		
Gas Consumption Residential Active Meters	n/a	n/a	n/a	n/a	n/a	n/a	9,942	n/a	n/a	n/a	n/a	9,942	2007		
	n/a	n/a	n/a	n/a	n/a	n/a						n/a	2008		
<b>TAXES</b>															
Total Sales and Use Tax Collections	2,700,554	2,553,556	1,978,038	2,153,587	2,368,543	2,955,752	2,859,521	2,861,576	3,108,697	2,622,622	2,638,182	2,576,698	2007		
	2,385,929	2,591,215	2,150,355	2,151,459	2,396,391	2,529,404						2,367,459	2008		
Wholesale and Retail Sales and Use Tax Collections	1,332,192	1,262,747	1,033,501	927,273	1,175,563	1,693,338	1,401,699	1,257,413	1,480,241	1,203,881	1,229,975	1,240,153	2007		
	1,259,524	1,300,929	1,132,686	1,083,329	1,232,785	1,154,310						1,193,927	2008		
1% Sales and Use Tax Receipts	439,235	414,538	319,760	350,369	381,514	477,038	459,809	458,326	500,117	422,095	424,794	415,827	2007		
	387,483	418,950	349,207	345,679	386,562	408,825						382,784	2008		
Lodging Tax Receipts	35,820	37,704	31,538	25,566	49,348	59,906	68,502	74,843	73,991	56,093	55,939	50,602	2007		
	31,192	44,186	28,183	49,105	40,506	45,914						39,848	2008		

## LARAMIE/ALBANY COUNTY PROFILE 2008

ITEMS	MOST RECENT PERIOD		PREVIOUS PERIOD		% CHANGE IN VALUE
	YEAR	VALUE	YEAR	VALUE	
<b>Demography</b>					
Total Population <sup>1</sup>	2007	32,227	2006	32,497	-0.83%
Total Male Population	2007	16,715	2006	17,014	-1.76%
Total Female Population	2007	15,312	2006	15,483	-1.10%
Population - Under 17 Years Old	2007	5,870	2006	5,884	-0.24%
Population - 65 Years & Older	2007	2,728	2004	2,702	0.96%
Median Age	2007	26.9	2006	26.7	0.75%
% of Population - White Alone (Non-Hispanic)	2007	93.1%	2006	93.4%	-0.32%
% of Population - Native American Alone	2007	1.2%	2006	1.2%	0.00%
% of Population - Hispanic or Latino	2007	7.7%	2006	6.9%	11.59%
% of Households (HH) Headed by Married Couples	2000	42.0%	1990	46.2%	-9.09%
% of HH Headed by Single Female (w/own children <18 yrs.)	2000	7.5%	1990	8.0%	-6.25%
<b>Weather &amp; Geography</b>					
Total Area (sq. miles) <sup>1</sup>	2000	4,273	-	-	
Water Area (sq. miles)	2000	36	-	-	
Mean Elevation (ft.)	2000	7,163	-	-	
Normal Mean Temperature (F) - Laramie <sup>2</sup>	1966-2007	40.4	1971-2000	40.3	0.25%
Average Annual Precipitation (inches) - Laramie <sup>2</sup>	1966-2007	10.7	1971-2000	11.7	-8.78%
Average Wind Speed (mph)	1996-2006	12.4	1992-2002	12.2	1.64%
<b>Crime &amp; Law Enforcement</b>					
Crimes <sup>3</sup>	2007	1,056	2006	1,102	-4.17%
Crimes per 100,000 Persons	2007	3,471	2006	3,528	-1.62%
Murders per 100,000 Persons	2007	0.0	2006	9.4	-100.00%
Rapes per 100,000 Persons	2007	3.0	2006	3.1	-3.96%
Robberies per 100,000 Persons	2007	15.2	2006	3.1	386.62%
Aggravated Assaults per 100,000 Persons	2007	51.7	2006	100.0	-48.28%
Burglaries per 100,000 Persons	2007	292.1	2006	468.5	-37.66%
Larcenies & Thefts per 100,000 Persons	2007	2637.9	2006	2661.3	-0.88%
Motor Vehicle Thefts per 100,000 Persons	2007	213.0	2006	196.8	8.24%
<b>Education</b>					
% of Pop. (25 yrs. & older) with High School Degree	2000	93.5%	1990	89.3%	4.70%
% of Pop. (25 yrs. & older) with Bachelor's Degree	2000	44.1%	1990	38.5%	14.55%
ACT Average Composite Score (range 1-36)	2006-07	22.6	2005-06	22.3	1.35%
Spring Semester Enrollment Albany County School District	2008	3,473	2007	3,426	1.37%
Pupil -Teacher Ratio in Public Schools <sup>4</sup>	2006-07	11.61	2005-06	11.09	4.69%
Public High School Graduation Rate <sup>5</sup>	2006-07	85.4%	2005-06	84.0%	1.64%
Expenditures Per Pupil in Public Schools (\$)	2006-07	\$11,268	2005-06	\$10,258	9.85%

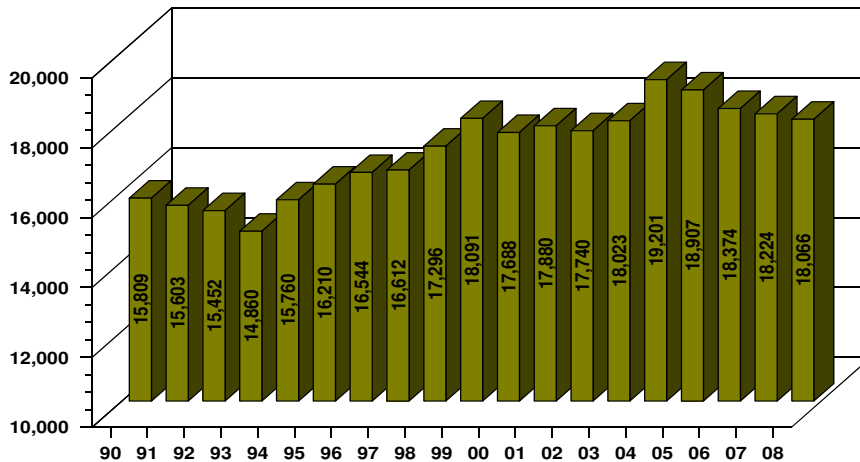
Total School Enrollments Spring Semester	2008	3,674	2007	3,626	1.32%
% of Students in Private Schools	2006	1.9%	2005	2.8%	-32.14%
% of Students Home-Schooled	2006	3.4%	2005	2.8%	21.43%
Spring Semester Full-Time Equivalent (FTE) Enrollment at the University of Wyoming <sup>6</sup>	2007	8,215	2006	8,217	-0.02%
Average Student Age at UW (Spring Semester)	2006	27.7	2005	27.7	0.00%
4 -Year Graduation Rate at UW	2001	26.2%	2000	25.7%	1.95%
Average Faculty Salary at UW (in thousands)	2007-08	\$72.2	2006-07	\$68.3	5.72%
Spring Semester Full-time Equivalent (FTE) Enrollment at Laramie County Community College (Albany County Campus) <sup>7</sup>	2008	604	2007	578	4.50%
<b>Housing</b>					
Average Rent for 2-3 Bedroom House (\$) <sup>8</sup>	4Q07	\$837	4Q06	\$834	0.36%
Average Rent for 2 Bedroom Apartment (\$)	4Q07	\$568	4Q06	\$602	-5.65%
Average Rent for 2-3 Bedroom Mobile Home (\$)	4Q07	\$523	4Q06	\$550	-4.91%
Rental Vacancy Rate <sup>1</sup>	4Q07	3.07%	4Q06	4.77%	-35.6%
<b>Albany County's Economy</b>					
Median Household Income (11)	2005	\$34,901	2004	\$34,627	0.8%
Per Capita Personal Income (\$) <sup>9</sup>	2006	\$28,858	2005	\$27,607	4.53%
<b>Employment &amp; Labor</b>					
Average Annual Pay (\$) <sup>10</sup>	2007	32,354	2006	30,451	6.25%
Total Non-farm Jobs <sup>9</sup>	2006	20,894	2005	20,815	0.38%
% of Jobs in Mining	2006	n/a	2005	0.2%	n/a
% of Jobs in Government	2006	34.8%	2005	35.2%	-0.94%
% of Jobs in Construction	2006	5.5%	2005	5.1%	8.35%
% of Jobs in Manufacturing	2006	3.3%	2005	3.0%	8.68%
% of Jobs in Leisure & Hospitality	2006	10.1%	2005	10.2%	-0.94%
% of Jobs in Professional & Business Services	2006	6.6%	2005	6.4%	4.21%

Sources:

- <sup>1</sup> U.S. Census Bureau
- <sup>2</sup> Western Regional Climate Center
- <sup>3</sup> Wyoming Department of Criminal Investigation
- <sup>4</sup> Albany County School District
- <sup>5</sup> Wyoming Department of Education
- <sup>6</sup> Office of Institutional Analysis, University of Wyoming
- <sup>7</sup> Laramie County Community College
- <sup>8</sup> State of Wyoming, Dept. of Admin. & Info., Economic Analysis Division
- <sup>9</sup> U.S. Commerce Department, Bureau of Economic Analysis
- <sup>10</sup> U.S. Department of Labor, Bureau of Labor Statistics
- <sup>11</sup> US Census Bureau - Small Area Income & Poverty Estimates

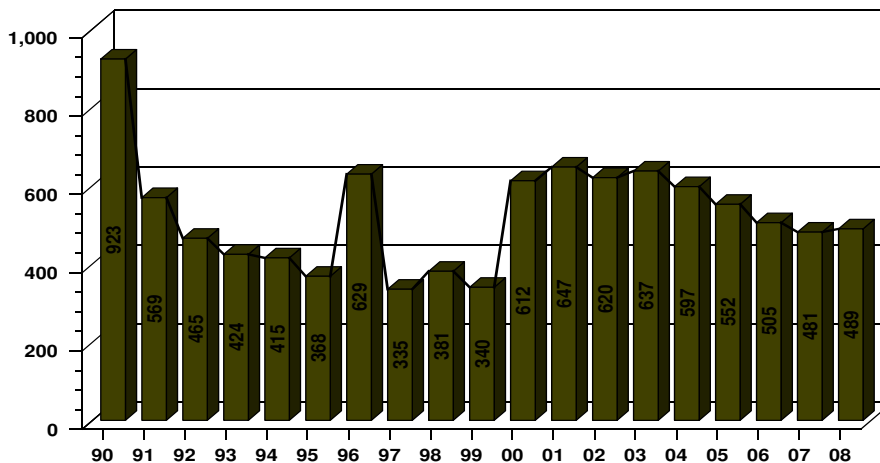
### EMPLOYMENT, ALBANY COUNTY

MONTHLY AVERAGE  
1990 - 2008



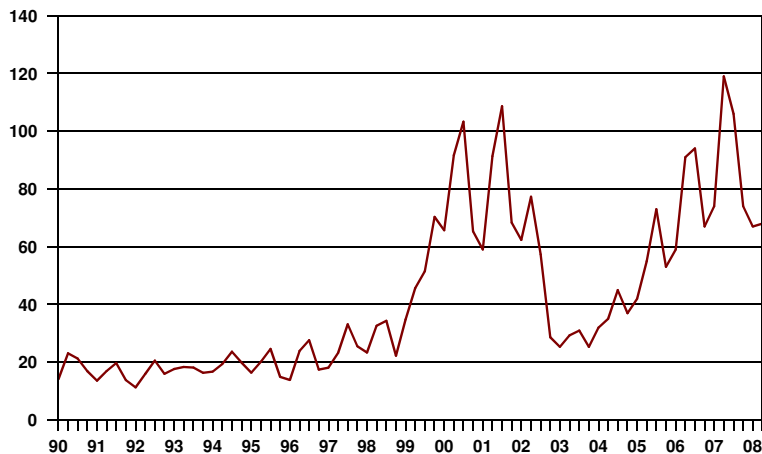
### UNEMPLOYMENT, ALBANY COUNTY

MONTHLY AVERAGE  
1990 - 2008



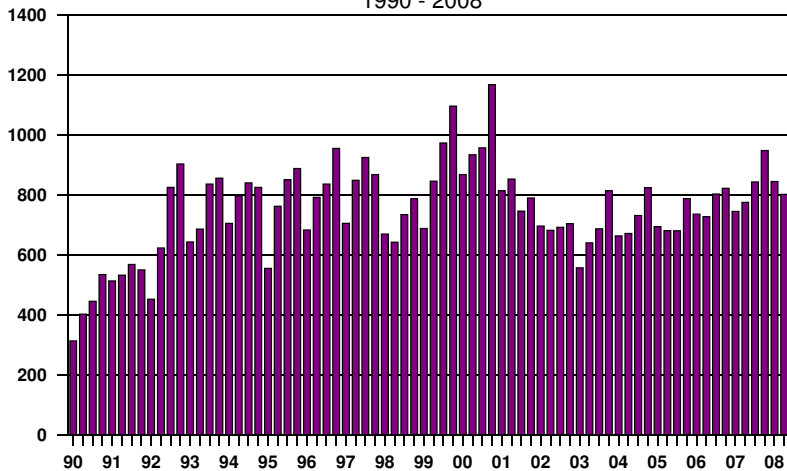
### HELP - WANTED ADS, LARAMIE

QUARTERLY AVERAGES  
1990 - 2008



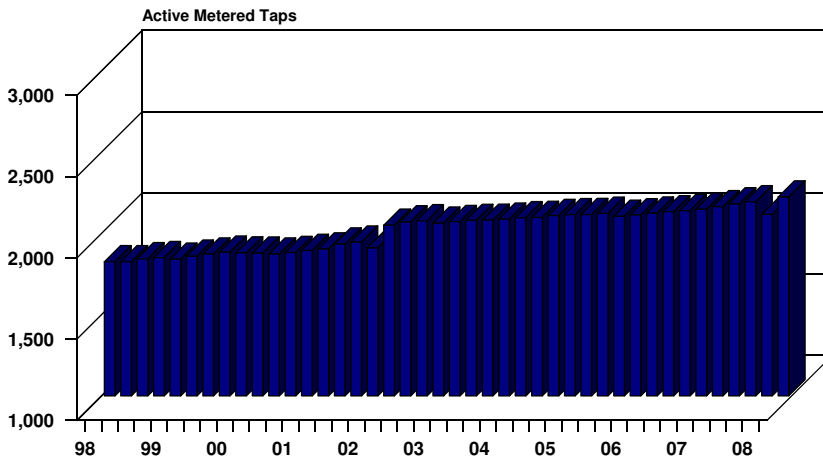
### ENPLANEMENTS, LARAMIE AIRPORT

QUARTERLY AVERAGE  
1990 - 2008



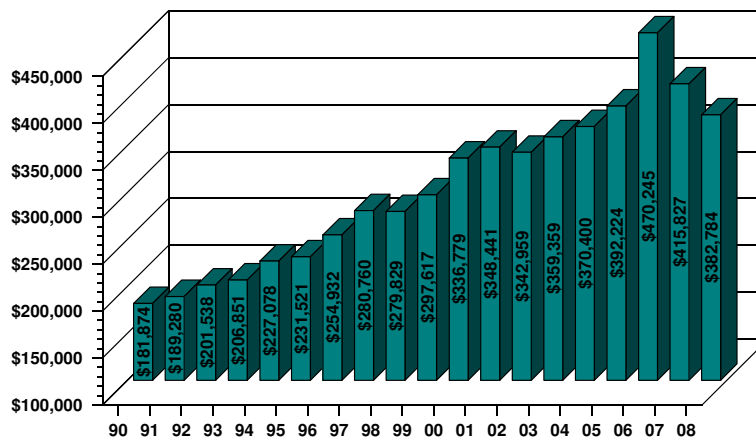
### COMMERCIAL ELECTRIC POWER, LARAMIE

QUARTERLY AVERAGES  
1998 - 2008



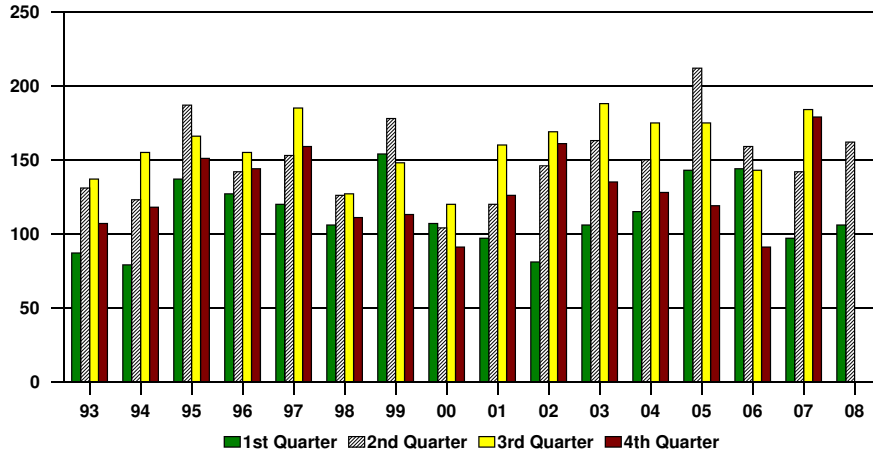
### 1% OPTIONAL SALES AND USE TAX DISTRIBUTIONS ALBANY COUNTY

MONTHLY AVERAGE  
1990 - 2008



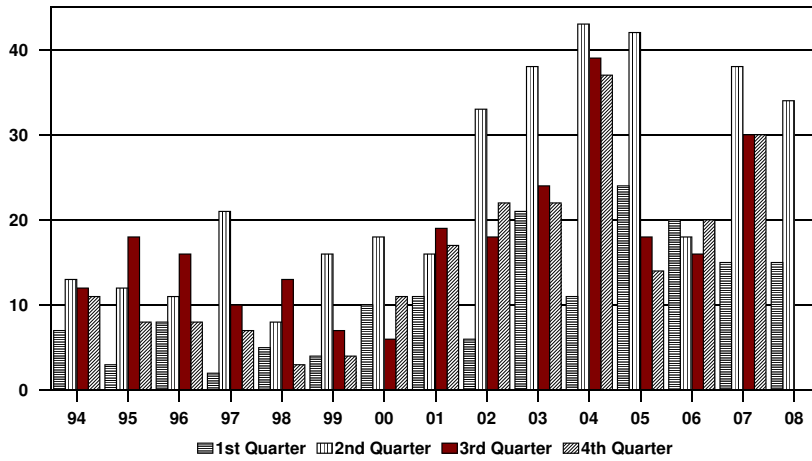
### TOTAL BUILDING PERMITS, LARAMIE

QUARTERLY AVERAGES  
1993 - 2008



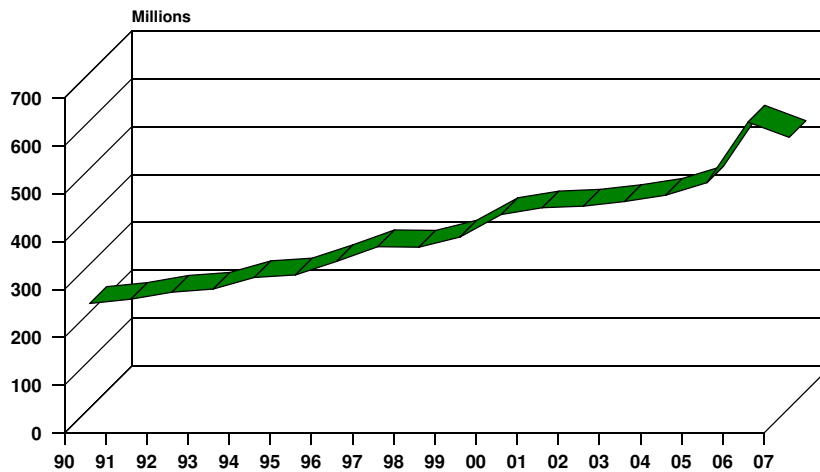
### SINGLE-FAMILY BUILDING PERMITS, LARAMIE

QUARTERLY TOTALS  
1994 - 2008



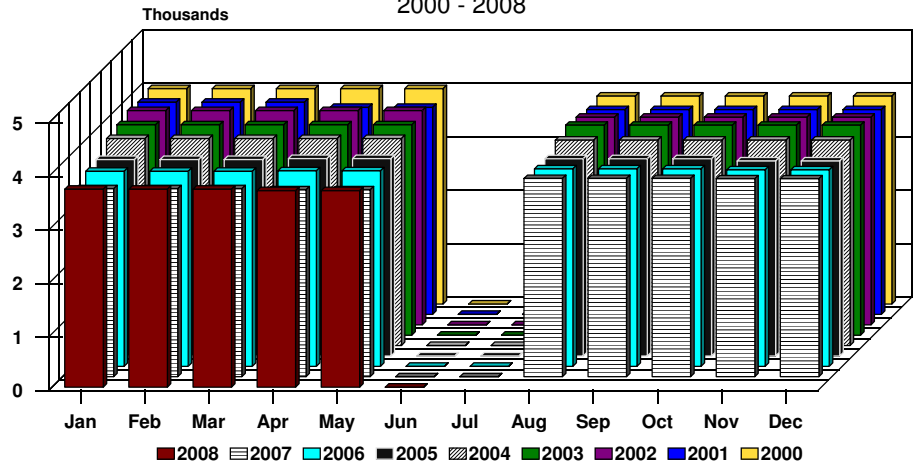
### TOTAL TAXABLE SALES, ALBANY COUNTY

YEARLY TOTALS  
1990 - 2007



# ALBANY COUNTY SCHOOLS, TOTAL ENROLLMENT

MONTHLY TOTALS  
2000 - 2008



## DATA SOURCES

1. Automobile Registrations:  
Albany County Clerk
  2. Construction, Permits, Valuation, Residential:  
Laramie City Engineering Department
  3. Employment:  
Wyoming Department of Employment
  4. Help-Wanted Index:  
Wyoming Center for Business & Economic Analysis, Inc.
  5. Sales and Use Tax Collections:  
Wyoming Department of Revenue and Taxation  
Department of Administration & Information
  6. Utilities:  
Electrical - Pacific Power  
Natural Gas - Source Gas
  7. Water Usage - Metered Taps:  
Laramie City Building Department
  8. Enplanements:  
Laramie Regional Airport
  9. Educational Data:  
Albany County School District #1  
St. Laurence Private School  
University Of Wyoming  
Laramie County Community College  
Wyoming Technical Institute
  10. Rural Building Permits:  
Albany County Planning Office
- 

## SPONSORS

We wish to acknowledge financial support from the following:

City of Laramie  
Laramie Economic Development Corporation  
Laramie Area Chamber of Commerce  
1st Interstate Bank of Laramie  
1st National Bank of Laramie