

# **Economic Indicators for Greater Cheyenne**

Wyoming Center for Business & Economic Analysis, Inc.  
1720 Carey Ave., Suite 520  
Cheyenne, WY 82001  
(307) 632-1347

Volume XXVI, Number 2  
June 2010



## TABLE OF CONTENTS

|                                       |    |
|---------------------------------------|----|
| FRONT MATTER                          |    |
| Preface .....                         | ii |
| ECONOMIC ANALYSIS                     |    |
| Economic Indicators Analysis .....    | 1  |
| Data Tables .....                     | 3  |
| Cheyenne/Laramie County Profile ..... | 13 |
| Economic Indicator Graphs.....        | 15 |
| Data Sources.....                     | 22 |

### COMMUNICATIONS

Data Center Phone: (307) 632-1347  
Data Center FAX: (307) 632-1368  
Editor e-mail: [rto@wyomingeconomicdata.com](mailto:rto@wyomingeconomicdata.com)  
Web Site: [www.wyomingeconomicdata.com](http://www.wyomingeconomicdata.com)  
Mailing Address: Wyoming Center for Business &  
Economic Analysis, Inc.  
1720 Carey Ave., Suite 520  
Cheyenne, WY 82001

|                          |                        |
|--------------------------|------------------------|
| Editor .....             | R.T. O'Gara            |
| Research Assistance..... | Cynthia Branch         |
| Typography .....         | Stacy L. Shultz-Bisset |
| Printing .....           | CopyCo                 |

One free copy of this report will be provided to subscribers. Multiple copies will be provided for a nominal fee. Please see the last page for subscription information.

The articles appearing in this publication represent the opinions of the authors and do not necessarily reflect the views of funding agencies and organizations. Duplication or quotation of material in this publication is welcomed, but it is requested that the Center be credited.

## **NOTICE**

**Due to funding constraints, this will be the last issue of the *Economic Indicators* that will be printed in hard copy.**

**Future issues will be available as a pdf document only and will be posted to the WCBEA's website ([www.wyomingeconomicdata.com](http://www.wyomingeconomicdata.com)).**

THE CENTER'S STAFF SINCERELY APPRECIATES THE CONTINUING  
AND PAST COOPERATION OF THE DATA SOURCES LISTED IN THE BIBLIOGRAPHY.

# ECONOMIC INDICATORS

## ANALYSIS

Labor market data for first quarter 2010 sent a strong message that unemployment in Laramie County appeared to have peaked during fourth quarter 2009 and that it began to head down during the first quarter of 2010. The number of unemployed individuals stood at 3,915 in January and had fallen to 3,146 by the end of April, a decline of almost 20 percent. Initial unemployment claims followed this same path and just released April data had this series dropping again. Initial claims fell from a high of 177 in January to 91 in April, a decline of 49 percent. Thus there has been a consecutive 4 month decline in these critical series.

The area's unemployment rate has fallen by almost two full percentage points between January (9.1%) and April (7.3%). This indicator's average over the first quarter of 2010 was 8.6 percent which was considerably higher than the 2009 mean of 6.5 percent.

The pleasant drop in unemployment numbers during the first quarter of the year was followed by new job growth also. Between January and the end of April, the county saw the creation of 500 new jobs, an increase of 1.2 percent.

While the news on the jobs front was positive last quarter, economic activity in some other sectors remained tied to the continuing effects of the Great Recession. Retail sales, in particular, moved negatively in the first quarter. All three months reported totals that were below the same comparable months of 2009. Table 1 presents this indicator's performance. First quarter sales were down 9.4 percent from first quarter 2009 and 11.9 percent from 4<sup>th</sup> quarter 2009. Given the fact that the vast majority of workers in Laramie County's biggest economic sector (government) will not be getting pay or benefit raises in 2010 and the first half of 2011, suggests there will not be a turnaround in retail sales in the foreseeable future. This potential trend was just further exacerbated by the sharp (10%) correction in stock prices which means the recent year long gains in average household paper wealth were somewhat diminished. If consumers feel less wealthy, they spend less.

Adding more fuel to future lackluster retail spending was weak loan activities by local financial institutions. Sampled bank and credit union loans when combined fell 44.2 million dollars or 4.4 percent from this time one year ago. Firms and individuals only borrow money to spend it and thus the decline in loans means a direct reduction in local economic spending. Intensifying this concern was the fact that deposits at financial institutions soared 174.5 million dollars during the first quarter suggesting that local households and businesses increased their levels of savings and thus reduced spending.

Even though borrowing declined over the first three months of 2010, we did see a burst of spending in the critical residential housing market. Construction permits for new single-family homes rose 132 percent within Cheyenne city limits and 109 percent in rural areas during the first quarter.

The dollar value of this future construction activity also increased, up 130 percent from one year ago. The total value for city residential construction was 11.9 million dollars over the quarter as compared to 5.2 million last year at this time.

A potential concern regarding this resurgence in home building was how much of it was driven by the federal tax credits available to first time and existing home buyers? These programs expired at the end of April which may very well lead to a decline in new home construction in the next few months.

Continuing with what appears to be a "good news" then "bad news" analysis, construction of new commercial and industrial buildings came to a virtual standstill over the first quarter of 2010. There no new permits issued in the city and only one in the county with a grand valuation of \$8,500!

## RESIDENTIAL MARKET

The health of the residential housing market is once again difficult, if not impossible, to accurately assess at this point in time because the Board of Realtors has once again changed its reporting methods and thus the current data is not comparable to the past historical data presented in this report. Statistics presented in the top half of Table 2 and Table 7 then mix reporting methods and users are strongly cautioned about drawing definitive conclusions and assessments.

We will let the residential housing data generally speak for itself, but would call attention to a few hard to accept outcomes. First, the sharp reduction in the supply of homes for sale given the fact the number of homes sold has declined for the past two years is difficult to reconcile. Second, the reported rise in home prices, both city and rural, seems to fly in the face of current economic reality. The short time homes are reported to be on the market is artificially low given the fact that short sales are now impacting that number plus the Board changed its calculation of a few years back that reduced the reported days on the market by at least 30 days.

## **COMMERCIAL PROPERTIES**

By the end of the first quarter, there were no less than 53 retail properties available for sale or lease within the greater Cheyenne area. Total vacant retail square footage was approximately 306,000 which gave a vacancy rate of 7.9 percent for the quarter.

There were no less than 45 warehousing properties available over the quarter with vacant space equal to 389,911 square feet or 8.8 percent of the total warehouse space available.

There were at minimum 86 commercial office properties available for lease or sale by the end of March 2010. These properties contained at least 490,256 square feet of available space. The estimated vacancy rate for office space was computed 22.0 percent.

**TABLE 1**

|  | A<br>1Q08 | B<br>1Q09 | C<br>4Q09 | D<br>1Q10 | PERCENTAGE<br>CHANGE<br>A TO D | PERCENTAGE<br>CHANGE<br>B TO D | PERCENTAGE<br>CHANGE<br>C TO D |
|--|-----------|-----------|-----------|-----------|--------------------------------|--------------------------------|--------------------------------|
| <b>EMPLOYMENT*</b>                       |           |           |           |           |                                |                                |                                |
| Total Civilian Labor Force (LAUS)        | 42,695    | 42,495    | 43,104    | 42,895    | 0.47                           | 0.94                           | -0.48                          |
| Total Employment (LAUS)                  | 40,783    | 39,779    | 39,891    | 39,209    | -3.86                          | -1.43                          | -1.71                          |
| Total Employment (CES )                  | 44,200    | 43,733    | 44,000    | 43,067    | -2.56                          | -1.52                          | -2.12                          |
| Total Unemployment (LAUS)                | 1,912     | 2,716     | 3,213     | 3,686     | 92.75                          | 35.71                          | 14.71                          |
| Unemployment Rate (LAUS)                 | 4.5%      | 6.4%      | 7.5%      | 8.6%      | 91.84                          | 34.43                          | 15.25                          |
| Initial Unemployment Claims              | 89        | 148       | 170       | 136       | 53.76                          | -7.88                          | -19.65                         |
| Help Wanted Ads                          | 120       | 48        | 39        | 35        | -70.57                         | -26.78                         | -9.34                          |
| <b>GENERAL BUSINESS ACTIVITY</b>         |           |           |           |           |                                |                                |                                |
| Auto Registrations New & Used            | 2,875     | 2,473     | 2,384     | 2,484     | -13.61                         | 0.42                           | 4.20                           |
| Enplanements – Cheyenne Airport          | 1,365     | 853       | 845       | 768       | -43.75                         | -10.04                         | -9.19                          |
| Retail Sales (\$000)                     | 236,470   | 237,830   | 244,550   | 215,531   | -8.85                          | -9.38                          | -11.87                         |
| Bankruptcies                             | 16        | 25        | 24        | 26        | 60.42                          | 2.67                           | 6.94                           |
| <b>CONSTRUCTION</b>                      |           |           |           |           |                                |                                |                                |
| Single Fam Bldg Permits – Chey           | 36        | 34        | 45        | 79        | 119.44                         | 132.35                         | 75.56                          |
| Single Fam Bldg Permits – LarCo          | 22        | 11        | 12        | 23        | 4.55                           | 109.09                         | 91.67                          |
| Total Bldg Permits – (Chey) (a)          | 101       | 107       | 110       | 119       | 17.76                          | 11.53                          | 8.81                           |
| Septic Permits – (Rural)                 | 11        | 9         | 6         | 5         | -52.94                         | -42.86                         | -15.79                         |
| Value of Authorized Construction (\$000) | 9,780     | 5,893     | 6,413     | 6,128     | -37.35                         | 3.97                           | -4.45                          |
| Residential (\$000)                      | 2,009     | 1,737     | 2,307     | 3,991     | 98.61                          | 129.79                         | 72.95                          |

Labor statistics are compiled from two major sources: Current Population Survey (CPS) and Current Employment Statistics (CES). Local Area Unemployment Statistics (LAUS) are estimated based on CPS data which is collected through household surveys which individuals are reported as employed, unemployed or not in the labor force. This data includes employment for both agriculture and nonagricultural industries. CES data is based on establishment records compiled through monthly surveys of nonfarm employers. Individuals who worked in more than one establishment, full or part-time, are counted each time their names appear on payrolls.

(a) Data includes building and non-building.

Note: Retail Sales (\$000) are a total of figures for three months.

All other figures reported under Employment and General Business Activity are the monthly average for the quarter.

Single Family Building Permits are a total of the figures for three months.

All other construction figures are the monthly average for the quarter.

**TABLE 1A**

| <b>Housing Profile<br/>Laramie County<br/>2009<br/>Authorized Construction by Permit</b> |            |                         |                                    |                          |                        |
|--|------------|-------------------------|------------------------------------|--------------------------|------------------------|
| <b>MONTH</b>   | <b>SFU</b> | <b>DUPLEX<br/>UNITS</b> | <b>TRI &amp;<br/>FOUR<br/>PLEX</b> | <b>MULTI-<br/>FAMILY</b> | <b>TOTAL<br/>UNITS</b> |
| January  | 15         | 0                       | 0                                  | 0                        | 15                     |
| February   | 14         | 0                       | 0                                  | 0                        | 14                     |
| March  | 16         | 0                       | 0                                  | 0                        | 16                     |
| April  | 9          | 0                       | 0                                  | 0                        | 9                      |
| May  | 19         | 0                       | 0                                  | 0                        | 19                     |
| June   | 38         | 0                       | 0                                  | 0                        | 38                     |
| July   | 21         | 0                       | 0                                  | 0                        | 21                     |
| August   | 17         | 0                       | 0                                  | 0                        | 17                     |
| September  | 23         | 2                       | 0                                  | 216                      | 241                    |
| October  | 20         | 0                       | 0                                  | 0                        | 20                     |
| November   | 13         | 0                       | 0                                  | 0                        | 13                     |
| December   | 24         | 0                       | 0                                  | 0                        | 24                     |
| Year to Date   | 229        | 2                       | 0                                  | 216                      | 447                    |

| <b>Housing Profile<br/>Laramie County<br/>2010<br/>Authorized Construction by Permit</b> |            |                         |                                    |                          |                        |
|--|------------|-------------------------|------------------------------------|--------------------------|------------------------|
| <b>MONTH</b>   | <b>SFU</b> | <b>DUPLEX<br/>UNITS</b> | <b>TRI &amp;<br/>FOUR<br/>PLEX</b> | <b>MULTI-<br/>FAMILY</b> | <b>TOTAL<br/>UNITS</b> |
| January  | 29         | 0                       | 0                                  | 0                        | 29                     |
| February   | 35         | 0                       | 0                                  | 0                        | 35                     |
| March  | 38         | 0                       | 0                                  | 0                        | 38                     |
| April  |            |                         |                                    |                          | 0                      |
| May  |            |                         |                                    |                          | 0                      |
| June   |            |                         |                                    |                          | 0                      |
| July   |            |                         |                                    |                          | 0                      |
| August   |            |                         |                                    |                          | 0                      |
| September  |            |                         |                                    |                          | 0                      |
| October  |            |                         |                                    |                          | 0                      |
| November   |            |                         |                                    |                          | 0                      |
| December   |            |                         |                                    |                          | 0                      |
| Year to Date   | 102        | 0                       | 0                                  | 0                        | 102                    |

**TABLE 2**

|  | A<br>1Q08 | B<br>1Q09 | C<br>4Q09 | D<br>1Q10 | PERCENTAGE<br>CHANGE<br>A TO D | PERCENTAGE<br>CHANGE<br>B TO D | PERCENTAGE<br>CHANGE<br>C TO D |
|--|-----------|-----------|-----------|-----------|--------------------------------|--------------------------------|--------------------------------|
| <b>HOUSING (a) (c)</b>                                     |           |           |           |           |                                |                                |                                |
| City Residential Units For Sale                            | 658       | 477       | 410       | 425       | -35.4                          | -10.8                          | 3.7                            |
| Rural Residential Units For Sale                           | 174       | 191       | 157       | 143       | -17.8                          | -24.8                          | -8.7                           |
| Avg. Total Residentials Sold                               | 102       | 83        | 119       | 81        | -21.2                          | -2.8                           | -32.0                          |
| Avg. City Residential<br>Sale Price (\$)                   | 178,945   | 158,995   | 172,588   | 172,612   | -3.5                           | 8.6                            | 0.01                           |
| Avg. Rural Residential<br>Sale Price (\$)                  | 224,471   | 252,129   | 251,702   | 261,096   | 16.3                           | 3.6                            | 3.7                            |
| Residential Avg. Days<br>on Market (b)                     | 107       | 105       | 78        | 76        | -29.2                          | -27.9                          | -3.0                           |
| <b>VACANCIES (d)</b>                                       |           |           |           |           |                                |                                |                                |
| Furnished Apartments                                       | 3         | 6         | 3         | 3         | -27.2                          | -59.5                          | -3.8                           |
| Unfurnished Apartments                                     | 51        | 71        | 55        | 59        | 16.2                           | -17.1                          | 6.3                            |
| Homes and Duplexes   | 35        | 40        | 33        | 25        | -29.2                          | -37.4                          | -23.9                          |
| Mobile Homes   | 10        | 8         | 6         | 7         | -31.9                          | -11.8                          | 8.1                            |
| Sampled Apartments % Vacancy<br>(Large Complexes Only) (e) | 3.4%      | 4.5%      | 5.3%      | 4.1%      | 20.1                           | -8.8                           | -22.3                          |

(a) Source: Cheyenne Board of Realtors

(b) As of January 2006, average days on the market were calculated by the total days on the market from listing date to the date the property went under contract. Before that time the average was calculated using the total days on the market from the listing date until actual closing.

(c) 2009 housing data is no longer comparable to past statistics because the Cheyenne Board of Realtors no longer reports specific Laramie County housing results.

(d) Source: Wyoming Center for Business & Economic Analysis, Inc.

(e) Average Sample Sizes: 1Q08 822  
1Q09 861  
4Q09 870  
1Q10 872

n/a = not available

Note: Each figure reported is an average of the figures for the three months.

**TABLE 3**

|  | A<br>1Q08 | B<br>1Q09  | C<br>4Q09 | D<br>1Q10 | PERCENTAGE<br>CHANGE<br>A TO D | PERCENTAGE<br>CHANGE<br>B TO D | PERCENTAGE<br>CHANGE<br>C TO D |
|--|-----------|------------|-----------|-----------|--------------------------------|--------------------------------|--------------------------------|
| <b>FINANCIAL ACTIVITY</b>                            |           |            |           |           |                                |                                |                                |
| 4%, 1%, & Lodging<br>Tax Collections (\$000)         | 18,596    | 19,273     | 19,249    | 17,250    | -7.24                          | -10.50                         | -10.38                         |
| Actual Receipts to<br>County Entities (\$000) (a)    | 7,875     | 8,181      | 8,163     | 7,283     | -7.52                          | -10.98                         | -10.78                         |
| 1% Sales &<br>Use Tax Receipts (\$000)               | 3,632     | 3,772      | 3,744     | 3,292     | -9.36                          | -12.73                         | -12.08                         |
| Lodging Tax Receipts                                 | 180,366   | 158,612    | 287,963   | 171,051   | -5.16                          | 7.84                           | -40.60                         |
| 1% Special Purpose<br>Tax Receipts (\$000)           | 3,631     | 3,748      | 3,743     | 3,376     | -7.02                          | -9.93                          | -9.81                          |
| Retail Sales - Eating<br>and Drinking Places (\$000) | 31,931    | 32,998     | 35,348    | 33,877    | 6.10                           | 2.66                           | -4.16                          |
| <b>CREDIT UNION DATA</b>                             |           |            |           |           |                                |                                |                                |
| Deposits (\$000)                                     | 637,940   | 701,605    | 823,068   | 853,838   | 33.84                          | 21.70                          | 3.74                           |
| Total Loans (\$000)                                  | 532,207   | 590,919    | 636,272   | 632,898   | 18.92                          | 7.10                           | -0.53                          |
| Net Income Y-T-D (\$)                                | 2,034,445 | -4,483,553 | 345,215   | 1,443,095 | -29.07                         | -132.19                        | 318.03                         |
| Delinquencies (\$)                                   | 4,954,430 | 4,052,585  | 6,940,982 | 6,265,815 | 26.47                          | 54.61                          | -9.73                          |
| Memberships  | 88,230    | 91,710     | 94,363    | 94,871    | 7.53                           | 3.45                           | 0.54                           |
| <b>BANKING DATA</b>                                  |           |            |           |           |                                |                                |                                |
| Deposits (\$000)                                     | 605,023   | 606,240    | 670,301   | 628,475   | 3.88                           | 3.67                           | -6.24                          |
| Total Loans (\$000)                                  | 408,305   | 411,476    | 313,662   | 325,293   | -20.33                         | -20.94                         | 3.71                           |
| Net Income Y-T-D (\$000)                             | 1,579     | 1,477      | 6,511     | 1,082     | -31.48                         | -26.75                         | -83.38                         |

(a) This total includes the 4% Sales and 4% Use Tax, the 1% Sales and 1% Use Tax, the Out of State Use Tax, and the Out of State Sales Tax. As of July 1, 1993, the state sales and use tax levy was changed from 3% to 4%. The percentage of sales & use tax collections distributed to counties is 31%.

**TABLE 4**

|   | A<br>1Q08 | B<br>1Q09 | C<br>4Q09 | D<br>1Q10 | PERCENTAGE<br>CHANGE<br>A TO D | PERCENTAGE<br>CHANGE<br>B TO D | PERCENTAGE<br>CHANGE<br>C TO D |
|---|-----------|-----------|-----------|-----------|--------------------------------|--------------------------------|--------------------------------|
| <b>UTILITIES</b>                              |           |           |           |           |                                |                                |                                |
| Commercial Electric Power<br>(‘000,000) Kwh   | 48        | 48        | 48        | 48        | 0.71                           | -0.21                          | 0.81                           |
| Residential Gas Usage<br>(‘000) Mcf           | 403       | 338       | 257       | 380       | -5.74                          | 12.24                          | 47.81                          |
| Metered Taps – Water (CBPU)                   | 21,673    | 21,794    | 22,002    | 21,993    | 1.47                           | 0.91                           | -0.04                          |
| Metered Taps – Water<br>(SCW & SD)            | 3,290     | 3,297     | 3,301     | 3,303     | 0.39                           | 0.16                           | 0.05                           |
| <b>HUMAN SERVICES</b>                         |           |           |           |           |                                |                                |                                |
| Total Emergency Room Visits                   | 2,939     | 3,021     | 3,099     | 3,096     | 5.35                           | 2.49                           | -0.10                          |
| Safehouse –<br># of People Sheltered          | 25        | 17        | 28        | 22        | -10.67                         | 34.00                          | -19.28                         |
| Comea Shelter –<br>Nights Lodging             | 1,165     | 1,148     | 1,450     | 1,477     | 26.78                          | 28.70                          | 1.86                           |
| DPASS – AFDC Distributions                    | 106       | 123       | 122       | 122       | 14.78                          | -1.35                          | -0.54                          |
| <b>SCHOOL ENROLLMENTS</b>                     |           |           |           |           |                                |                                |                                |
| Laramie County District #1                    | 12,263    | 12,537    | 12,693    | 13,204    | 7.67                           | 5.32                           | 4.03                           |
| Laramie County District #2                    | 905       | 837       | 877       | 864       | -4.53                          | 3.23                           | -1.44                          |
| Private Schools                               | 380       | 432       | 474       | 474       | 24.74                          | 9.72                           | 0.00                           |
| Home Schooling                                | 354       | 406       | 347       | 347       | -1.98                          | -14.53                         | 0.00                           |
| Total School Enrollment                       | 13,902    | 14,212    | 14,391    | 14,889    | 7.10                           | 4.76                           | 3.46                           |
| LCCC Enrollment – FTE<br>(Lar Co Sites)       | 2,765     | 2,830     | 3,038     | N/A       | N/A                            | N/A                            | N/A                            |
| LCCC Enrollment – Headcount<br>(Lar Co Sites) | 4,755     | 4,817     | 5,269     | N/A       | N/A                            | N/A                            | N/A                            |

CPBU – Cheyenne Board of Public Utilities

SCW&SD – South Cheyenne Water & Sewer District

Note: Each figure reported is an average of the figures for three months.

**TABLE 5**

|                              | A<br>1Q08 | B<br>1Q09 | C<br>4Q09 | D<br>1Q10 | PERCENTAGE<br>CHANGE<br>A TO D | PERCENTAGE<br>CHANGE<br>B TO D | PERCENTAGE<br>CHANGE<br>C TO D |
|------------------------------|-----------|-----------|-----------|-----------|--------------------------------|--------------------------------|--------------------------------|
| <b>TOURISM</b>               |           |           |           |           |                                |                                |                                |
| Available Rooms              | 64,170    | 67,770    | 69,276    | 67,770    | 5.61                           | 0.00                           | -2.17                          |
| Nights Occupied              | 31,642    | 30,426    | 32,309    | 30,800    | -2.66                          | 1.23                           | -4.67                          |
| Occupancy Rate               | 49.5%     | 44.9%     | 46.6%     | 45.5%     | -8.01                          | 1.49                           | -2.29                          |
| Average Room Rate (\$)       | \$64.95   | \$65.53   | \$65.66   | \$65.00   | 0.09                           | -0.80                          | -1.00                          |
| CACVB Visitor Walk-in Count  | 1,078     | 1,350     | 2,563     | 1,541     | 42.92                          | 14.12                          | -39.89                         |
| Trolley Ridership            | 96        | 190       | 1,852     | 220       | 129.17                         | 15.79                          | -88.12                         |
| Pine Bluffs Info Center      | closed    | closed    | 4,508     | 2,592     | N/A                            | N/A                            | -42.51                         |
| I-25 State Visitor Center    | 1,978     | 2,209     | 2,439     | 1,720     | -13.06                         | -22.15                         | -29.50                         |
| Old West Museum Paid Visitor | 1,371     | 958       | 1,296     | 619       | -54.85                         | -35.36                         | -52.23                         |

**TABLE 6**

|                                   | JAN        | FEB        | MAR        | APR        | MAY        | JUN        | JUL        | AUG        | SEP        | OCT        | NOV        | DEC        | AVG        | YEAR |
|-----------------------------------|------------|------------|------------|------------|------------|------------|------------|------------|------------|------------|------------|------------|------------|------|
| <b>EMPLOYMENT*</b>                |            |            |            |            |            |            |            |            |            |            |            |            |            |      |
| Total Civilian Labor Force (LAUS) | 42,314     | 42,496     | 42,675     | 42,225     | 42,271     | 42,994     | 43,958     | 43,465     | 42,747     | 43,143     | 43,203     | 42,966     | 42,871     | 2009 |
|                                   | 42,963     | 42,794     | 42,928     |            |            |            |            |            |            |            |            |            | 42,895     | 2010 |
| Total Employment (LAUS)           | 39,459     | 39,836     | 40,042     | 40,061     | 39,827     | 40,206     | 41,153     | 40,644     | 39,888     | 40,001     | 40,111     | 39,560     | 40,066     | 2009 |
|                                   | 39,048     | 39,143     | 39,436     |            |            |            |            |            |            |            |            |            | 39,209     | 2010 |
| Total Employment (CES)            | 43,600     | 43,600     | 44,000     | 43,600     | 44,800     | 45,500     | 45,200     | 44,700     | 44,500     | 44,100     | 44,000     | 43,900     | 44,292     | 2009 |
|                                   | 42,800     | 43,100     | 43,300     |            |            |            |            |            |            |            |            |            | 43,067     | 2010 |
| Total Unemployment (LAUS)         | 2,855      | 2,660      | 2,633      | 2,164      | 2,444      | 2,788      | 2,805      | 2,821      | 2,859      | 3,142      | 3,092      | 3,406      | 2,806      | 2009 |
|                                   | 3,915      | 3,651      | 3,492      |            |            |            |            |            |            |            |            |            | 3,686      | 2010 |
| Unemployment Rate (LAUS)          | 6.7%       | 6.3%       | 6.2%       | 5.1%       | 5.8%       | 6.5%       | 6.4%       | 6.5%       | 6.7%       | 7.3%       | 7.2%       | 7.9%       | 6.5%       | 2009 |
|                                   | 9.1%       | 8.5%       | 8.1%       |            |            |            |            |            |            |            |            |            | 8.6%       | 2010 |
| Initial Unemployment Claims       | 205        | 118        | 121        | 82         | 112        | 128        | 129        | 67         | 72         | 174        | 111        | 224        | 129        | 2009 |
|                                   | 177        | 121        | 111        |            |            |            |            |            |            |            |            |            | 136        | 2010 |
| Help Wanted Ads                   | 45         | 46         | 54         | 52         | 65         | 52         | 33         | 52         | 47         | 46         | 32         | 39         | 47         | 2009 |
|                                   | 28         | 39         | 39         |            |            |            |            |            |            |            |            |            | 35         | 2010 |
| <b>GENERAL BUSINESS ACTIVITY</b>  |            |            |            |            |            |            |            |            |            |            |            |            |            |      |
| Auto Registrations                | 2,207      | 2,424      | 2,789      | 2,725      | 2,794      | 3,131      | 2,988      | 3,010      | 3,226      | 2,408      | 2,418      | 2,325      | 2,704      | 2009 |
|                                   | 2,079      | 2,413      | 2,959      |            |            |            |            |            |            |            |            |            | 2,484      | 2010 |
| Enplanements – Chey. Airport      | 915        | 795        | 850        | 927        | 988        | 855        | 1,019      | 1,047      | 1,223      | 889        | 799        | 848        | 930        | 2009 |
|                                   | 857        | 734        | 712        |            |            |            |            |            |            |            |            |            | 768        | 2010 |
| Retail Sales (\$)                 | 81,260,900 | 85,930,600 | 70,638,400 | 65,314,000 | 69,633,400 | 70,526,600 | 86,983,400 | 75,335,400 | 81,938,500 | 75,686,900 | 84,638,000 | 84,225,500 | 77,675,967 | 2009 |
|                                   | 70,412,400 | 77,384,600 | 67,734,100 |            |            |            |            |            |            |            |            |            | 71,843,700 | 2010 |
| Bankruptcies                      | 19         | 22         | 34         | 31         | 36         | 40         | 21         | 32         | 30         | 29         | 16         | 27         | 28         | 2009 |
|                                   | 17         | 27         | 33         |            |            |            |            |            |            |            |            |            | 26         | 2010 |

\* Labor statistics are compiled from two major sources: Current Population Survey (CPS) and Current Employment Statistics (CES). Local Area Unemployment Statistics (LAUS) are estimated based on CPS data which is collected through household surveys which individuals are reported as employed, unemployed or not in the labor force. This data includes employment for both agriculture and nonagricultural industries. CES data is based on establishment records compiled through monthly surveys of nonfarm employers. Individuals who worked in more than one establishment, full or part-time, are counted each time their names appear on payrolls.

**TABLE 7**

|  | JAN       | FEB       | MAR       | APR       | MAY       | JUN       | JUL       | AUG       | SEP        | OCT       | NOV       | DEC       | AVG       | YEAR |
|--|-----------|-----------|-----------|-----------|-----------|-----------|-----------|-----------|------------|-----------|-----------|-----------|-----------|------|
| <b>HOUSING</b>                               |           |           |           |           |           |           |           |           |            |           |           |           |           |      |
| Total Residential Units for Sale             | 726       | 750       | 769       | 760       | 728       | 759       | 766       | 736       | 703        | 663       | 647       | 625       | 719       | 2009 |
|  | 509       | 571       | 625       |           |           |           |           |           |            |           |           |           | 568       | 2010 |
| Total Residential Units Sold                 | 67        | 74        | 108       | 106       | 113       | 155       | 161       | 120       | 131        | 134       | 133       | 89        | 116       | 2009 |
|  | 48        | 95        | 99        |           |           |           |           |           |            |           |           |           | 81        | 2010 |
| Average Residential Sold Price (city)        | 148,290   | 159,875   | 168,819   | 169,262   | 169,084   | 169,480   | 172,689   | 171,817   | 171,768    | 172,956   | 172,597   | 172,211   | 168,237   | 2009 |
|  | 159,157   | 192,030   | 166,649   |           |           |           |           |           |            |           |           |           | 172,612   | 2010 |
| Furnished Apartments                         | 5         | 7         | 6         | 6         | 5         | 2         | 3         | 2         | 1          | 3         | 2         | 3         | 4         | 2009 |
|  | 4         | 2         | 1         |           |           |           |           |           |            |           |           |           | 3         | 2010 |
| Unfurnished Apartments                       | 76        | 73        | 64        | 60        | 58        | 65        | 69        | 52        | 56         | 52        | 53        | 60        | 61        | 2009 |
|  | 60        | 56        | 61        |           |           |           |           |           |            |           |           |           | 59        | 2010 |
| Homes & Duplexes                             | 42        | 45        | 33        | 30        | 27        | 21        | 29        | 32        | 29         | 36        | 34        | 29        | 32        | 2009 |
|  | 29        | 22        | 24        |           |           |           |           |           |            |           |           |           | 25        | 2010 |
| Mobile Homes                                 | 11        | 5         | 7         | 4         | 5         | 3         | 4         | 6         | 7          | 7         | 6         | 6         | 6         | 2009 |
|  | 8         | 7         | 6         |           |           |           |           |           |            |           |           |           | 7         | 2010 |
| Sampled Apartments % Vacant                  | 4.1%      | 4.4%      | 5.0%      | 3.6%      | 2.8%      | 4.2%      | 5.3%      | 4.5%      | 6.1%       | 6.3%      | 5.1%      | 4.4%      | 4.6%      | 2009 |
|  | 4.0%      | 4.4%      | 3.9%      |           |           |           |           |           |            |           |           |           | 4.1%      | 2010 |
| <b>CONSTRUCTION</b>                          |           |           |           |           |           |           |           |           |            |           |           |           |           |      |
| Single Family Bldg. Permits (Cheyenne)       | 11        | 11        | 12        | 6         | 16        | 29        | 15        | 13        | 15         | 15        | 8         | 22        | 14        | 2009 |
|  | 24        | 27        | 28        |           |           |           |           |           |            |           |           |           | 26        | 2010 |
| Single Family Bldg. Permits (Laramie County) | 4         | 3         | 4         | 3         | 3         | 9         | 6         | 4         | 8          | 5         | 5         | 2         | 5         | 2009 |
|  | 5         | 8         | 10        |           |           |           |           |           |            |           |           |           | 8         | 2010 |
| Septic Permits – Rural                       | 12        | 5         | 11        | 8         | 10        | 11        | 13        | 10        | 13         | 7         | 6         | 6         | 9         | 2009 |
|  | 4         | 2         | 10        |           |           |           |           |           |            |           |           |           | 5         | 2010 |
| Total Building Permits                       | 122       | 101       | 98        | 102       | 131       | 152       | 116       | 125       | 126        | 132       | 89        | 108       | 117       | 2009 |
|  | 88        | 117       | 153       |           |           |           |           |           |            |           |           |           | 119       | 2010 |
| Value of Authorized Const (\$000)            | 5,465,622 | 7,114,095 | 5,100,763 | 1,933,045 | 8,125,762 | 6,434,715 | 6,518,073 | 3,420,525 | 52,148,862 | 5,931,856 | 7,705,695 | 5,601,683 | 7,958,391 | 2009 |
|  | 6,487,065 | 6,021,209 | 5,874,732 |           |           |           |           |           |            |           |           |           | 6,127,669 | 2010 |
| Residential (\$000)                          | 1,516,537 | 1,807,564 | 1,885,885 | 1,014,657 | 2,791,287 | 4,341,035 | 2,599,540 | 2,359,017 | 2,840,005  | 2,152,278 | 1,226,998 | 3,543,027 | 2,339,819 | 2009 |
|  | 4,110,572 | 3,554,584 | 4,306,958 |           |           |           |           |           |            |           |           |           | 3,990,705 | 2010 |

Note: Data is not seasonally adjusted. Single family building permits for Cheyenne includes new residences and new townhouses.

**TABLE 8**

|  | JAN    | FEB    | MAR    | APR    | MAY    | JUN    | JUL    | AUG    | SEP    | OCT    | NOV    | DEC    | AVG    | YEAR |
|--|--------|--------|--------|--------|--------|--------|--------|--------|--------|--------|--------|--------|--------|------|
| <b>UTILITIES</b>                           |        |        |        |        |        |        |        |        |        |        |        |        |        |      |
| Commercial Electric Power (Kwh) ('0,000)   | 4,924  | 5,007  | 4,601  | 4,705  | 4,709  | 4,724  | 4,912  | 5,259  | 5,046  | 4,775  | 4,824  | 4,786  | 4,856  | 2009 |
|  | 5,026  | 4,785  | 4,691  |        |        |        |        |        |        |        |        |        | 4,834  | 2010 |
| Residential Gas Usage (Mcf) ('000)         | 3,834  | 3,421  | 2,898  | 2,821  | 1,740  | 973    | 622    | 558    | 589    | 1,597  | 2,567  | 3,545  | 2,097  | 2009 |
|  | 4,228  | 3,728  | 3,439  |        |        |        |        |        |        |        |        |        | 3,799  | 2010 |
| Metered Water Taps (CBPU)                  | 21,790 | 21,779 | 21,813 | 21,849 | 21,864 | 21,971 | 22,021 | 22,001 | 22,051 | 22,028 | 21,993 | 21,984 | 21,929 | 2009 |
|  | 21,959 | 22,001 | 22,018 |        |        |        |        |        |        |        |        |        | 21,993 | 2010 |
| Metered Water Taps (SCW & SD)              | 3,297  | 3,297  | 3,298  | 3,298  | 3,299  | 3,301  | 3,301  | 3,301  | 3,301  | 3,301  | 3,301  | 3,301  | 3,300  | 2009 |
|  | 3,302  | 3,302  | 3,304  |        |        |        |        |        |        |        |        |        | 3,303  | 2010 |
| <b>HUMAN SERVICES</b>                      |        |        |        |        |        |        |        |        |        |        |        |        |        |      |
| Total Emergency Room Visits                | 3,099  | 2,867  | 3,097  | 2,972  | 3,254  | 3,218  | 3,309  | 3,325  | 3,309  | 3,575  | 2,914  | 2,809  | 3,146  | 2009 |
|  | 3,188  | 2,935  | 3,166  |        |        |        |        |        |        |        |        |        | 3,096  | 2010 |
| Safehouse – Number of People Sheltered     | 17     | 14     | 19     | 29     | 26     | 28     | 37     | 28     | 21     | 35     | 22     | 26     | 25     | 2009 |
|  | 27     | 19     | 21     |        |        |        |        |        |        |        |        |        | 22     | 2010 |
| Comea Shelter – Total Nights Lodging       | 1,240  | 1,036  | 1,167  | 1,518  | 1,748  | 1,736  | 1,914  | 1,670  | 1,382  | 1,562  | 1,418  | 1,370  | 1,480  | 2009 |
|  | 1,154  | 1,573  | 1,704  |        |        |        |        |        |        |        |        |        | 1,477  | 2010 |
| <b>SCHOOL ENROLLMENTS</b>                  |        |        |        |        |        |        |        |        |        |        |        |        |        |      |
| Laramie County District #1                 | 12,537 | 12,537 | 12,537 | 12,537 | 12,537 |        |        | 12,693 | 12,693 | 12,693 | 12,693 | 12,693 | 12,615 | 2009 |
|  | 13,204 | 13,204 | 13,204 |        |        |        |        |        |        |        |        |        | 13,204 | 2010 |
| Laramie County District #2                 | 837    | 837    | 837    | 836    | 836    |        |        | 879    | 871    | 878    | 871    | 881    | 856    | 2009 |
|  | 871    | 861    | 860    |        |        |        |        |        |        |        |        |        | 864    | 2010 |
| Total School Enrollment                    | 14,212 | 14,212 | 14,212 | 14,211 | 14,211 |        |        | 14,393 | 14,385 | 14,392 | 14,385 | 14,395 | 14,301 | 2009 |
|  | 14,896 | 14,886 | 14,885 |        |        |        |        |        |        |        |        |        | 14,889 | 2010 |
| LCCC Enrollment – FTE (Lar Co Sites)       | 2,839  | 2,830  | 2,830  | 2,830  | 2,830  | 558    | 558    | 3,038  | 3,038  | 3,038  | 3,038  | 3,038  | 2,539  | 2009 |
|  | N/A    | N/A    | N/A    | N/A    | N/A    |        |        |        |        |        |        |        | n/a    | 2010 |
| LCCC Enrollment – Headcount (Lar Co Sites) | 4,859  | 4,817  | 4,817  | 4,817  | 4,817  | 1,636  | 1,636  | 5,269  | 5,269  | 5,269  | 5,269  | 5,269  | 4,479  | 2009 |
|  | N/A    | N/A    | N/A    | N/A    | N/A    |        |        |        |        |        |        |        | N/A    | 2010 |

Note: Data is not seasonally adjusted.

**TABLE 9**

|  | JAN       | FEB       | MAR       | APR       | MAY       | JUN       | JUL       | AUG       | SEP       | OCT       | NOV       | DEC       | AVG       | YEAR |
|--|-----------|-----------|-----------|-----------|-----------|-----------|-----------|-----------|-----------|-----------|-----------|-----------|-----------|------|
| <b>TAXES</b>                                       |           |           |           |           |           |           |           |           |           |           |           |           |           |      |
| 4%, 1%, & Lodging Tax Collections                  | 6,855,597 | 6,711,504 | 5,706,048 | 5,748,907 | 5,124,251 | 5,562,399 | 6,699,216 | 5,998,337 | 6,649,449 | 5,728,647 | 7,074,880 | 6,445,824 | 6,192,088 | 2009 |
|  | 5,450,422 | 6,323,638 | 5,476,284 |           |           |           |           |           |           |           |           |           | 5,750,115 | 2010 |
| Wholesale and Retail Sales and Use Tax Collections | 3,941,069 | 3,717,995 | 2,901,712 | 2,904,282 | 2,534,431 | 2,598,152 | 3,446,636 | 2,824,497 | 2,696,615 | 2,727,567 | 3,537,237 | 3,314,813 | 3,095,417 | 2009 |
|  | 2,762,476 | 3,276,317 | 2,645,930 |           |           |           |           |           |           |           |           |           | 2,894,908 | 2010 |
| Actual Receipts to County Entities                 | 2,922,873 | 2,849,929 | 2,408,540 | 2,435,155 | 2,228,917 | 2,315,991 | 2,913,599 | 2,522,379 | 2,757,181 | 2,413,832 | 3,013,805 | 2,735,114 | 2,626,443 | 2009 |
|  | 2,332,458 | 2,628,031 | 2,322,624 |           |           |           |           |           |           |           |           |           | 2,427,704 | 2010 |
| 1% Sales and Use Tax Receipts                      | 1,342,912 | 1,316,118 | 1,113,454 | 1,123,485 | 1,022,888 | 1,064,308 | 1,376,508 | 1,160,294 | 1,264,933 | 1,108,263 | 1,382,362 | 1,253,673 | 1,210,767 | 2009 |
|  | 1,068,117 | 1,156,859 | 1,067,172 |           |           |           |           |           |           |           |           |           | 1,097,383 | 2010 |
| Lodging Tax Receipts                               | 45,343    | 51,530    | 61,739    | 65,863    | (57,279)  | 166,826   | 95,078    | 110,222   | 231,200   | 109,023   | 86,125    | 92,815    | 88,207    | 2009 |
|  | 37,933    | 57,561    | 75,556    |           |           |           |           |           |           |           |           |           | 57,017    | 2010 |
| <b>TOURISM</b>                                     |           |           |           |           |           |           |           |           |           |           |           |           |           |      |
| Available Rooms                                    | 70,029    | 63,252    | 70,029    | 67,770    | 70,029    | 67,770    | 70,029    | 70,029    | 67,770    | 70,029    | 67,770    | 70,029    | 68,711    | 2009 |
|  | 70,029    | 63,252    | 70,029    |           |           |           |           |           |           |           |           |           | 67,770    | 2010 |
| Nights Occupied                                    | 31,597    | 28,158    | 31,523    | 35,659    | 41,557    | 47,307    | 53,338    | 48,815    | 46,233    | 42,648    | 28,591    | 25,688    | 38,426    | 2009 |
|  | 27,896    | 30,677    | 33,828    |           |           |           |           |           |           |           |           |           | 30,800    | 2010 |
| Occupancy Percentage                               | 45.1%     | 44.5%     | 45.0%     | 52.6%     | 59.3%     | 69.8%     | 76.2%     | 69.7%     | 68.2%     | 60.9%     | 42.2%     | 36.7%     | 55.9      | 2009 |
|  | 39.8%     | 48.5%     | 48.3%     |           |           |           |           |           |           |           |           |           | 45.5      | 2010 |
| Average Room Rate (\$)                             | 65.42     | 67.37     | 63.79     | 63.16     | 64.42     | 72.71     | 98.61     | 73.21     | 71.36     | 67.90     | 64.48     | 64.60     | 69.75     | 2009 |
|  | 64.59     | 66.72     | 63.70     |           |           |           |           |           |           |           |           |           | 65.00     | 2010 |
| CACVB Visitor Walk-In Count                        | 1,219     | 1,079     | 1,752     | 1,455     | 5,025     | 7,625     | 14,133    | 8,238     | 5,719     | 2,640     | 2,570     | 2,479     | 4,495     | 2009 |
|  | 1,216     | 1,343     | 2,063     |           |           |           |           |           |           |           |           |           | 1,541     | 2010 |
| Trolley Ridership                                  | 253       | 248       | 69        | 172       | 1,894     | 2,093     | 1,962     | 1,526     | 993       | 1,204     | 83        | 4,270     | 1,231     | 2009 |
|  | 144       | 244       | 272       |           |           |           |           |           |           |           |           |           | 220       | 2010 |
| Pine Bluffs Information Center                     | closed    | closed    | closed    | 3,967     | 8,685     | 13,203    | 16,133    | 13,363    | 9,784     | 6,611     | 3,941     | 2,973     | 8,740     | 2009 |
|  | 2,828     | 1,897     | 3,051     |           |           |           |           |           |           |           |           |           | 2,592     | 2010 |
| Wyoming State Museum                               | 1,393     | 1,529     | 1,441     | 1,405     | 2,495     | 3,153     | 3,692     | 2,458     | 1,360     | 1,676     | 803       | 979       | 1,865     | 2009 |
|  | 1,205     | 1,147     | 1,835     |           |           |           |           |           |           |           |           |           | 1,396     | 2010 |
| I-25 State Visitor Center                          | 2,134     | 1,811     | 2,682     | 3,539     | 7,408     | 11,845    | 17,449    | 11,591    | 8,310     | 3,516     | 2,214     | 1,588     | 6,174     | 2009 |
|  | 1,763     | 1,414     | 1,982     |           |           |           |           |           |           |           |           |           | 1,720     | 2010 |
| Old West Museum                                    | 503       | 571       | 1,799     | 1,241     | 1,853     | 3,556     | 12,653    | 2,665     | 3,002     | 1,977     | 1,115     | 795       | 2,644     | 2009 |
|  | 340       | 392       | 1,125     |           |           |           |           |           |           |           |           |           | 619       | 2010 |

## CHEYENNE/LARAMIE COUNTY PROFILE

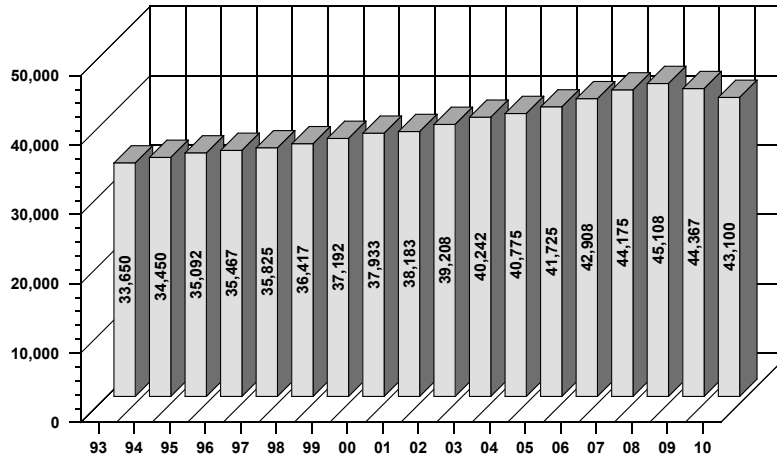
| ITEMS   | MOST RECENT PERIOD |          | PREVIOUS PERIOD |          | % CHANGE IN VALUE |
|---|--------------------|----------|-----------------|----------|-------------------|
|   | YEAR               | VALUE    | YEAR            | VALUE    |                   |
| <b>Demography</b>   |                    |          |                 |          |                   |
| Total Population – Cheyenne <sup>1</sup>                          | 2008               | 56,915   | 2007            | 56,251   | 1.2%              |
| Total Population – Laramie County                                 | 2008               | 87,542   | 2007            | 86,480   | 1.23%             |
| Total Male Population   | 2008               | 43,990   | 2007            | 43,200   | 1.83%             |
| Total Female Population   | 2008               | 43,552   | 2007            | 42,641   | 2.14%             |
| % of Population – Under 20 Years Old                              | 2008               | 28.8%    | 2007            | 27.9%    | 3.19%             |
| % of Population – 65 Years & Older                                | 2008               | 12.0%    | 2007            | 11.8%    | 1.69%             |
| Median Age  | 2008               | 35.8     | 2007            | 36.1     | -0.83%            |
| % of Population – White Alone (Non-Hispanic)                      | 2008               | 85.7%    | 2007            | 81.4%    | 5.28%             |
| % of Population – Native American Alone                           | 2008               | 1.8%     | 2007            | 2.1%     | -14.29%           |
| % of Population – Hispanic or Latino                              | 2008               | 11.7%    | 2007            | 11.3%    | 3.54%             |
| Households – County   | 2008               | 33,025   | 2007            | 33,640   | -1.83%            |
| Average Household Size – County                                   | 2008               | 2.6      | 2007            | 2.5      | 4.00%             |
| Households – City   | 2007               | 22,929   | 2000            | 23,782   | -3.59%            |
| % of Households (HH) Headed by Married Couples                    | 2008               | 47.8%    | 2007            | 50.4%    | -5.16%            |
| % of HH Headed by Single Female (w/own children <18 yrs.)         | 2008               | 11.0%    | 2007            | 11.1%    | -0.90%            |
| <b>Weather &amp; Geography</b>                                    |                    |          |                 |          |                   |
| Total Area (sq. miles) <sup>1</sup>                               | 2000               | 2,688    | -               | -        |                   |
| Total Area (sq. miles) <sup>11</sup> – Cheyenne                   | 2008               | 24.6     | 2007            | 24.4     | 0.99%             |
| Water Area (sq. miles)  | 2000               | 1.6      | -               | -        |                   |
| Mean Elevation (ft.)  | 2000               | 6,100    | -               | -        |                   |
| Normal Mean Temperature (F) – Cheyenne <sup>2</sup>               | 1949-06            | 45.9     | 1971-00         | 44.9     | 2.23%             |
| Average Annual Precipitation (inches) - Cheyenne <sup>2</sup>     | 1949-06            | 14.6     | 1971-00         | 15.5     | -5.50%            |
| Average Wind Speed (mph)  | 1996-06            | 12.4     | 1992-02         | 12.6     | -1.59%            |
| <b>Crime &amp; Law Enforcement</b>                                |                    |          |                 |          |                   |
| Crimes <sup>3</sup>   | 2008               | 3,327    | 2007            | 3,233    | 2.91%             |
| Crimes per 100,000 Persons  | 2008               | 2,912.5  | 2007            | 2,795.9  | 4.17%             |
| Homicides per 100,000 Persons                                     | 2008               | 2.6      | 2007            | 1.7      | 54.49%            |
| Rapes per 100,000 Persons   | 2008               | 25.4     | 2007            | 29.4     | -13.65%           |
| Robberies per 100,000 Persons                                     | 2008               | 26.3     | 2007            | 13.8     | 90.31%            |
| Aggravated Assaults per 100,000 Persons                           | 2008               | 107.7    | 2007            | 93.4     | 15.29%            |
| Burglaries per 100,000 Persons                                    | 2008               | 360.7    | 2007            | 330.4    | 9.16%             |
| Larcenies and Thefts per 100,000 Persons                          | 2008               | 2,263.8  | 2007            | 2,227.7  | 1.62%             |
| Motor Vehicle Thefts per 100,000 Persons                          | 2008               | 126.1    | 2007            | 101.2    | 24.57%            |
| <b>Education</b>  |                    |          |                 |          |                   |
| % of Pop. (25 yrs. & older) with High School Diploma <sup>1</sup> | 2008               | 91.0%    | 2007            | 90.2%    | 0.89%             |
| % of Pop. (25 yrs. & older) with Bachelor's Degree                | 2008               | 24.1%    | 2007            | 24.2%    | -0.41%            |
| Pupil-Teacher Ratio in LCSD #1 <sup>4</sup>                       | 2006-07            | 10.38    | 2005-06         | 10.36    | 0.19%             |
| Pupil-Teacher Ratio in LCSD #2                                    | 2006-07            | 7.46     | 2005-06         | 6.53     | 14.24%            |
| Expenditures Per Pupil in LCSD #1 (\$)                            | 2008-09            | \$13,813 | 2007-08         | \$13,175 | 4.84%             |
| Expenditures Per Pupil in LCSD #2 (\$)                            | 2008-09            | \$20,353 | 2007-08         | \$19,564 | 4.03%             |
| LCSD #1 Enrollment Fall Semester                                  | 2009               | 13,205   | 2008            | 12,933   | 2.10%             |
| LCSD #2 Enrollment Fall Semester                                  | 2009               | 872      | 2008            | 841      | 3.69%             |
| Total School Enrollments Laramie County Fall Semester             | 2009               | 14,395   | 2008            | 14,611   | -1.48%            |
| % of Students in Private Schools                                  | 2009               | 3.3%     | 2008            | 3.0%     | 11.15%            |
| % of Students Home-Schooled                                       | 2009               | 2.8%     | 2008            | 2.4%     | 18.99%            |
| ACT Average Composite Score (range 1-36) LCSD #1                  | 2008-09            | 20.6     | 2007-08         | 21.4     | -3.74%            |
| ACT Average Composite Score (range 1-36) LCSD #2                  | 2008-09            | 20.1     | 2007-08         | 20.4     | -1.47%            |
| LCSD #1 Graduation Rate <sup>5</sup>                              | 2007-08            | 56.6%    | 2006-07         | 74.3%    | -23.82%           |

| ITEMS  | MOST RECENT PERIOD |           | PREVIOUS PERIOD |           | % CHANGE IN VALUE |
|--|--------------------|-----------|-----------------|-----------|-------------------|
|  | YEAR               | VALUE     | YEAR            | VALUE     |                   |
| Average Student Age at LCCC (Fall Semester)  | 2009               | 27        | 2008            | 27        | 0.00%             |
| 3 – Year Graduation Rate at LCCC   | 2009               | 25.3%     | 2008            | 25.0%     | 1.20%             |
| 3 – Year Rate of Transfer from LCCC  | 2009               | 24.9%     | 2008            | 49.0%     | -49.18%           |
| Fall Semester Full-time Equivalent (FTE) Enrollment at Laramie County Community College <sup>7</sup> | 2009               | 3,021     | 2008            | 2,837     | 6.49%             |
| <b>Housing</b>   |                    |           |                 |           |                   |
| Average Rent for 2-3 Bedroom House (\$)³   | 2Q09               | \$892     | 2Q08            | \$899     | -0.78%            |
| Average Rent for 2 Bedroom Apartment (\$)  | 2Q09               | \$587     | 2Q08            | \$601     | -2.33%            |
| Average Rent for 2-3 Bedroom Mobile Home (\$)  | 2Q09               | \$576     | 2Q08            | \$559     | 3.04%             |
| Average Sales Price – Cheyenne   | 2009               | \$168,237 | 2008            | \$173,476 | -3.0%             |
| Average Sales Price – Close-in Rural   | 2009               | \$252,674 | 2008            | \$253,321 | -0.3%             |
| <b>Laramie County's Economy</b>  |                    |           |                 |           |                   |
| Median Household Income¹   | 2008               | \$56,820  | 2007            | \$52,521  | 8.19%             |
| Mean Household Income  | 2007               | \$72,279  | 2006            | \$60,322  | 19.82%            |
| Per Capita Personal Income (\$)⁹   | 2006               | \$39,647  | 2005            | \$36,922  | 7.38%             |
| Average Wage per Job   | 2007               | \$37,206  | 2006            | \$36,433  | 2.12%             |
| Average Annual Pay (\$)¹⁰  | 2007               | \$35,074  | 2006            | \$35,308  | -0.66%            |
| <b>Employment &amp; Labor</b>  |                    |           |                 |           |                   |
| Employment¹²   | 2009               | 44,525    | 2008            | 45,108    | -1.29%            |
| Unemployment Rate¹³  | 2009               | 6.1%      | 2008            | 3.9%      | 56.41%            |
| Total Non-farm Jobs⁹   | 2007               | 60,893    | 2006            | 59,169    | 2.91%             |
| % of Jobs in Farming   | 2007               | 1.39%     | 2006            | 1.49%     | -6.86%            |
| % of Jobs in Mining  | 2007               | N/A       | 2006            | 0.42%     | N/A               |
| % of Jobs in Government  | 2007               | 27.10%    | 2006            | 27.42%    | -1.20%            |
| % of Jobs in Construction  | 2007               | 6.80%     | 2006            | 7.22%     | -5.74%            |
| % of Jobs in Manufacturing   | 2007               | 2.91%     | 2006            | 2.98%     | -2.40%            |
| % of Jobs in Trans. and Ware.  | 2007               | 5.94%     | 2006            | 5.34%     | 11.09%            |
| % of Jobs in FIRE  | 2007               | 8.15%     | 2006            | 8.05%     | 1.25%             |
| % of Jobs in Services  | 2007               | 30.92%    | 2006            | 30.65%    | 0.88%             |
| % of Jobs in Retail Trade  | 2007               | 12.19%    | 2006            | 12.27%    | -0.61%            |
| % of Jobs in Wholesale   | 2007               | 1.68%     | 2006            | 1.69%     | -0.62%            |
| <b>Employed Workforce Demographics¹</b>  |                    |           |                 |           |                   |
| % of Workforce Age 16-19¹  | 2008               | 5.3%      | 2007            | 6.2%      | -13.53%           |
| % of Workforce Age 20-44   | 2008               | 53.9%     | 2007            | 53.9%     | 0.07%             |
| % of Workforce Age 45+   | 2008               | 40.7%     | 2007            | 39.9%     | 2.00%             |
| % of Workforce Male  | 2008               | 55.7%     | 2007            | 53.5%     | 4.00%             |
| % of Workforce Female  | 2008               | 44.3%     | 2007            | 46.5%     | -4.61%            |
| <b>CPI</b>   |                    |           |                 |           |                   |
| U.S. CPI   | 2009               | 214.5     | 2008            | 215.3     | -0.37%            |
| Annual Inflation Rate – Cheyenne   | 2Q09               | 0.2%      | 2Q08            | 6.9%      | -97.10%           |

Sources:

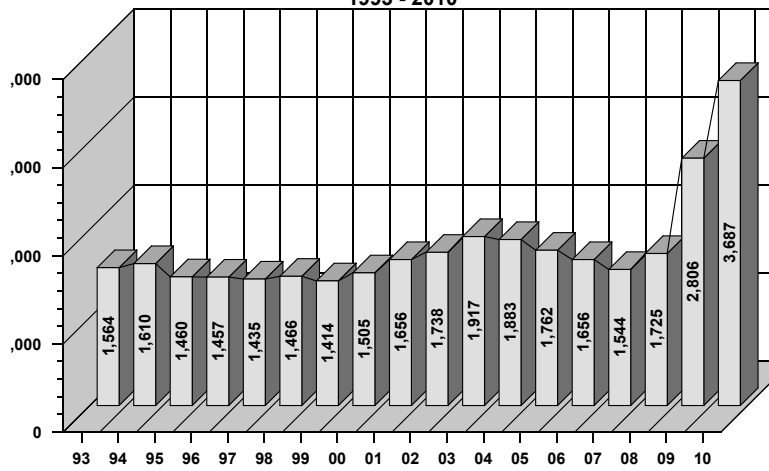
- 1 U.S. Census Bureau
- 2 Western Regional Climate Center
- 3 Wyoming Division of Criminal Investigation
- 4 Laramie County School Districts #1 and #2
- 5 Wyoming Department of Education
- 6 Office of Institutional Analysis, University of Wyoming
- 7 Laramie County Community College
- 8 State of Wyoming, Dept. of Admin. & Info., Economic Analysis Division
- 9 U.S. Commerce Department, Bureau of Economic Analysis
- 10 U.S. Department of Labor, Bureau of Labor Statistics
- 11 City of Cheyenne
- 12 Wyoming Department of Employment, CES Data
- 13 Wyoming Department of Employment, LAUS Data

**LARAMIE COUNTY EMPLOYMENT\***  
 Monthly Average  
 1993 - 2010

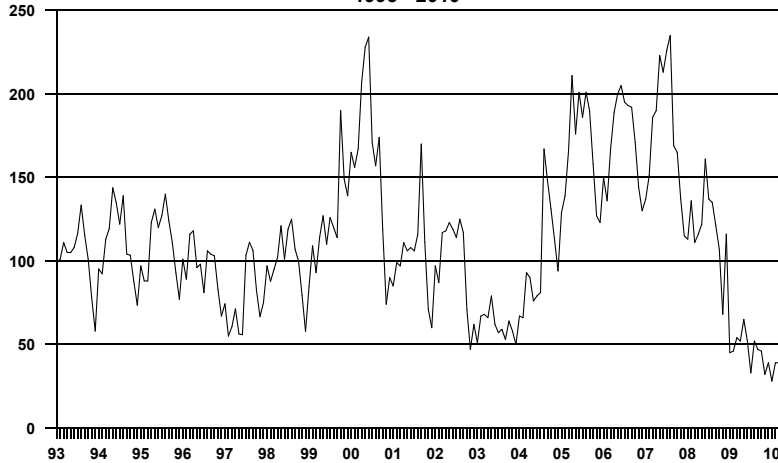


\* Current Employment Statistics (CES)

**LARAMIE COUNTY UNEMPLOYMENT**  
 Monthly Average  
 1993 - 2010

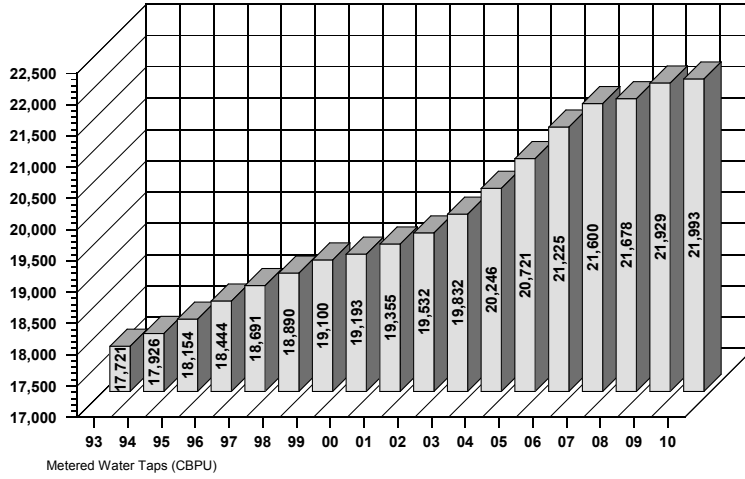


**HELP - WANTED ADS, CHEYENNE**  
 Monthly Totals  
 1993 - 2010



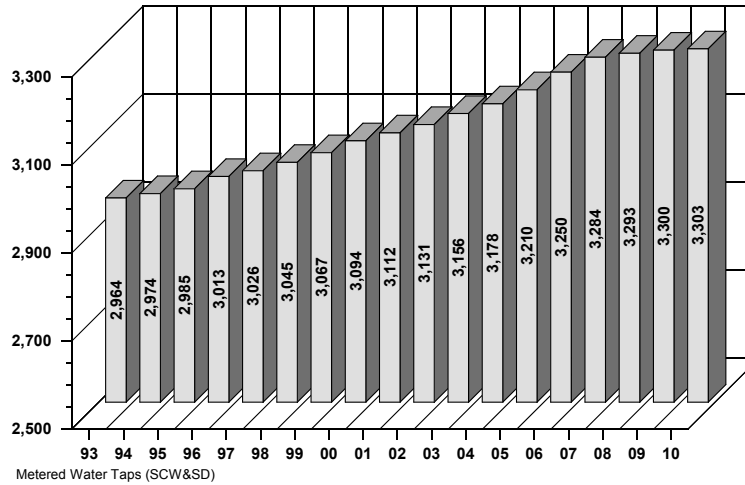
### CHEYENNE METERED WATER TAPS

Monthly Average  
1993 - 2010



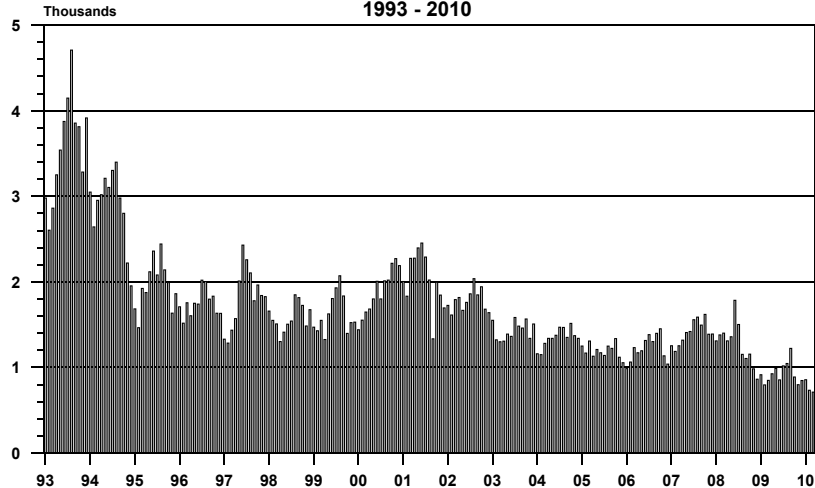
### SOUTH CHEYENNE METERED WATER TAPS

Monthly Average  
1993 - 2010



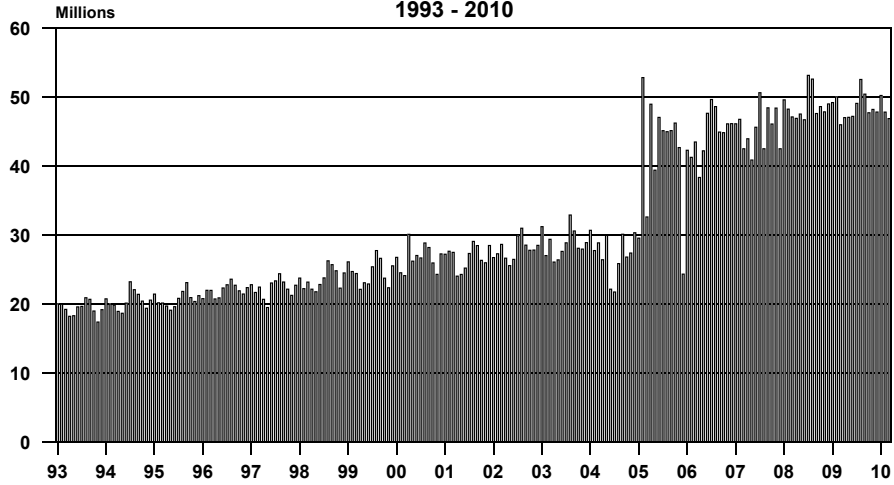
### ENPLANEMENTS, CHEYENNE AIRPORT

Monthly Totals  
1993 - 2010



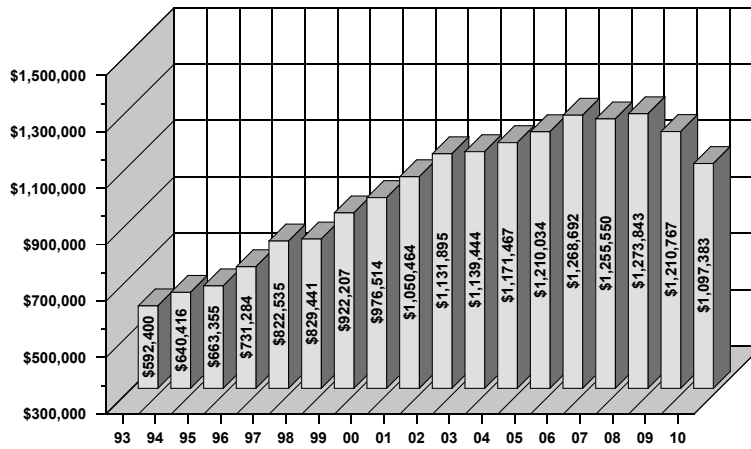
## COMMERCIAL ELECTRIC POWER SALES, CHEYENNE

Monthly Totals  
1993 - 2010



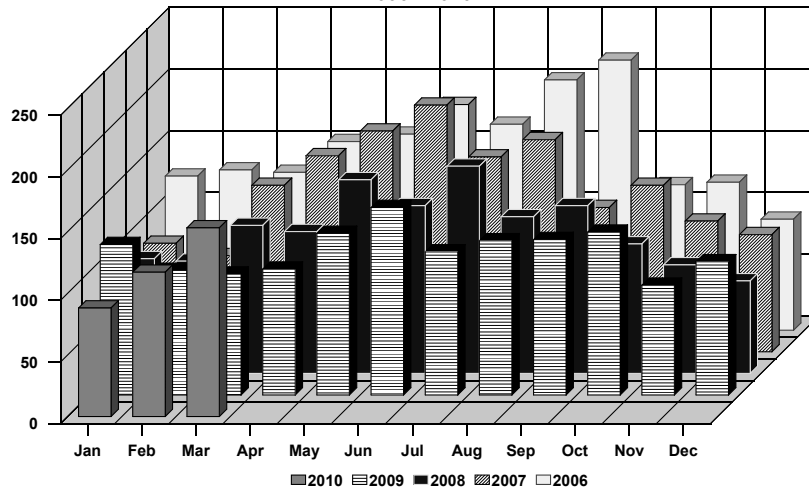
## LARAMIE COUNTY 1% OPTIONAL SALES AND USE TAX RECEIPTS

Monthly Average  
1993 - 2010

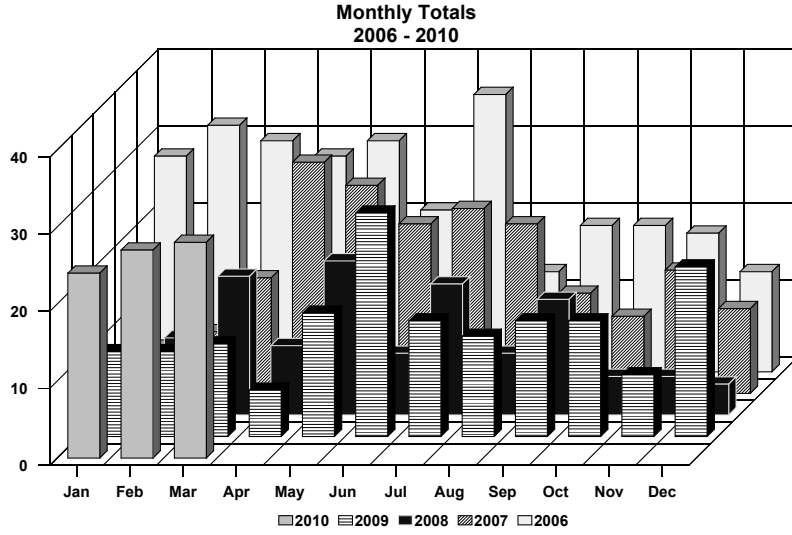


## TOTAL BUILDING PERMITS, CHEYENNE

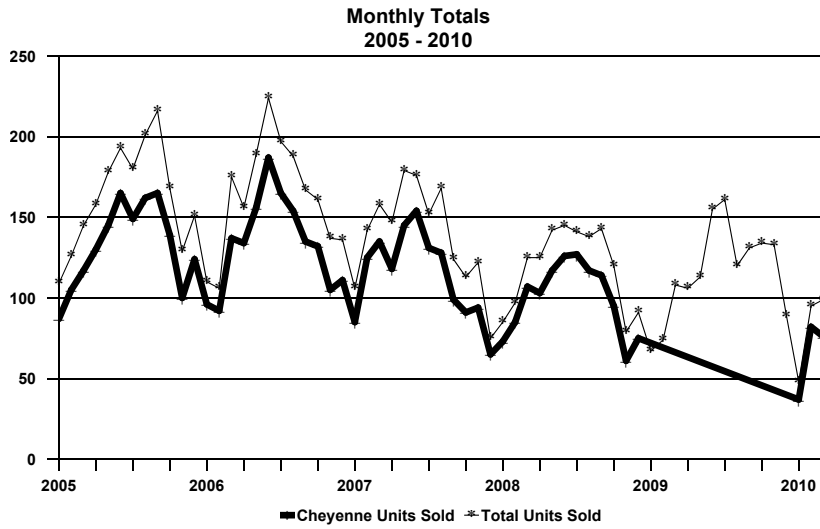
Monthly Totals  
2006 - 2010



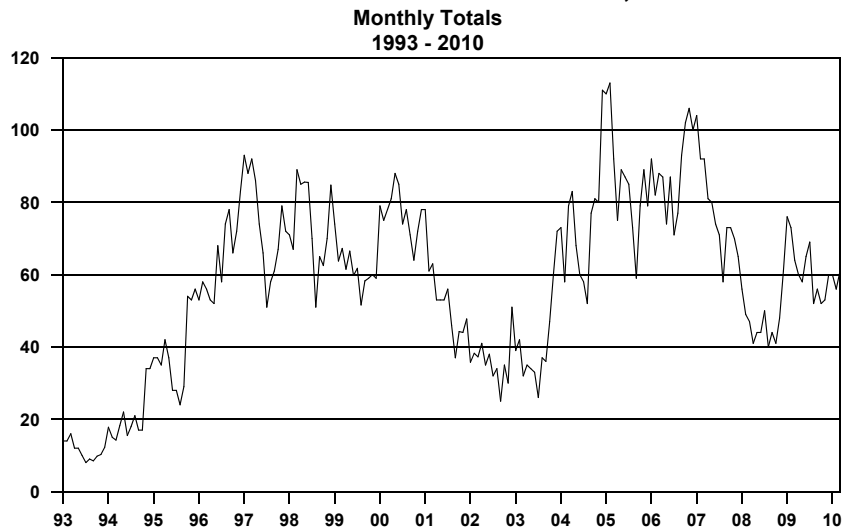
### SINGLE-FAMILY BUILDING PERMITS, CHEYENNE



### RESIDENTIAL UNITS SOLD

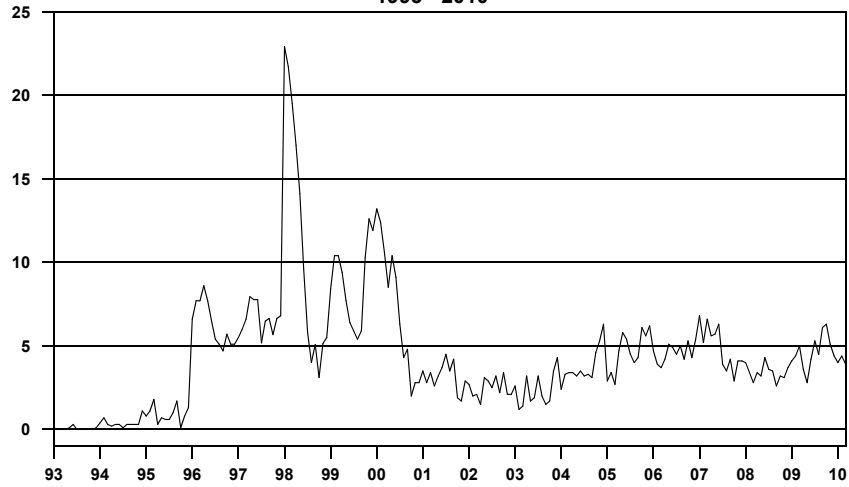


### UNFURNISHED APARTMENT VACANCIES, CHEYENNE



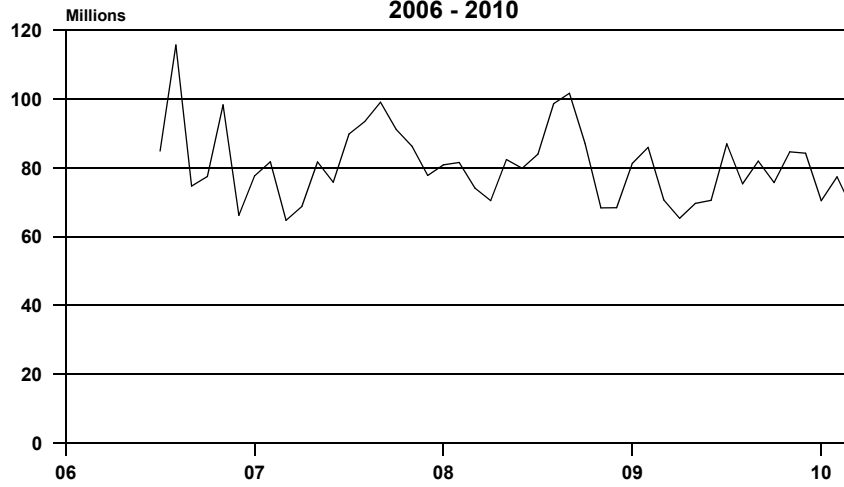
### SAMPLED APARTMENTS - PERCENT VACANT, CHEYENNE

Monthly Totals  
1993 - 2010



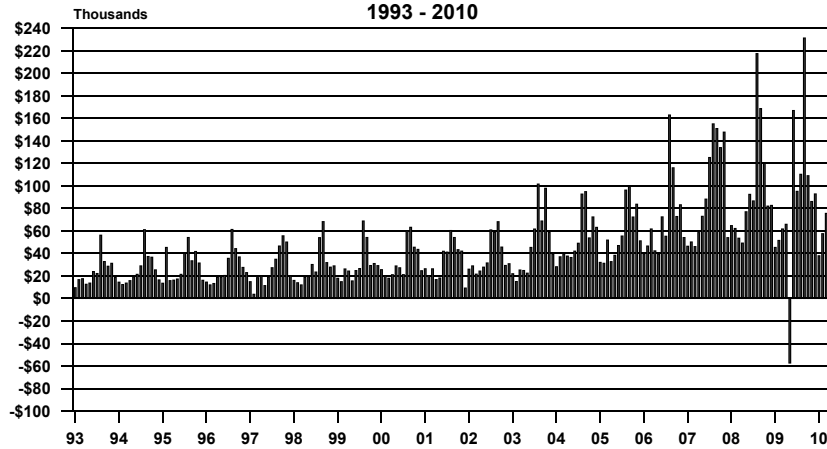
### RETAIL SALES, LARAMIE COUNTY

Monthly Totals  
2006 - 2010



### LODGING TAX RECEIPTS, LARAMIE COUNTY

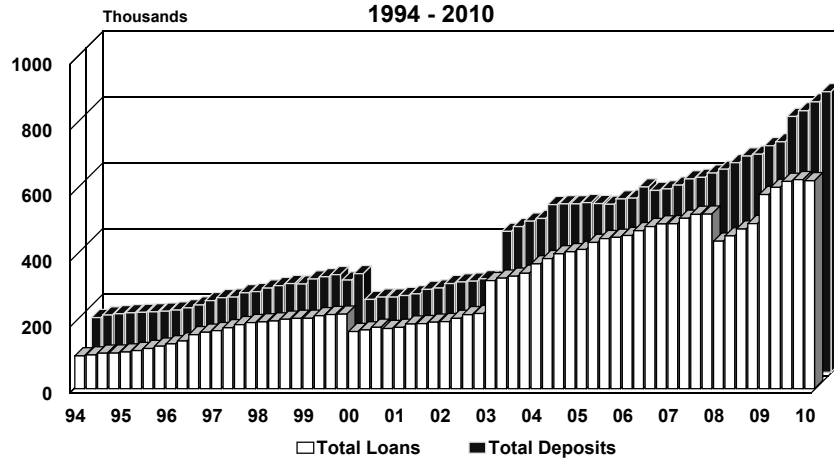
Monthly Totals  
1993 - 2010



2% Lodging Tax effective 7/1/87 thru 3/31/03  
3% Lodging Tax effective 4/1/03 thru 3/31/07  
4% Lodging Tax effective 4/1/07

## TOTAL LOANS AND DEPOSITS

### Cheyenne Area Credit Unions

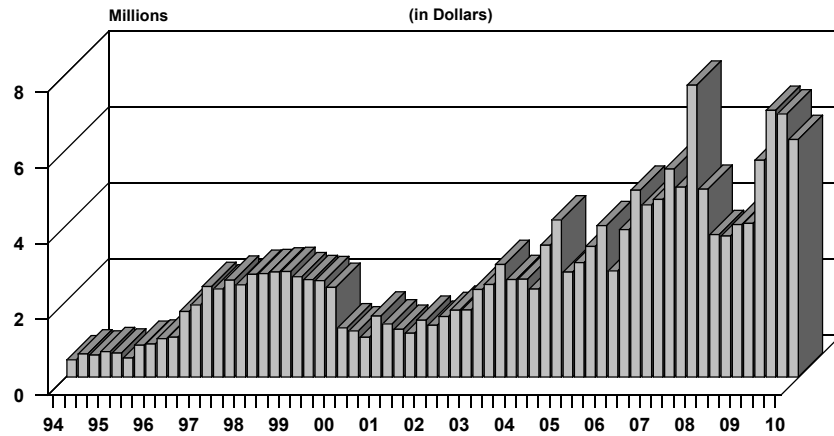


a) As of January 1, 2000, one Credit Union discontinued reporting their statistics.  
 b) Beginning in 2003, the data reflects two additional credit unions

## DELINQUENCIES

### Cheyenne Area Credit Unions

1994 - 2010  
(in Dollars)

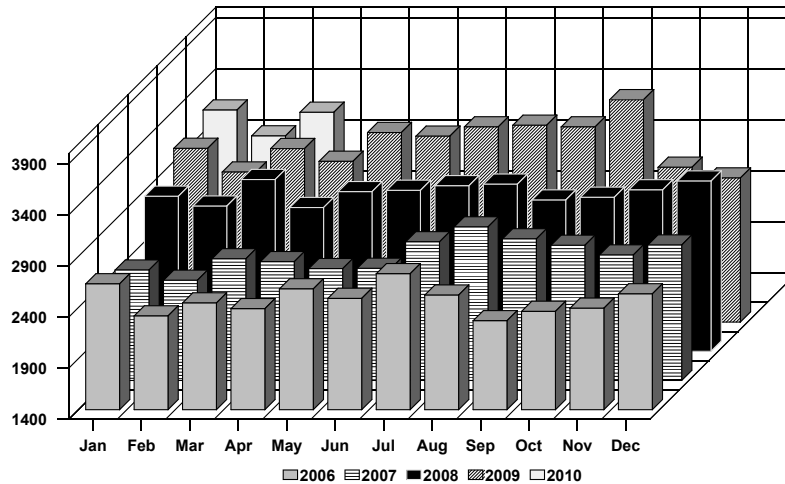


a) As of January 1, 2000, one Credit Union discontinued reporting their statistics.  
 b) Beginning in 2003, the data reflects two additional credit unions

## TOTAL EMERGENCY ROOM VISITS, CHEYENNE

### Monthly Totals

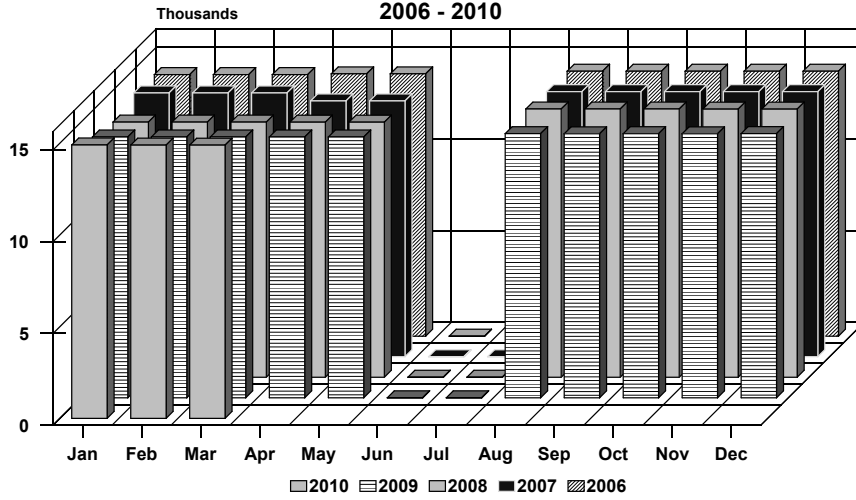
2006 - 2010



# LARAMIE COUNTY SCHOOLS

## Monthly Totals

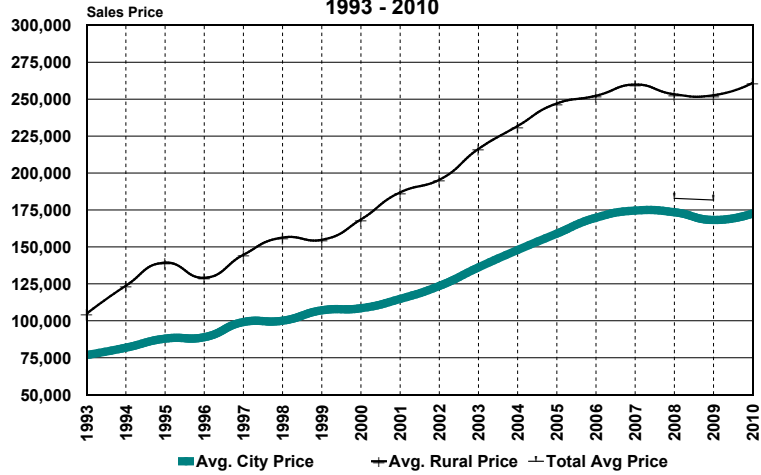
2006 - 2010



# AVERAGE CITY AND RURAL RESIDENTIAL SALE PRICES

## Laramie County

1993 - 2010



\*Data is incomplete for 1995.

## DATA SOURCES

1. Automobile Registrations:  
Laramie County Auto Titles Bureau
2. Bankruptcies: U.S. Clerk of Bankruptcy Court
3. Construction, Permits, Valuation, Residential:  
City of Cheyenne Building Permits Department  
Laramie County Planning & Development Office
4. Employment:  
Wyoming Department of Employment
5. Help-Wanted Advertisements:  
Wyoming Center for Business & Economic Analysis, Inc.
6. Sales and Use Tax Collections:  
Wyoming Department of Revenue; Department of  
Administration & Information
7. Utilities, Electrical, and Natural Gas:  
Cheyenne Light, Fuel & Power
8. Water Usage - Metered Taps:  
Board of Public Utilities  
South Cheyenne Sewer & Water District
9. Enplanements: Cheyenne Airport Board
10. Housing:  
Wyoming Center for Business & Economic Analysis, Inc.  
Cheyenne Board of Realtors
11. Human Services:  
Cheyenne Police Department, Cheyenne Regional Medical  
Center, Safehouse, Comea Shelter, Department of Family  
Services, School Districts No. 1 and No. 2, Private Schools.
12. Financial Data:  
Cheyenne Area Credit Unions (9)  
Cheyenne Area Banks (7)
13. Tourism:  
Cheyenne Area Convention & Visitors Bureau

---

Wyoming Center for Business & Economic Analysis, Inc.  
1720 Carey Ave., Suite 520 • Cheyenne, Wyoming 82001  
(307) 632-1347