

Economic Indicators for the Laramie Area



Pictured is the New Wyoming Technology Business Center at the University of Wyoming

Wyoming Center for Business & Economic Analysis, LLC.

Volume IX, Number 2
September, 2006

TABLE OF CONTENTS

| | |
|------------------------------------|----|
| FRONT MATTER | |
| Preface | ii |
| ECONOMIC ANALYSIS | |
| Economic Indicators Analysis | 1 |
| Data Tables | 3 |
| Laramie/Albany County Profile..... | 9 |
| Economic Indicator Graphs..... | 11 |
| Data Sources..... | 15 |

COMMUNICATIONS

Data Center Phone: (307) 632-1347
Data Center FAX: (307) 632-1368
Editor e-mail: rto@wyomingeconomicdata.com
Mailing Address: Wyoming Center for Business &
Economic Analysis, LLC.
1912 Capitol Ave., Suite 407
Cheyenne, WY 82001

EditorR.T. O'Gara
Research Assistance Jill Reuer
Typography Stacy Shultz-Bisset

For subscription rates, please see the last page.

The articles appearing in this publication represent the opinions of the authors and do not necessarily reflect the views of funding agencies and organizations. Duplication or quotation of material in this publication is welcomed, but it is requested that the Center be credited.

PREFACE

Two major and permanent changes have made to the Economic Indicators for the Laramie Area beginning with this issue. First, the Laramie/Albany County Profile has been substantially reformatted and expanded in scope. Second, we have added colors to the entire publication with the hope it will make this report more reader friendly.

Readers should note that the Economic Indicators for the Laramie Area is now published twice a year. An Annual Trends edition is published in March of each year and then a third quarter edition will be published in September of each year. This report is for the third quarter of 2006.

City metered water taps were not available. Numerous attempts were made to obtain this information from the appropriate sources.

ECONOMIC INDICATORS

ANALYSIS

POPULATION

The most recent population estimates from the U.S. Census Bureau reported that Albany County's population as of July 1, 2005 stood at 30,890 which was a decline of 1.6 percent or 507 persons from July 2004. The Bureau has consistently reported declining population figures for the county since the 2000 Census. According to their figures, the county has lost 1,124 persons since that time. However, this estimated population decline is strongly contradicted by the fact that the county's economy has grown over this same time period. Generally, a local economic system does not grow in the face of a declining population base.

EMPLOYMENT

The county's labor force was down fractionally from second quarter 2005, off by 0.5 percent or 92 workers. The labor force averaged 19,921 individuals per month during the second quarter of 2006. Similarly, new job creation decreased marginally on a year-to-date basis, dropping 0.4 percent or 79 workers. While there were small declines in employment numbers from second quarter 2005, this was not the case between the years 2000 and 2005. Over this period, employment in Albany County increased from an annual monthly average of 17,681 in 2000 to 19,409 in 2005, a gain of 9.8 percent.

The number of unemployed workers decreased from last year, down 2.1 percent or 13 persons. The unemployment rate (3.1%) was unchanged from second quarter 2005 at an average of 608 persons per month.

Help-wanted advertisements surged over the course of the second quarter of 2006. Advertisements averaged 91 per week during the current quarter as compared to 55 from one year ago, a gain of 65 percent. First quarter 2006's average was 59 per week by comparison.

GENERAL BUSINESS

The three indicators under this heading posted very strong gains when compared to second quarter 2005 data. Automobile registrations jumped 84 percent from this time last year, with a gain of 90 registrations. From second quarter 2004, the increase was more modest, up 6.5 percent (12 registrations).

Enplanements (out-bound airplane boardings) rose 7 percent from second quarter 2005 and 8 percent from two years ago.

Retail sales, as measured by the proxy variable total taxable sales, were up sharply from second quarter 2005. This indicator rose 20.4 percent from one year ago. A closer

examination of sales tax collection statistics showed that a large majority of this gain was ascribable to construction activities associated with the installation of new utility system infrastructures. In other words, this large increase in retail sales appeared to be a one time event and the current numbers overstate retail sales growth. In dollar value, retail sales ran at a rate of 43 million dollars per month during the second quarter of this year as compared to 35.7 million dollars in second quarter 2005.

CONSTRUCTION

Like the majority of communities throughout Wyoming, Albany County and the City of Laramie saw a pronounced softening in its residential construction market over the first half of 2006. New single-family building permits within the city decreased 57 percent from one year ago, down 24 permits. The average number of monthly permits during the quarter was 18 as compared to 42 this time last year. The value of residential construction also fell by 58 percent from last year with the current monthly average at \$721,000 as compared to \$1,715,000 in the second quarter of 2005. Rural residential construction did much better. It remained unchanged from last year with a monthly average of 21 in the current quarter as compared to 20 this time one year ago.

There was also a marked decline in overall construction activity with the dollar value of all construction activity down 36.5 percent from second quarter 2005. The total dollar valuation of all construction averaged 4.3 million in the second quarter of this year as compared to 6.8 million one year ago.

There were no new permits reported during the second quarter of 2006 for commercial or industrial construction. Last year at the same time, new business construction averaged 2.6 million dollars per month. Please see Tables 1 and 5 for further details.

FINANCIAL ACTIVITY

Measures of local government fiscal health (tax revenues) moved in the same direction and by similar growth rates as that of retail sales which were reported earlier in this analysis. Total tax collections for the second quarter increased 20.5 percent over one year ago and actual tax receipts to local government entities rose 20.3 percent. 3% Lodging Tax receipts fared a little better than two measures just mentioned, up 24.4 percent from one year ago. As mentioned earlier, we do not think these large increases will be sustained for the balance of 2006.

UTILITIES

Residential utility indicators registered moderate gains over the first six months of 2006. Residential electric hookups increased 2.3 percent (291 meters) from the second quarter of 2005 and stood 4.6 percent ahead of second quarter 2004. Residential gas hookups also rose, but at a smaller rate, up 1.7 percent from one year ago and 4.3 percent

from 2004. Total gas hookups stood at 9,929 through the first six months of this year as compared to 9,761 during the second quarter of 2005 and 9,524 in 2004.

Electric hookups at commercial establishments were marginally ahead, up 0.4 percent from second quarter 2005 (9 meters) while industrial hookups remained unchanged over the same period. Commercial gas hookups decreased on year-to-year basis, down 1.3 percent (-14 meters).

TABLE 1

| | A 2Q04 | B 2Q05 | C 1Q06 | D 2Q06 | PERCENTAGE CHANGE A TO D | PERCENTAGE CHANGE B TO D | PERCENTAGE CHANGE C TO D |
|---|-----------|-----------|-----------|-----------|--------------------------------|--------------------------------|--------------------------------|
| EMPLOYMENT | | | | | | | |
| Total Civilian Labor Force | 20,409 | 20,013 | 20,428 | 19,921 | -2.39 | -0.46 | -2.48 |
| Total Employment | 19,783 | 19,392 | 19,758 | 19,313 | -2.38 | -0.41 | -2.25 |
| Total Unemployment | 626 | 621 | 670 | 608 | -2.88 | -2.09 | -9.25 |
| Unemployment Rate | 3.1% | 3.1% | 3.3% | 3.1% | 0.00 | 0.00 | -6.06 |
| Initial Unemployment Claims | 10 | 10 | 20 | 8 | -20.00 | -20.00 | -60.00 |
| Help Wanted Ads | 35 | 55 | 59 | 91 | 160.00 | 65.45 | 54.24 |
| GENERAL BUSINESS ACTIVITY | | | | | | | |
| Auto Registrations New & Used | 185 | 107 | 152 | 197 | 6.49 | 84.11 | 29.61 |
| Enplanements - Laramie Regional Airport | 671 | 681 | 736 | 727 | 8.35 | 6.75 | -1.22 |
| Total Taxable Sales (\$000) | 107,231 | 107,115 | 129,398 | 128,963 | 20.27 | 20.40 | -0.34 |
| CONSTRUCTION | | | | | | | |
| Single Fam Bldg Permits - Laramie | 43 | 42 | 20 | 18 | -58.14 | -57.14 | -10.00 |
| Total Bldg Permits - (Laramie) (a) | 150 | 212 | 144 | 159 | 6.00 | -25.00 | 10.42 |
| Rural Bldg Permits | 18 | 20 | 6 | 21 | 16.67 | 5.00 | 100.00 |
| Value of Authorized Construction (\$000) | 6,889 | 6,764 | 5,139 | 4,296 | -37.64 | -36.49 | -16.40 |
| Residential (\$000) | 2,131 | 1,715 | 921 | 721 | -66.17 | -57.96 | -21.72 |
| Total Business Construction (\$000) | 1,340 | 2,615 | 599 | 0 | -100.00 | -100.00 | -100.00 |

(a) Data includes building and non-building.

Note: Each figure reported under Employment, General Business, and Construction is a monthly average for the quarter.

TABLE 1 A

| Housing Profile Albany County 2005 Authorized Construction by Permit | | | | | | Housing Profile Albany County 2006 Authorized Construction by Permit | | | | | |
|---|------------|-------------------------|------------------------------------|--------------------------|------------------------|---|------------|-------------------------|------------------------------------|--------------------------|------------------------|
| MONTH | SFU | DUPLEX UNITS | TRI & FOUR PLEX | MULTI- FAMILY | TOTAL UNITS | MONTH | SFU | DUPLEX UNITS | TRI & FOUR PLEX | MULTI- FAMILY | TOTAL UNITS |
| January | 8 | 0 | 23 | 52 | 83 | January | 3 | 0 | 0 | 0 | 3 |
| February | 12 | 0 | 0 | 8 | 20 | February | 6 | 0 | 12 | 0 | 18 |
| March | 17 | 0 | 23 | 12 | 52 | March | 11 | 4 | 12 | 0 | 27 |
| April | 32 | 0 | 8 | 16 | 56 | April | 7 | 32 | 0 | 18 | 57 |
| May | 33 | 0 | 0 | 0 | 33 | May | 3 | 2 | 12 | 0 | 17 |
| June | 36 | 0 | 0 | 0 | 36 | June | 8 | 0 | 0 | 0 | 8 |
| July | 29 | 0 | 0 | 36 | 65 | July | | | | | 0 |
| August | 24 | 0 | 0 | 168 | 192 | August | | | | | 0 |
| September | 27 | 0 | 4 | 0 | 31 | September | | | | | 0 |
| October | 11 | 0 | 0 | 0 | 11 | October | | | | | 0 |
| November | 12 | 0 | 0 | 0 | 12 | November | | | | | 0 |
| December | 12 | 0 | 52 | 0 | 64 | December | | | | | 0 |
| Year to Date | 253 | 0 | 110 | 292 | 655 | Year to Date | 38 | 38 | 36 | 18 | 130 |

TABLE 2

| | A 2Q04 | B 2Q05 | C 1Q06 | D 2Q06 | PERCENTAGE CHANGE A TO D | PERCENTAGE CHANGE B TO D | PERCENTAGE CHANGE C TO D |
|---|-----------|-----------|-----------|-----------|--------------------------------|--------------------------------|--------------------------------|
| FINANCIAL ACTIVITY(a) | | | | | | | |
| Total Tax Collections (\$000) | 6,592 | 6,579 | 7,954 | 7,927 | 20.25 | 20.49 | -0.34 |
| Wholesale & Retail Tax Collections (\$000) | 3,890 | 3,429 | 4,273 | 3,291 | -15.40 | -4.02 | -22.98 |
| Actual Receipts to County Entities (\$000) (b) | 2,303 | 2,323 | 2,803 | 2,794 | 21.32 | 20.28 | -0.32 |
| Total 1% Sales & Use Tax Distributions (\$000) | 1,072 | 1,071 | 1,294 | 1,290 | 20.34 | 20.45 | -0.31 |
| Total 3% Lodging Tax Distributions (\$) | 75,331 | 76,410 | 92,464 | 95,036 | 26.16 | 24.38 | 2.78 |

(a) All Series are reported as quarterly totals

(b) This total includes the 4% Sales and 4% Use Tax, the 1% Sales and 1% Use Tax, the Out of State Use Tax, and the Out of State Sales Tax. As of July 1, 1993, the state sales and use tax levy was changed from 3% to 4%. The percentage of these revenues distributed to municipalities change over time and presently it is 29.5%

TABLE 3

| | A 2Q04 | B 2Q05 | C 1Q06 | D 2Q06 | PERCENTAGE CHANGE A TO D | PERCENTAGE CHANGE B TO D | PERCENTAGE CHANGE C TO D |
|---|-----------|-----------|-----------|-----------|--------------------------------|--------------------------------|--------------------------------|
| UTILITIES | | | | | | | |
| Residential Electric Hookups - Active Meters | 12,492 | 12,773 | 13,059 | 13,064 | 4.58 | 2.28 | 0.04 |
| Commercial Electric Hookups - Active Meters | 2,096 | 2,116 | 2,114 | 2,125 | 1.38 | 0.43 | 0.52 |
| Industrial Electric Hookups - Active Meters | 22 | 21 | 21 | 21 | -4.55 | 0.00 | 0.00 |
| Residential Gas Hookups - Active Meters | 9,524 | 9,761 | 9,929 | 9,929 | 4.25 | 1.72 | 0.00 |
| Commercial Gas Hookups - Active Meters | 931 | 1,112 | 1,098 | 1,098 | 17.94 | -1.26 | 0.00 |
| Metered Taps - Water (a) | N/A | N/A | N/A | N/A | N/A | N/A | N/A |
| EDUCATION | | | | | | | |
| School Enrollments | | | | | | | |
| Districts #1 and #2 | 3,639 | 3,484 | 3,456 | 3,466 | -0.52 | -0.52 | 0.29 |
| Private Schools | 129 | 104 | 68 | 68 | -47.29 | -34.62 | 0.00 |
| Home School | 106 | 104 | 124 | 124 | 16.98 | 19.23 | 0.00 |
| Avg. Total School Enrollment | 3,874 | 3,692 | 3,648 | 3,658 | -5.58 | -0.92 | 0.27 |
| University of Wyoming (Headcount) (a) | 3,221 | 3,193 | 9,059 | 2,978 | -7.54 | -6.73 | -67.13 ¹ |
| University of Wyoming (FTE) (b) | 1,181 | 1,190 | 8,217 | 1,095 | -7.28 | -7.98 | -86.67 ¹ |
| LCCC - Albany Co. Campus (FTE) (b) | 68 | 54 | 534 | 74 | 8.82 | 37.04 | -86.14 ¹ |
| LCCC - Albany Co. Campus (Headcount) | 161 | 146 | 1,032 | 207 | 28.57 | 41.78 | -79.94 ¹ |
| Wyoming Technical Institute | 1,981 | 2,124 | 2,226 | 1,947 | -1.72 | -8.33 | -12.53 |

Note: Figures reported are an average for the three months.
N/A indicates the information was not available.

(a) Metered water taps are billed quarterly. Figures reported are total number of taps billed per quarter.

(b) University of Wyoming figures are for the main campus only.

¹ Percentage declines are comparing spring semester to summer semester enrollments.

TABLE 4

| | JAN | FEB | MAR | APR | MAY | JUN | JUL | AUG | SEP | OCT | NOV | DEC | AVG | YEAR |
|-----------------------------------|--------------------------|--------------------------|--------------------------|--------------------------|--------------------------|--------------------------|-----------------|-----------------|-----------------|-----------------|-----------------|-----------------|--------------------------|--------------|
| EMPLOYMENT | | | | | | | | | | | | | | |
| Total Civilian Labor Force | 20,036 19,940 | 20,569 20,582 | 20,642 20,762 | 20,303 20,720 | 20,432 20,045 | 19,303 18,999 | 18,727 0 | 18,588 0 | 19,565 0 | 20,476 0 | 20,731 0 | 20,528 0 | 19,992 20,175 | 2005 2006 |
| Total Employment | 19,348 19,235 | 19,942 19,901 | 20,057 20,138 | 19,716 20,102 | 19,791 19,406 | 18,669 18,432 | 18,153 0 | 18,054 0 | 19,043 0 | 19,943 0 | 20,183 0 | 20,011 0 | 19,409 19,536 | 2005 2006 |
| Total Unemployment | 688 705 | 627 681 | 585 62 | 587 618 | 641 639 | 634 567 | 574 0 | 534 0 | 522 0 | 533 0 | 548 0 | 517 0 | 583 639 | 2005 2006 |
| Unemployment Rate | 3.4% 3.5% | 3.0% 3.3% | 2.8% 3.0% | 2.9% 3.0% | 3.1% 3.2% | 3.3% 3.0% | 3.1% 0.0% | 2.9% 0.0% | 2.7% 0.0% | 2.6% 0.0% | 2.6% 0.0% | 2.5% 0.0% | 2.9% 3.2% | 2005 2006 |
| Initial Unemployment Claims | 24 16 | 14 10 | 11 33 | 10 10 | 9 10 | 11 5 | 9 0 | 4 0 | 8 0 | 11 0 | 13 0 | 37 0 | 13 14 | 2005 2006 |
| Help Wanted Ads | 39 52 | 39 61 | 48 65 | 58 87 | 54 102 | 54 83 | 66 0 | 75 0 | 78 0 | 60 0 | 49 0 | 49 0 | 56 75 | 2005 2006 |
| GENERAL BUSINESS ACTIVITY | | | | | | | | | | | | | | |
| New Car & Truck Sales | 97 130 | 66 137 | 102 189 | 99 169 | 100 199 | 123 222 | 199 0 | 219 0 | 167 0 | 158 0 | 99 0 | 136 0 | 130 174 | 2005 2006 |
| Enplanements Laramie Reg. Airport | 634 702 | 657 691 | 792 814 | 686 737 | 730 691 | 627 754 | 652 0 | 676 0 | 713 0 | 754 0 | 735 0 | 875 0 | 711 732 | 2005 2006 |
| Total Taxable Sales | 37,319,823 40,139,638 | 38,393,620 41,023,680 | 43,212,735 48,234,220 | 32,686,616 25,318,354 | 36,021,204 43,806,678 | 38,406,971 59,838,458 | 33,191,900 0 | 55,357,200 0 | 38,956,200 0 | 43,426,900 0 | 35,605,700 0 | 38,089,900 0 | 39,222,397 43,060,171 | 2005 2006 |

TABLE 5

| | JAN | FEB | MAR | APR | MAY | JUN | JUL | AUG | SEP | OCT | NOV | DEC | AVG | YEAR |
|--|------------------------|------------------------|-------------------------|------------------------|------------------------|------------------------|----------------|-----------------|----------------|-----------------|----------------|-----------------|------------------------|--------------|
| CONSTRUCTION | | | | | | | | | | | | | | |
| Total Building Permits - Albany County | 175 154 | 120 98 | 135 179 | 202 118 | 179 153 | 256 207 | 144 0 | 212 0 | 168 0 | 121 0 | 132 0 | 104 0 | 162 152 | 2005 2006 |
| Sing. Fam. Bldg. Perm. - Laramie | 6 3 | 9 6 | 9 11 | 17 7 | 14 3 | 11 8 | 5 0 | 6 0 | 7 0 | 1 0 | 6 0 | 7 0 | 8 6 | 2005 2006 |
| Rural Bldg. Perm. - Albany County | 4 5 | 3 7 | 8 6 | 15 15 | 19 19 | 25 28 | 24 0 | 18 0 | 20 0 | 10 0 | 6 0 | 5 0 | 13 13 | 2005 2006 |
| Value of Authorized Construction | 5,483,979 1,482,530 | 2,206,428 3,860,324 | 4,801,930 10,073,505 | 4,799,339 4,524,655 | 7,022,515 5,114,957 | 8,468,866 3,249,365 | 3,527,125 0 | 19,762,582 0 | 4,607,671 0 | 11,163,111 0 | 5,658,080 0 | 16,283,429 0 | 7,815,421 4,717,556 | 2005 2006 |
| Business Construction | 0 0 | 31,500 0 | 1,895 1,797,131 | 130,000 0 | 3,147,500 0 | 4,566,048 0 | 0 0 | 1,958,200 0 | 475,449 0 | 328,500 0 | 0 0 | 10,360,000 0 | 1,749,924 299,522 | 2005 2006 |
| Residential Construction | 393,879 485,030 | 940,800 931,302 | 1,314,800 1,337,254 | 2,121,436 852,738 | 1,724,172 324,830 | 1,299,569 986,890 | 469,732 0 | 622,120 0 | 961,036 0 | 100,000 0 | 781,833 0 | 902,560 0 | 969,328 821,341 | 2005 2006 |
| UTILITIES | | | | | | | | | | | | | | |
| Power Sales Commercial Active Meters | 2,115 2,113 | 2,115 2,112 | 2,116 2,116 | 2,121 2,114 | 2,114 2,132 | 2,113 2,130 | 2,118 0 | 2,127 0 | 2,126 0 | 2,104 0 | 2,101 0 | 2,109 0 | 2,115 2,120 | 2005 2006 |
| Gas Consumption Residential Active Meters | 9,761 9,929 | 9,761 9,929 | 9,761 9,929 | 9,761 9,929 | 9,761 9,929 | 9,761 9,929 | 9,817 0 | 9,817 0 | 9,817 0 | 9,817 0 | 9,817 0 | 9,817 0 | 9,789 9,929 | 2005 2006 |
| TAXES | | | | | | | | | | | | | | |
| Total Sales and Use Tax Collections | 2,295,021 2,464,855 | 2,363,014 2,523,943 | 2,336,319 2,965,377 | 2,008,097 1,561,734 | 2,215,684 2,698,640 | 2,355,055 3,666,843 | 2,043,683 0 | 3,425,409 0 | 2,423,770 0 | 2,688,038 0 | 2,210,515 0 | 2,357,443 0 | 2,393,504 2,646,899 | 2005 2006 |
| Wholesale and Retail Sales and Use Tax Collections | 1,334,326 1,364,464 | 1,306,380 1,365,280 | 1,379,613 1,543,287 | 1,034,566 639,430 | 1,137,197 1,377,165 | 1,256,936 1,274,736 | 1,042,805 0 | 1,957,644 0 | 1,245,393 0 | 1,358,442 0 | 963,591 0 | 1,208,512 0 | 1,268,784 1,260,727 | 2005 2006 |
| 1% Sales and Use Tax Receipts | 373,198 401,396 | 383,936 410,237 | 432,127 482,342 | 326,866 253,184 | 360,212 438,067 | 384,070 598,385 | 331,919 0 | 553,572 0 | 389,562 0 | 434,269 0 | 356,057 0 | 380,899 0 | 392,224 430,602 | 2005 2006 |
| 3% Lodging Tax Receipts | 26,307 27,298 | 28,046 31,039 | 28,798 34,127 | 24,265 22,059 | 28,348 38,706 | 23,797 34,271 | 28,133 0 | 61,619 0 | 56,055 0 | 51,769 0 | 46,303 0 | 43,552 0 | 37,249 31,250 | 2005 2006 |

LARAMIE/ALBANY COUNTY PROFILE 2006

| ITEMS | MOST RECENT PERIOD | | PREVIOUS PERIOD | | % CHANGE |
|--|--------------------|---------|-----------------|----------|----------|
| | YEAR | VALUE | YEAR | VALUE | IN VALUE |
| DEMOGRAPHY | | | | | |
| Total Population ¹ | 2005 | 30,890 | 2004 | 31,397 | -1.61% |
| Total Male Population | 2005 | 15,587 | 2004 | 16,102 | -3.20% |
| Total Female Population | 2005 | 15,033 | 2004 | 15,295 | -1.71% |
| % of Population - Under 20 Years Old | 2005 | 16.6% | 2004 | 16.8% | -1.19% |
| % of Population - 65 Years & Older | 2005 | 8.8% | 2004 | 8.5% | 3.53% |
| Median Age | 2005 | 26.8 | 2004 | 26.7 | 0.37% |
| % of Population - White Alone (Non-Hispanic) | 2005 | 87.7% | 2004 | 87.7% | 0.00% |
| % of Population - Native American Alone | 2005 | 10.0% | 2004 | 10.0% | 0.00% |
| % of Population - Hispanic or Latino | 2005 | 6.8% | 2004 | 6.9% | -1.45% |
| % of Households (HH) Headed by Married Couples | 2000 | 42.0% | 1990 | 46.2% | -9.09% |
| % of HH Headed by Single Female (w/own children <18 yrs.) | 2000 | 7.5% | 1990 | 8.0% | -6.25% |
| WEATHER & GEOGRAPHY | | | | | |
| Total Area (sq. miles) ¹ | 2000 | 4,273 | - | - | |
| Water Area (sq. miles) | 2000 | 36 | - | - | |
| Mean Elevation (ft.) | 2000 | 7,163 | - | - | |
| Normal Mean Temperature (F) - Laramie ² | 1971-2000 | 40.3 | 1961-1990 | 40.4 | -0.25% |
| Average Annual Precipitation (inches) - Laramie ² | 1971-2000 | 11.7 | 1961-1990 | 10.9 | 7.61% |
| Average Wind Speed (mph) | 1992-2002 | 12.2 | - | - | |
| CRIME & LAW ENFORCEMENT | | | | | |
| Crimes ³ | 2005 | 1,098 | 2004 | 1,274 | -13.81% |
| Crimes per 100,000 Persons | 2005 | 3,470 | 2004 | 3,954 | -12.24% |
| Murders per 100,000 Persons | 2005 | 6.3 | 2004 | 3.1 | 103.23% |
| Rapes per 100,000 Persons | 2005 | 3.2 | 2004 | 3.1 | 3.23% |
| Robberies per 100,000 Persons | 2005 | 6.3 | 2004 | 6.2 | 1.61% |
| Aggravated Assaults per 100,000 Persons | 2005 | 79 | 2004 | 96.2 | -17.88% |
| Burglaries per 100,000 Persons | 2005 | 347.6 | 2004 | 549.3 | -36.72% |
| Larcenies & Thefts per 100,000 Persons | 2005 | 2,891.5 | 2004 | 3,143.7 | -8.02% |
| Motor Vehicle Thefts per 100,000 Persons | 2005 | 135.9 | 2004 | 152.1 | -10.65% |
| EDUCATION | | | | | |
| % of Pop. (25 yrs. & older) with High School Degree | 2000 | 93.5% | 1990 | 89.3% | 4.70% |
| % of Pop. (25 yrs. & older) with Bachelor's Degree | 2000 | 44.1% | 1990 | 38.5% | 14.55% |
| ACT Average Composite Score (range 1-36) | 2004-05 | 23.6 | 2003-04 | 22.4 | 5.36% |
| Spring Semester Enrollment Albany County School District | 2006 | 3,466 | 2005 | 3,484 | -0.52% |
| Pupil -Teacher Ratio in Public Schools ⁴ | 2004-05 | 18 | 2003-04 | 11.9 | 51.26% |
| Public High School Graduation Rate ⁵ | 2003-04 | 80.6% | 2002-03 | 82.1% | -1.89% |
| Expenditures Per Pupil in Public Schools (\$) | 2004-05 | \$8,950 | 2003-04 | \$10,677 | -16.17% |
| Total School Enrollments Spring Semester | 2006 | 3,658 | 2005 | 3,692 | -0.92% |
| % of Students in Private Schools | 2006 | 1.9% | 2005 | 2.8% | -32.14% |
| % of Students Home-Schooled | 2006 | 3.4% | 2005 | 2.8% | 21.43% |
| Spring Semester Full-Time Equivalent (FTE) Enrollment at the University of Wyoming ⁶ | 2006 | 8,217 | 2004 | 8,350 | -1.59% |
| Average Student Age at UW (Fall Semester) | 2005 | 23.4 | 2004 | 23.5 | -0.43% |
| 4 -Year Graduation Rate at UW | 2000 | 25.7% | 1999 | 29.6% | -13.18% |
| Average Faculty Salary at UW (in thousands) | 2004-05 | \$65.0 | 2003-04 | \$61.9 | 5.01% |

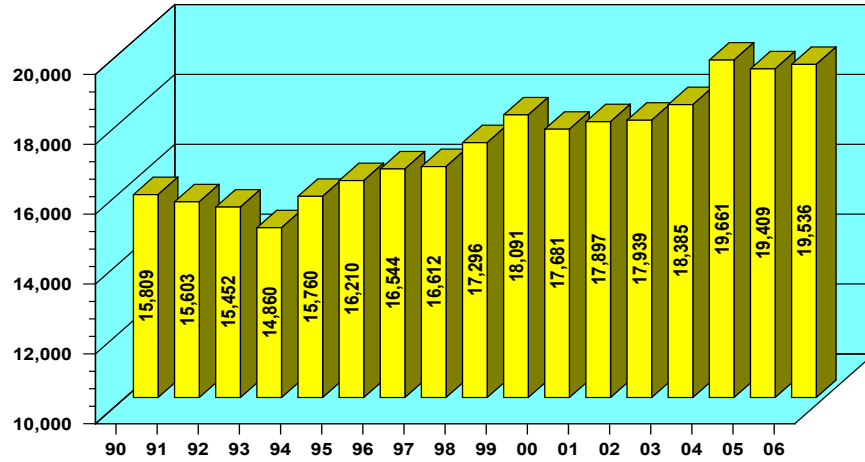
| | | | | | |
|---|------|----------|------|----------|---------|
| Spring Semester Full-time Equivalent (FTE) Enrollment at Laramie County Community College (Albany County Campus) ⁷ | 2006 | 534 | 2005 | 429 | 24.48% |
| HOUSING | | | | | |
| Average Rent for 2-3 Bedroom House (\$)⁸ | 4Q05 | \$805 | 4Q04 | \$849 | -5.18% |
| Average Rent for 2 Bedroom Apartment (\$) | 4Q05 | \$603 | 4Q04 | \$594 | 1.52% |
| Average Rent for 2-3 Bedroom Mobile Home (\$) | 4Q05 | \$549 | 4Q04 | \$541 | 1.48% |
| Rental Vacancy Rate¹ | 2000 | 5.2% | 1990 | 7.2% | -27.8% |
| ALBANY COUNTY'S ECONOMY | | | | | |
| Median Household Income | 2000 | \$28,790 | 1990 | | |
| Per Capita Personal Income (\$)⁹ | 2004 | \$29,810 | 2003 | \$27,998 | 6.47% |
| EMPLOYMENT & LABOR | | | | | |
| Average Annual Pay (\$)¹⁰ | 2005 | 26,197 | 2004 | 26,224 | -0.10% |
| Total Non-farm Employees⁹ | 2004 | 20,413 | 2003 | 20,181 | 1.15% |
| % of Employees in Mining | 2004 | 0.2% | 2003 | 0.2% | -12.12% |
| % of Employees in Government | 2004 | 36.8% | 2003 | 35.8% | 2.79% |
| % of Employees in Construction | 2004 | 5.0% | 2003 | 4.8% | 4.81% |
| % of Employees in Manufacturing | 2004 | 3.2% | 2003 | 3.4% | -4.92% |
| % of Employees in Leisure & Hospitality | 2004 | 10.4% | 2003 | 10.5% | -1.51% |
| % of Employees in Professional & Business Services | 2004 | 5.8% | 2003 | 6.3% | -8.49% |

Sources:

- 1 U.S. Census Bureau
- 2 Western Regional Climate Center
- 3 Wyoming Department of Criminal Investigation
- 4 Albany County School District
- 5 Wyoming Department of Education
- 6 Office of Institutional Analysis, University of Wyoming
- 7 Laramie County Community College
- 8 State of Wyoming, Dept. of Admin. & Info., Economic Analysis Division
- 9 U.S. Commerce Department, Bureau of Economic Analysis
- 10 U.S. Department of Labor, Bureau of Labor Statistics

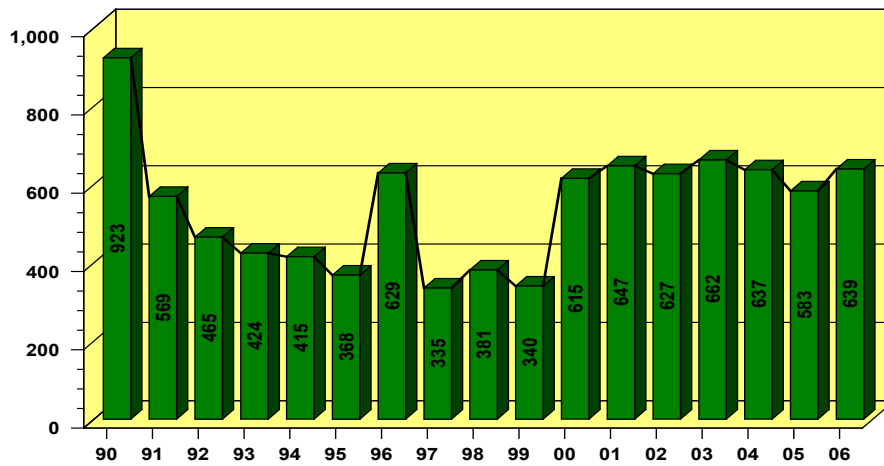
EMPLOYMENT, ALBANY COUNTY

MONTHLY AVERAGE
1990 - 2006



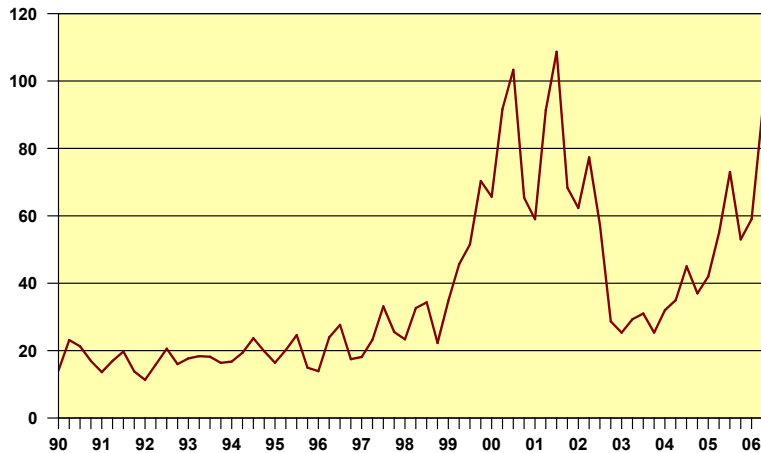
UNEMPLOYMENT, ALBANY COUNTY

MONTHLY AVERAGE
1990 - 2006



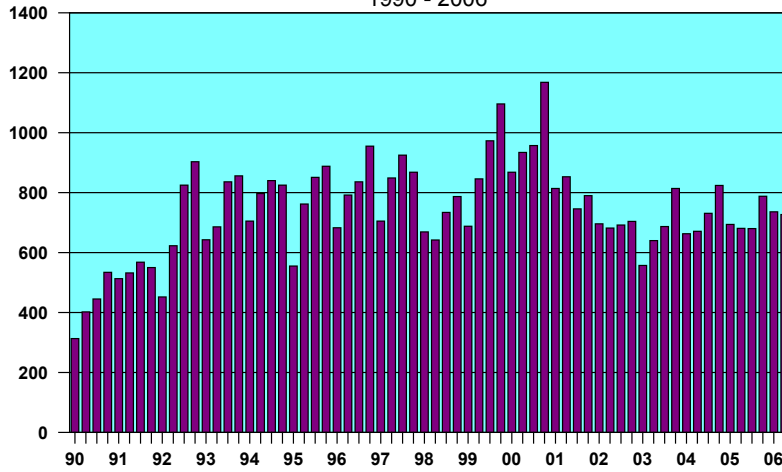
HELP - WANTED ADS, LARAMIE

QUARTERLY AVERAGES
1990 - 2006



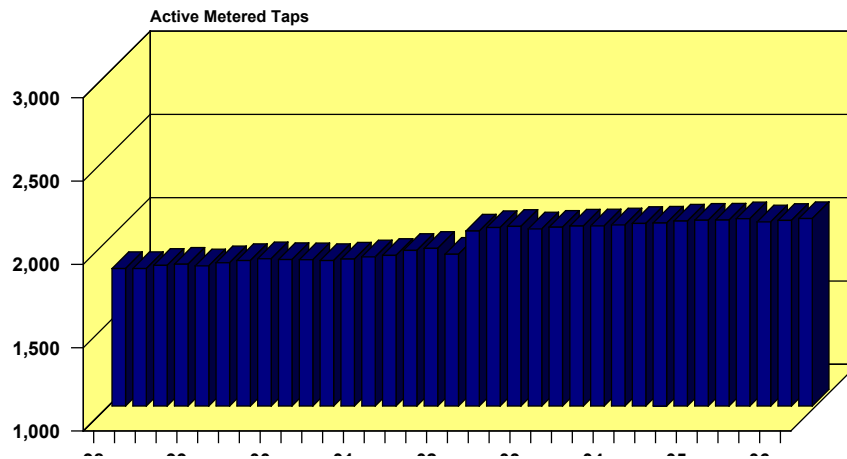
ENPLANEMENTS, LARAMIE AIRPORT

QUARTERLY AVERAGE
1990 - 2006

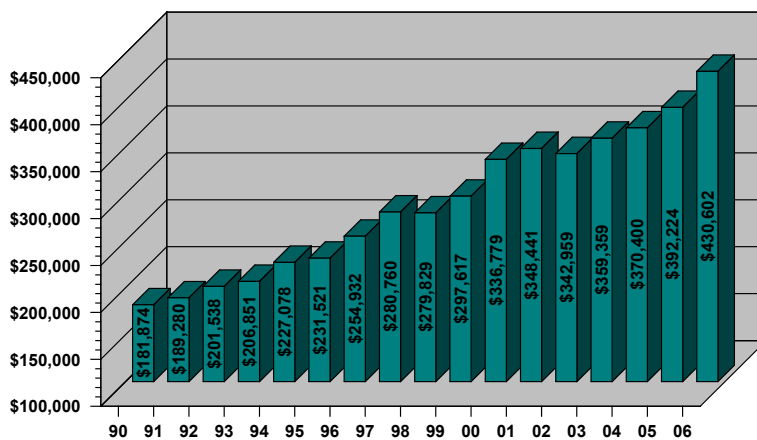


COMMERCIAL ELECTRIC POWER, LARAMIE

QUARTERLY AVERAGES
1998 - 2006

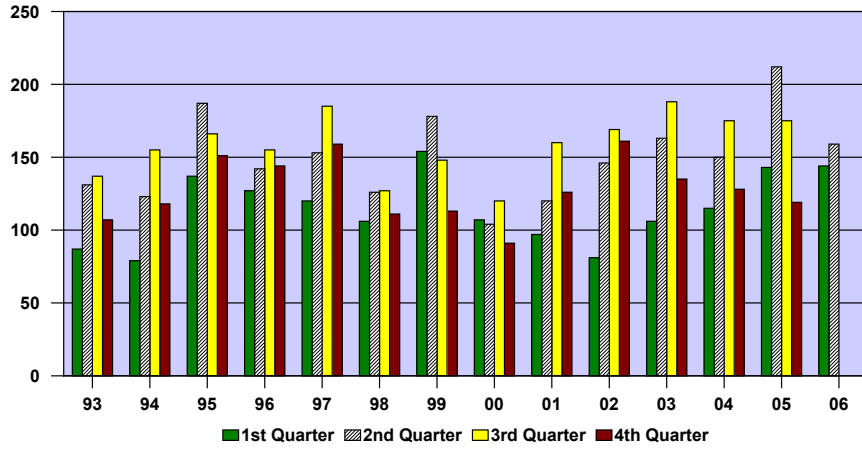


1% OPTIONAL SALES AND USE TAX DISTRIBUTIONS ALBANY COUNTY MONTHLY AVERAGE 1990 - 2006



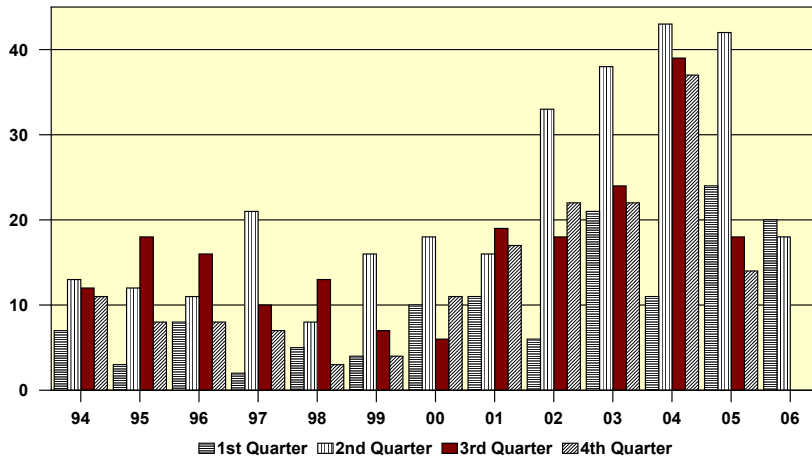
TOTAL BUILDING PERMITS, LARAMIE

QUARTERLY AVERAGES
1993 - 2006



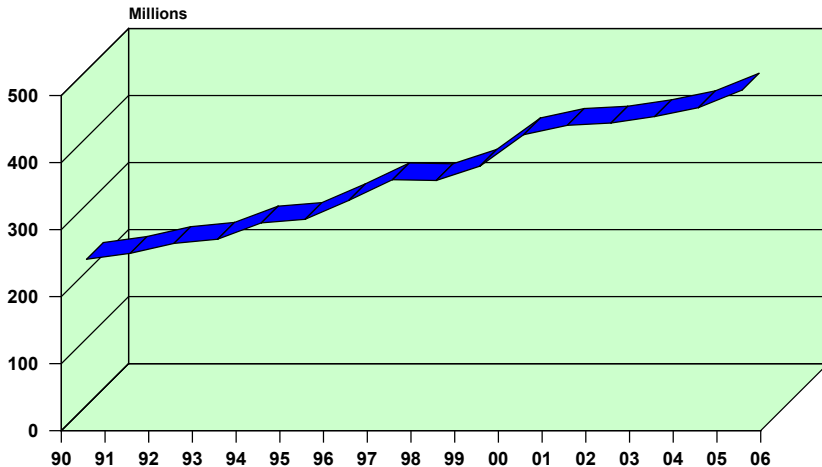
SINGLE-FAMILY BUILDING PERMITS, LARAMIE

QUARTERLY TOTALS
1994 - 2006



TOTAL TAXABLE SALES, ALBANY COUNTY

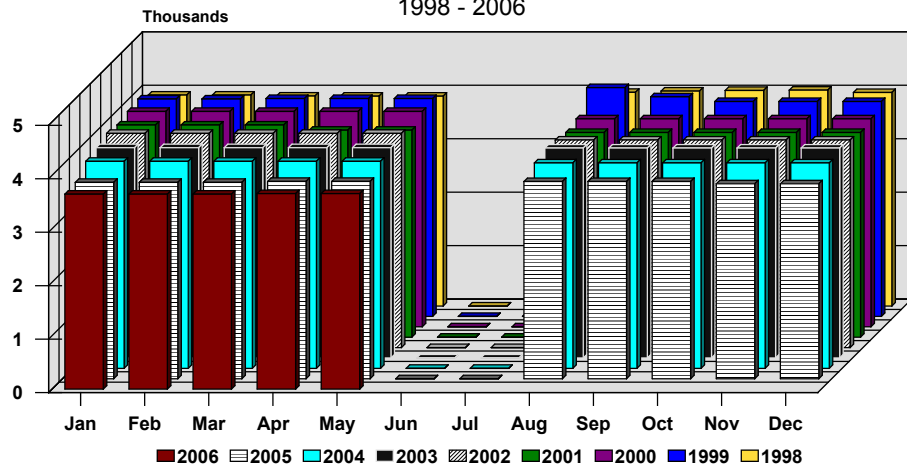
YEARLY TOTALS
1990 - 2006



ALBANY COUNTY SCHOOLS, TOTAL ENROLLMENT

MONTHLY TOTALS

1998 - 2006



DATA SOURCES

1. Automobile Registrations:
Albany County Clerk
 2. Construction, Permits, Valuation, Residential:
Laramie City Engineering Department
 3. Employment:
Wyoming Department of Employment
 4. Help-Wanted Index:
Wyoming Center for Business &
Economic Analysis, LLC.
 5. Sales and Use Tax Collections:
Wyoming Department of Revenue and Taxation
Department of Administration & Information
 6. Utilities:
Electrical - Pacific Power
Natural Gas - KN Energy
 7. Water Usage - Metered Taps:
Laramie City Building Department
 8. Enplanements:
Laramie Regional Airport
 9. Educational Data:
Albany County School District #1
St. Laurence Private School
University Of Wyoming
Laramie County Community College
 10. Rural Building Permits:
Albany County Planning Office
-

SPONSORS

We wish to acknowledge financial support from the following:

City of Laramie
Laramie Economic Development Corporation
Laramie Area Chamber of Commerce
1st Interstate Bank of Laramie
1st National Bank of Laramie