

Economic Indicators for the Laramie Area



Pictured is the New Wyoming Technology Business Center at the University of Wyoming

Wyoming Center for Business & Economic Analysis, LLC.

Volume X, Number 2
September, 2007

TABLE OF CONTENTS

FRONT MATTER	
Preface	ii
ECONOMIC ANALYSIS	
Economic Indicators Analysis	1
Data Tables	3
Laramie/Albany County Profile.....	9
Economic Indicator Graphs.....	11
Data Sources.....	15

COMMUNICATIONS

Data Center Phone: (307) 632-1347
Data Center FAX: (307) 632-1368
Editor e-mail: rto@wyomingeconomicdata.com
Mailing Address: Wyoming Center for Business &
Economic Analysis, LLC.
1912 Capitol Ave., Suite 317
Cheyenne, WY 82001

Editor R.T. O'Gara
Research Assistance..... Cynthia Branch
Typography Stacy Shultz-Bisset

For subscription rates, please see the last page.

The articles appearing in this publication represent the opinions of the authors and do not necessarily reflect the views of funding agencies and organizations. Duplication or quotation of material in this publication is welcomed, but it is requested that the Center be credited.

Statistics through June 2007
Released: September 2007

PREFACE

Readers should note that the *Economic Indicators for the Laramie Area* is published twice a year. An Annual Trends edition is published in March of each year and then a third quarter edition is published in September of each year. This report is for the third quarter of 2007.

New and Used Automobile registrations, water taps and gas hookup statistics were not available this quarter.

ECONOMIC INDICATORS

ANALYSIS

POPULATION

Recent population estimates from the U.S. Census Bureau reported that Albany County's population as of July 1, 2006 stood at 30,360 persons. Once again, this was a decrease from the previous year. In 2006, the Bureau reported the county's 2005 population at 30,837. Therefore, there was a loss of 477 persons which was a decline of 1.5 percent between 2005 and 2006. The Bureau has consistently reported declining population figures for the county since the 2000 Census. According to their figures, the county has now lost 1,654 individuals since the last official census (2000). And once again, we suggest that these constant estimated population declines are strongly contradicted by the overall economic growth experienced by Albany County since 2000. For instance, average monthly employment between December 2000 and December 2006 rose by 775 workers, an increase of 4.4 percent over this period.

EMPLOYMENT

Labor force statistics also moved in the opposite direction of the Census Bureau's reported population declines. Average monthly labor force figures grew by 665 persons between yearend 2000 and yearend 2006, an increase of 3.6 percent.

As of the second quarter 2007, the county's labor force was off by 639 persons from second quarter 2006, a decline of 3.4 percent. Please note that labor market data for 2007 is still preliminary and will be revised in future months. For the first six months of 2007, the monthly labor force averaged 18,621 as compared to 2006's monthly average of 18,961 persons. This was a decrease of 1.8 percent.

Second quarter employment also decreased from this time one year ago. The Wyoming Department of Employment statistics reported average monthly employment at 17,890 during the second quarter of 2007, this was a decline of 634 jobs (-7.4%) from second quarter 2006. The county's unemployment rate averaged 2.8 percent over this quarter, up marginally from last year's second quarter average of 2.7 percent.

On the positive side of the equation, help-wanted advertisements ballooned in the second quarter with an average of 119 per week, up 30.8 percent from this time one year ago. Please see Table 1 for additional details.

GENERAL BUSINESS

Automobile registrations statistics were not available this quarter.

Enplanements (out-bound airplane boardings) rose 7 percent from second quarter 2006 and stood 14 percent higher than levels from two years ago.

Retail sales, as measured by the proxy variable total taxable sales, were revised upwards from July 2006 through June 2007 in attempt to capture food sales that are no longer subject to sales taxes. This revision reduced the decline in retail sales we had been seeing for the past year in both Albany and Laramie Counties. However, retail sales still decreased from second quarter 2006 by 4 percent as reported in Table 1. We think this decline is in error given continued strong growth in personal income and employment and is rather a reflection that the Legislature under compensated local government entities for the loss in sales tax revenues due to the food tax exemption.

CONSTRUCTION

There were wide swings in the construction sector during the second quarter of 2007 on both commercial and residential sides. Single-family residential construction posted a 111 percent increase over second quarter 2006. Thirty-eight permits were issued over this quarter as compared to 18 from one year ago. However, while an impressive gain from a lack luster first quarter, the current level remained 10 percent behind second quarter 2005.

The average number of monthly permits (142) issued for all construction activity, in contrast to residential permits, fell 11 percent from second quarter 2006 and remained 33 percent behind second quarter 2005. Also average monthly dollar valuation of all new construction rose sharply (49%) from this time last year, but fell 60 percent from first quarter 2007 and 5 percent from two years ago. The dollar value of all authorized construction averaged 6.4 million dollars per month during the second quarter of 2007. First quarter valuation ran at 16 million dollars by comparison. This latter amount was driven by commercial construction, specifically a new hotel, a new medical building and the university's new indoor practice facility. The second quarter valuation figure mentioned above included permits for another hotel, an office building and a new Grease Monkey facility.

The monthly value of residential construction averaged 1.9 million dollars over the second quarter of 2007 as compared to \$721,500 in second quarter 2006. Further, the average value of each single-family permit issued during the current quarter was \$153,618 which was well ahead of last year's comparable value of \$117,819.

Rural building permits declined 19 percent from second quarter 2006 and were down 15 percent from the same period two years ago.

FINANCIAL ACTIVITY

Four out of five tax revenue series reported in Table 2 registered either high single or double digit declines during the second quarter of 2007. Total sales tax collections fell 16 percent from this time one year ago. Actual tax receipts to local governments dropped 17 percent from second quarter 2006 and were essentially unchanged from second quarter 2005. Some of these declines can be explained by the fact that in early 2006 there were some large utility

infrastructure construction projects that generated large amounts of use taxes. Tax revenues were, therefore, higher in 2006 than normal. The declines thus far in 2007 are probably somewhat overstated.

Receipts from the 3% Lodging Tax fared much better than the measures just mentioned. Revenues from this tax rose 19 percent from last year and 48 percent from two years ago.

UTILITIES

Commercial and residential electric utility indicators increased 1.8 percent and 1.5 percent respectively this quarter when compared to comparable 2006 data. More importantly, residential electric hookups stood 3.8 percent higher than those of 2 years ago and have risen 11.4 percent since 2000. This indicator would appear to contradict the Census Bureau's reported population declines since 2000.

TABLE 1

	A 2Q05	B 2Q06	C 1Q07	D 2Q07	PERCENTAGE CHANGE A TO D	PERCENTAGE CHANGE B TO D	PERCENTAGE CHANGE C TO D
EMPLOYMENT							
Total Civilian Labor Force	20,013	19,040	18,841	18,401	-8.05	-3.36	-2.34
Total Employment	19,392	18,524	18,305	17,890	-7.75	-3.42	-2.27
Total Unemployment	621	517	536	512	-17.55	-0.97	-4.48
Unemployment Rate	3.1%	2.7%	2.8%	2.8%	-9.68	3.70	0.00
Initial Unemployment Claims	10	8	22	14	40.00	75.00	-36.36
Help Wanted Ads	55	91	74	119	116.36	30.77	60.81
GENERAL BUSINESS ACTIVITY							
Auto Registrations New & Used	107	197	N/A	N/A	N/A	N/A	N/A
Enplanements - Laramie Regional Airport	681	727	745	775	13.80	6.60	4.03
Total Taxable Sales (\$000)	107,115	128,963	133,757	123,825	15.60	-3.98	-7.43
CONSTRUCTION							
Single Fam Bldg Permits - Laramie	42	18	15	38	-9.52	111.11	153.33
Total Bldg Permits - (Laramie) (a)	212	159	97	142	-33.02	-10.69	46.39
Rural Bldg Permits	20	21	7	17	-15.00	-19.05	142.86
Value of Authorized Construction (\$000)	6,764	4,296	15,984	6,405	-5.30	49.10	-59.93
Residential (\$000)	1,715	721	765	1,909	11.32	164.81	149.48
Total Business Construction (\$000)	2,615	0	12,358	2,078	-20.50		-83.18

(a) Data includes building and non-building.

Note: Each figure reported under Employment, General Business, and Construction is a monthly average for the quarter.

TABLE 1A

Housing Profile Albany County 2006 Authorized Construction by Permit					
MONTH	SFU	DUPLEX UNITS	TRI & FOUR PLEX	MULTI- FAMILY	TOTAL UNITS
January	7	0	0	0	7
February	10	0	12	0	22
March	13	4	12	0	29
April	14	0	32	18	64
May	10	2	12	0	24
June	23	0	0	0	23
July	9	0	0	0	9
August	10	0	0	0	10
September	10	0	0	9	19
October	13	0	0	0	13
November	13	0	0	6	19
December	5	0	24	42	71
Year to Date	137	6	92	75	310

Housing Profile Albany County 2007 Authorized Construction by Permit					
MONTH	SFU	DUPLEX UNITS	TRI & FOUR PLEX	MULTI- FAMILY	TOTAL UNITS
January	4	4	0		8
February	8	0	0	0	8
March	10	0	0	0	10
April	11	0	0	0	11
May	25	0	0	0	25
June	27	0	0	0	27
July					0
August					0
September					0
October					0
November					0
December					0
Year to Date	85	4	0	0	89

TABLE 2

	A 2Q05	B 2Q06	C 1Q07	D 2Q07	PERCENTAGE CHANGE A TO D	PERCENTAGE CHANGE B TO D	PERCENTAGE CHANGE C TO D
FINANCIAL ACTIVITY(a)							
Total Tax Collections (\$000)	6,579	7,927	7,232	6,642	0.96	-16.21	-8.16
Wholesale & Retail Tax Collections (\$000)	3,429	3,291	3,628	2,987	-12.89	-9.24	-17.68
Actual Receipts to County Entities (\$000) (b)	2,323	2,794	2,525	2,309	-0.61	-17.35	-8.54
Total 1% Sales & Use Tax Distributions (\$000)	1,071	1,290	1,174	1,074	0.29	-16.73	-8.46
Total 4% Lodging Tax Distributions (\$)	76,410	95,036	105,062	112,886	47.74	18.78	7.45

(a) All Series are reported as quarterly totals

(b) This total includes the 4% Sales and 4% Use Tax, the 1% Sales and 1% Use Tax, the Out of State Use Tax, and the Out of State Sales Tax. As of July 1, 1993, the state sales and use tax levy was changed from 3% to 4%. The percentage of these revenues distributed to municipalities change over time and presently it is 29.5%.

TABLE 3

	A 2Q05	B 2Q06	C 1Q07	D 2Q07	PERCENTAGE CHANGE A TO D	PERCENTAGE CHANGE B TO D	PERCENTAGE CHANGE C TO D
UTILITIES							
Residential Electric Hookups - Active Meters	12,773	13,064	13,271	13,262	3.83	1.52	-0.07
Commercial Electric Hookups - Active Meters	2,116	2,125	2,148	2,164	2.27	1.84	0.74
Industrial Electric Hookups - Active Meters	21	21	21	21	0.00	0.00	0.00
Residential Gas Hookups - Active Meters	9,761	9,929	N/A	N/A	N/A	N/A	N/A
Commercial Gas Hookups - Active Meters	931	1,098	N/A	N/A	N/A	N/A	N/A
Metered Taps - Water (a)	N/A	N/A	N/A	N/A	N/A	N/A	N/A
EDUCATION							
School Enrollments							
Districts #1 and #2	3,484	3,466	3,447	3,426	-1.15	-1.15	-0.61
Private Schools	104	68	71	71	-31.73	4.41	0.00
Home School	104	124	129	129	24.04	4.03	0.00
Avg. Total School Enrollment	3,694	3,638	3,518	3,497	-5.33	-3.88	-0.60
University of Wyoming (Headcount) (b)	3,193	2,978	9,064	N/A	N/A	N/A	N/A
University of Wyoming (FTE) (b)	1,190	1,095	8,215	N/A	N/A	N/A	N/A
LCCC - Albany Co. campus (FTE) (b)	54	76	578	74	37.04	-2.63	-87.20
LCCC - Albany Co. campus (Headcount)	146	332	1,103	195	33.56	-41.27	-82.32
Wyoming Technical Institute	2,124	1,947	1,577	1,353	-36.30	-30.51	-14.20

Note: Figures reported are an average for the three months.
N/A indicates the information was not available.

(a) Metered water taps are billed quarterly. Figures reported are total number of taps billed per quarter.

(b) University of Wyoming figures are for the main campus only.

TABLE 4

	JAN	FEB	MAR	APR	MAY	JUN	JUL	AUG	SEP	OCT	NOV	DEC	AVG	YEAR
EMPLOYMENT														
Total Civilian Labor Force	19,277	19,516	19,720	19,585	19,111	18,425	17,984	17,596	18,363	19,262	19,479	19,209	18,961	2006
	18,714	18,936	18,874	18,765	18,729	17,710							18,621	2007
Total Employment	18,664	18,967	19,163	19,061	18,604	17,906	17,517	17,131	17,889	18,811	18,999	18,761	18,456	2006
	18,140	18,446	18,329	18,285	18,207	17,177							18,097	2007
Total Unemployment	613	549	557	524	507	519	467	465	474	451	480	448	545	2006
	574	490	545	480	522	533							524	2007
Unemployment Rate	3.2%	2.8%	2.8%	2.7%	2.7%	2.8%	2.6%	2.6%	2.6%	2.3%	2.5%	2.3%	2.7%	2006
	3.1%	2.6%	2.9%	2.6%	2.8%	3.0%							2.8%	2007
Initial Unemployment Claims	16	10	33	10	10	5	11	12	6	8	9	15	12	2006
	27	12	28	15	12	16							18	2007
Help Wanted Ads	52	61	65	87	102	83	97	99	86	83	67	51	78	2006
	74	62	87	111	132	115							97	2007
GENERAL BUSINESS ACTIVITY														
New Car & Truck Sales	130	137	189	169	199	222	220	187	170	128	130	120	167	2006
	176	N/A	N/A	N/A	N/A	N/A							N/A	2007
Enplanements Laramie Reg. Airport	702	691	814	737	691	754	797	764	848	894	807	765	772	2006
	685	685	866	813	737	775							760	2007
Total Taxable Sales (\$)	40,139,638	41,023,680	48,234,220	25,318,354	43,806,678	59,838,458	44,184,026	54,985,611	38,765,581	52,067,537	79,761,922	68,975,480	49,758,432	2006
	49,391,427	46,921,723	37,443,945	40,504,762	43,619,332	39,701,015							42,930,367	2007

Table 5

	JAN	FEB	MAR	APR	MAY	JUN	JUL	AUG	SEP	OCT	NOV	DEC	AVG	YEAR
CONSTRUCTION														
Total Building Permits - Albany County	154	98	179	118	153	207	172	150	108	128	129	15	134	2006
	99	99	93	88	179	160							120	2007
Sing. Fam. Bldg. Perm. - Laramie	3	6	11	7	3	8	4	6	6	5	10	5	6	2006
	4	4	2	7	7	15							7	2007
Rural Bldg. Perm. - Albany County	5	7	6	15	19	28	16	9	8	13	7	3	11	2006
	7	6	7	3	20	28							12	2007
Value of Authorized Construction	1,482,530	3,860,324	10,073,505	4,524,655	5,114,957	3,249,365	2,259,680	4,199,528	4,929,843	4,613,493	4,151,307	6,702,844	4,596,836	2006
	2,800,940	11,501,696	33,649,814	3,062,521	10,961,882	5,191,910							11,194,794	2007
Business Construction	0	0	1,797,131	0	0	0	0	1,650,000	0	1,752,000	460,000	5,121	472,021	2006
	687,219	6,500,000	29,886,652	0	5,579,244	656,000							7,218,186	2007
Residential Construction	495,030	931,302	1,337,254	852,738	324,830	986,890	572,530	712,370	1,144,738	625,413	1,435,653	790,230	850,748	2006
	180,000	917,783	1,198,100	1,761,271	2,199,052	1,767,448							1,337,276	2007
UTILITIES														
Power Sales Commercial Active Meters	2,113	2,112	2,116	2,114	2,132	2,130	2,127	2,131	2,141	2,142	2,139	2,138	2,128	2006
	2,139	2,152	2,153	2,157	2,166	2,169							2,156	2007
Gas Consumption Residential Active Meters	9,929	9,929	9,929	9,929	9,929	9,929	9,929	9,929	9,929	9,929	9,929	9,929	9,929	2006
	N/A	N/A	N/A	N/A	N/A	N/A							N/A	2007
TAXES														
Total Sales and Use Tax Collections	2,464,855	2,523,943	2,965,377	1,561,734	2,698,640	3,666,843	2,401,106	3,075,253	2,086,511	2,903,380	4,577,990	3,894,018	2,901,638	2006
	2,700,554	2,553,556	1,978,038	2,153,587	2,368,543	2,119,750							2,312,338	2007
Wholesale and Retail Sales and Use Tax Collections	1,364,464	1,365,280	1,543,287	639,430	1,377,165	1,274,736	1,308,452	1,530,323	989,030	1,083,632	1,689,900	1,141,859	1,275,630	2006
	1,332,192	1,262,747	1,033,501	927,273	1,175,563	884,016							1,102,549	2007
1% Sales and Use Tax Receipts	401,396	410,237	482,342	253,184	438,067	598,385	387,161	495,177	332,977	465,996	742,940	635,076	470,245	2006
	439,235	414,538	319,760	350,369	381,514	342,331							374,625	2007
3% Lodging Tax Receipts	27,298	31,039	34,127	22,059	38,706	34,271	48,438	68,144	62,123	74,273	69,464	40,720	45,888	2006
	35,820	37,704	31,538	25,566	49,348	37,973							36,325	2007

LARAMIE/ALBANY COUNTY PROFILE 2007

ITEMS	MOST RECENT PERIOD		PREVIOUS PERIOD		% CHANGE IN VALUE
	YEAR	VALUE	YEAR	VALUE	
Demography					
Total Population ¹	2006	30,360	2005	30,837	-1.55%
Total Male Population	2005	15,587	2004	16,102	-3.20%
Total Female Population	2005	15,033	2004	15,295	-1.71%
% of Population - Under 20 Years Old	2005	16.6%	2004	16.8%	-1.19%
% of Population - 65 Years & Older	2005	8.8%	2004	8.5%	3.53%
Median Age	2005	26.8	2004	26.7	0.37%
% of Population - White Alone (Non-Hispanic)	2005	87.7%	2004	87.7%	0.00%
% of Population - Native American Alone	2005	10.0%	2004	10.0%	0.00%
% of Population - Hispanic or Latino	2005	6.8%	2004	6.9%	-1.45%
% of Households (HH) Headed by Married Couples	2000	42.0%	1990	46.2%	-9.09%
% of HH Headed by Single Female (w/own children <18 yrs.)	2000	7.5%	1990	8.0%	-6.25%
Weather & Geography					
Total Area (sq. miles) ¹	2000	4,273	-	-	
Water Area (sq. miles)	2000	36	-	-	
Mean Elevation (ft.)	2000	7,163	-	-	
Normal Mean Temperature (F) - Laramie ²	1966-2007	40.4	1971-2000	40.3	0.25%
Average Annual Precipitation (inches) - Laramie ²	1966-2007	10.7	1971-2000	11.7	-8.78%
Average Wind Speed (mph)	1996-2006	12.4	1992-2002	12.2	1.64%
Crime & Law Enforcement					
Crimes ³	2006	1,102	2005	1,098	0.36%
Crimes per 100,000 Persons	2006	3,528	2005	3,470	1.67%
Murders per 100,000 Persons	2006	9.4	2005	6.3	48.74%
Rapes per 100,000 Persons	2006	3.1	2005	3.2	-2.39%
Robberies per 100,000 Persons	2006	3.1	2005	6.3	-50.42%
Aggravated Assaults per 100,000 Persons	2006	100.0	2005	79	26.53%
Burglaries per 100,000 Persons	2006	468.5	2005	347.6	34.79%
Larcenies & Thefts per 100,000 Persons	2006	2661.3	2005	2,891.5	-7.96%
Motor Vehicle Thefts per 100,000 Persons	2006	196.8	2005	136.1	44.59%
Education					
% of Pop. (25 yrs. & older) with High School Degree	2000	93.5%	1990	89.3%	4.70%
% of Pop. (25 yrs. & older) with Bachelor's Degree	2000	44.1%	1990	38.5%	14.55%
ACT Average Composite Score (range 1-36)	2005-06	22.3	2004-05	23.6	-5.51%
Spring Semester Enrollment Albany County School District	2007	3,476	2006	3,466	0.29%
Pupil-Teacher Ratio in Public Schools ⁴	2005-06	19	2004-05	18	5.56%
Public High School Graduation Rate ⁵	2004-05	84.7%	2003-04	80.6%	5.14%
Expenditures Per Pupil in Public Schools (\$)	2005-06	\$10,260	2004-05	\$8,950	14.64%

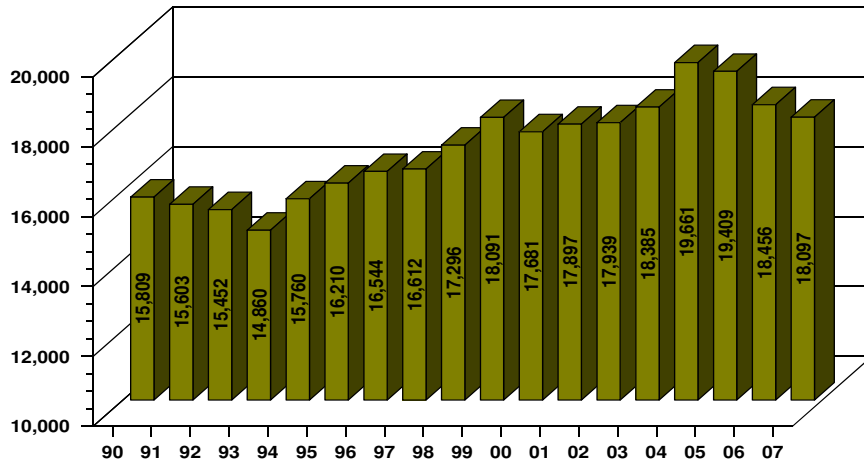
Total School Enrollments Spring Semester	2006	3,658	2005	3,692	-0.92%
% of Students in Private Schools	2006	1.9%	2005	2.8%	-32.14%
% of Students Home-Schooled	2006	3.4%	2005	2.8%	21.43%
Spring Semester Full-Time Equivalent (FTE) Enrollment at the University of Wyoming ⁶	2007	8,215	2006	8,217	-0.02%
Average Student Age at UW (Spring Semester)	2006	27.7	2005	27.7	0.00%
4-Year Graduation Rate at UW	2001	26.2%	2000	25.7%	1.95%
Average Faculty Salary at UW (in thousands)	2005-06	\$65.2	2004-05	\$65.1	0.15%
Spring Semester Full-time Equivalent (FTE) Enrollment at Laramie County Community College (Albany County Campus) ⁷	2007	317	2006	534	-40.73%
Housing					
Average Rent for 2-3 Bedroom House (\$) ⁸	4Q06	\$834	4Q05	\$805	3.60%
Average Rent for 2 Bedroom Apartment (\$)	4Q06	\$602	4Q05	\$603	-0.17%
Average Rent for 2-3 Bedroom Mobile Home (\$)	4Q06	\$550	4Q05	\$549	0.18%
Rental Vacancy Rate ¹	2000	5.2%	1990	7.2%	-27.8%
Albany County's Economy					
Median Household Income ¹¹	2004	\$34,627	2003	\$33,882	2.2%
Per Capita Personal Income (\$) ⁹	2005	\$31,165	2004	\$29,674	5.02%
Employment & Labor					
Average Annual Pay (\$) ¹⁰	2006	30,442	2005	29,093	4.64%
Total Non-farm Employees ⁹	2005	20,888	2004	20,595	1.42%
% of Employees in Mining	2005	0.1%	2004	0.2%	-28.05%
% of Employees in Government	2005	37.3%	2004	37.8%	-1.26%
% of Employees in Construction	2005	5.2%	2004	4.9%	4.79%
% of Employees in Manufacturing	2005	3.0%	2004	3.2%	-4.72%
% of Employees in Leisure & Hospitality	2005	10.1%	2004	10.2%	-1.26%
% of Employees in Professional & Business Services	2005	6.3%	2004	5.8%	8.42%

Sources:

- ¹ U.S. Census Bureau
- ² Western Regional Climate Center
- ³ Wyoming Department of Criminal Investigation
- ⁴ Albany County School District
- ⁵ Wyoming Department of Education
- ⁶ Office of Institutional Analysis, University of Wyoming
- ⁷ Laramie County Community College
- ⁸ State of Wyoming, Dept. of Admin. & Info., Economic Analysis Division
- ⁹ U.S. Commerce Department, Bureau of Economic Analysis
- ¹⁰ U.S. Department of Labor, Bureau of Labor Statistics
- ¹¹ U.S. Census Bureau - Small Area Income & Poverty Estimates

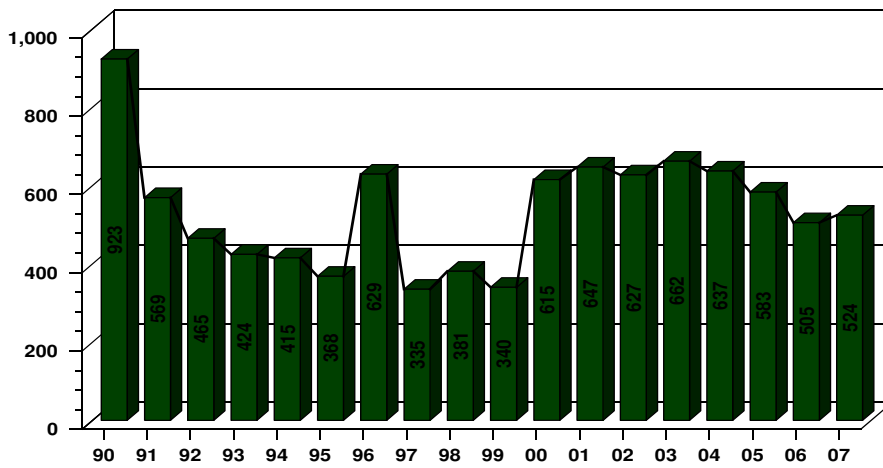
EMPLOYMENT, ALBANY COUNTY

MONTHLY AVERAGE
1990 - 2007



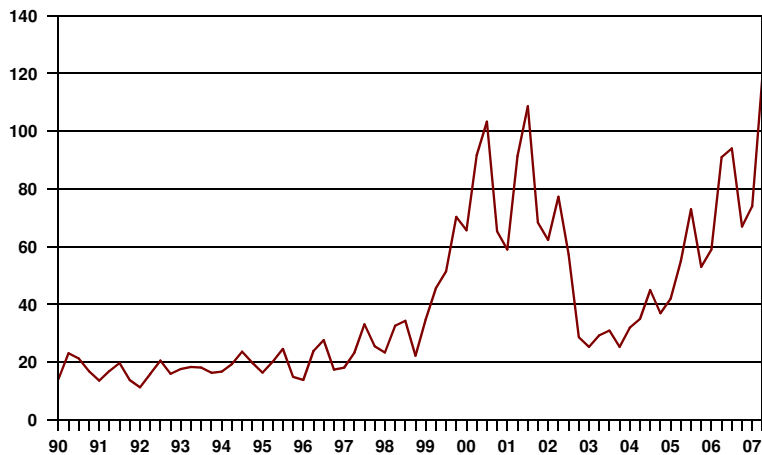
UNEMPLOYMENT, ALBANY COUNTY

MONTHLY AVERAGE
1990 - 2007



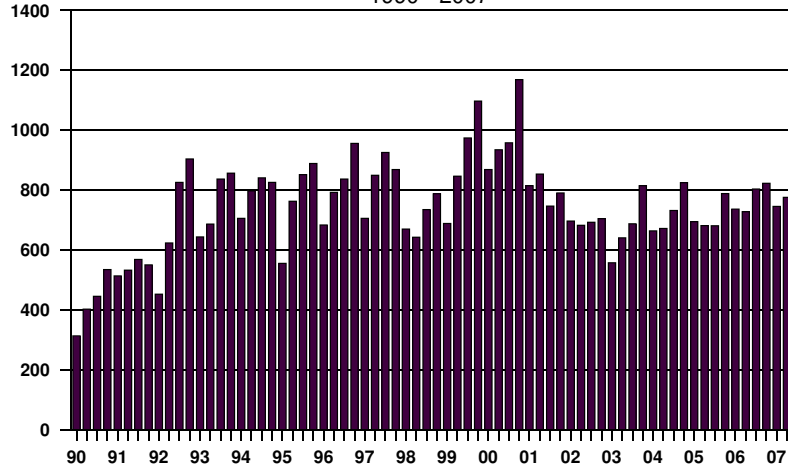
HELP - WANTED ADS, LARAMIE

QUARTERLY AVERAGES
1990 - 2007



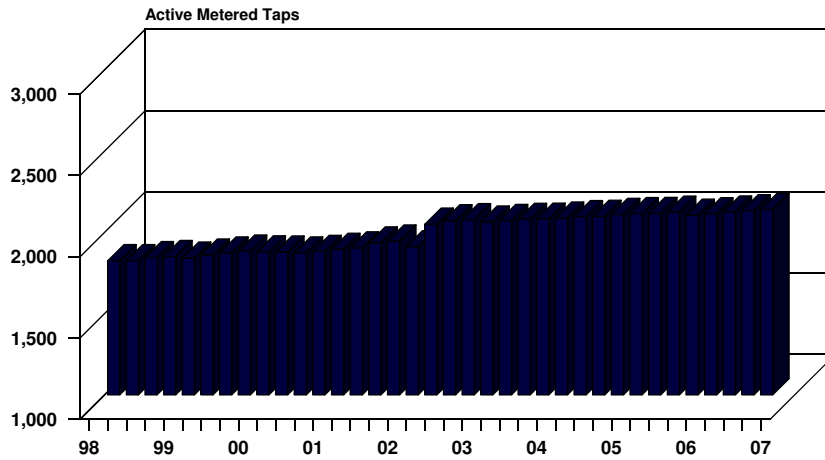
ENPLANEMENTS, LARAMIE AIRPORT

QUARTERLY AVERAGE
1990 - 2007



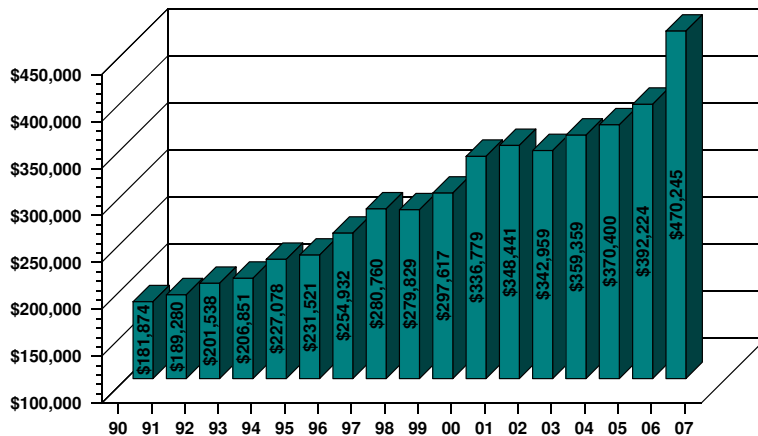
COMMERCIAL ELECTRIC POWER, LARAMIE

QUARTERLY AVERAGES
1998 - 2007



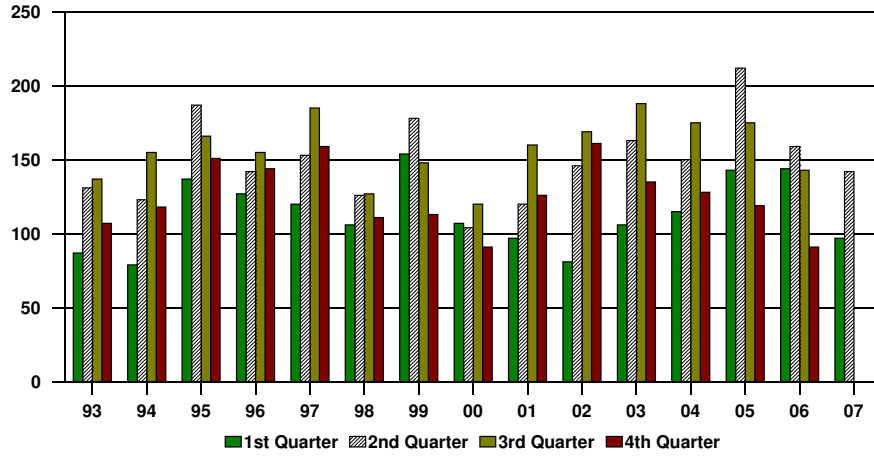
1% OPTIONAL SALES AND USE TAX DISTRIBUTIONS ALBANY COUNTY

MONTHLY AVERAGE
1990 - 2007



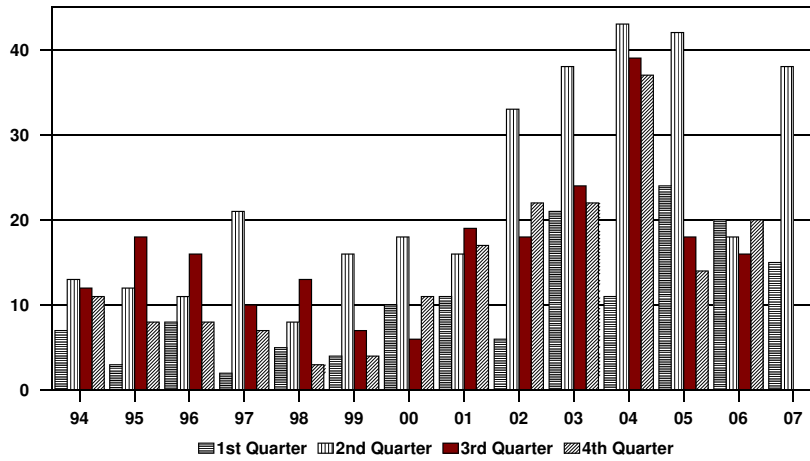
TOTAL BUILDING PERMITS, LARAMIE

QUARTERLY AVERAGES
1993 - 2007



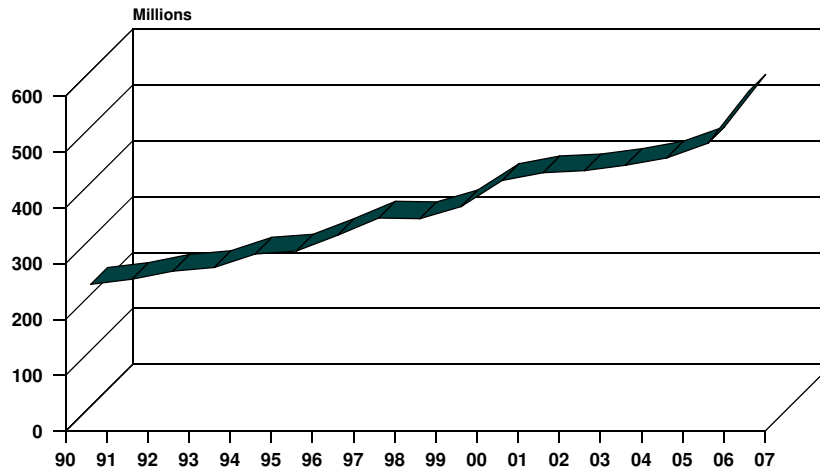
SINGLE-FAMILY BUILDING PERMITS, LARAMIE

QUARTERLY TOTALS
1994 - 2007



TOTAL TAXABLE SALES, ALBANY COUNTY

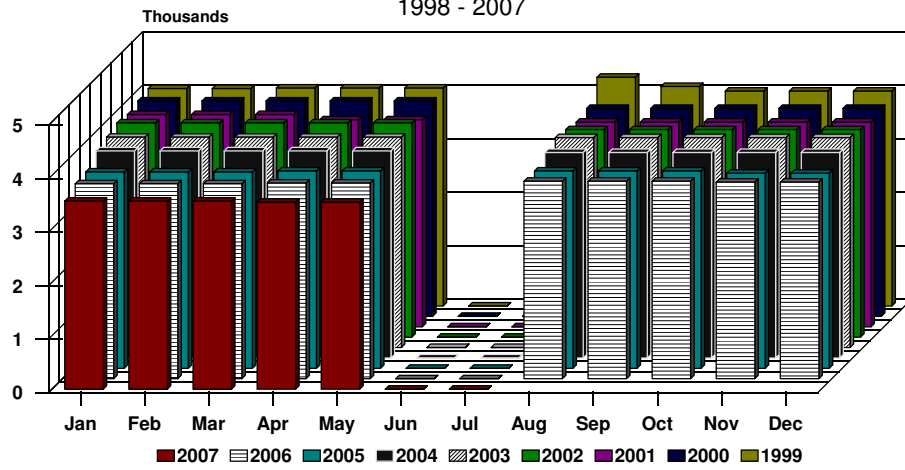
YEARLY TOTALS
1990 - 2007



ALBANY COUNTY SCHOOLS, TOTAL ENROLLMENT

MONTHLY TOTALS

1998 - 2007



DATA SOURCES

1. Automobile Registrations:
Albany County Clerk
 2. Construction, Permits, Valuation, Residential:
Laramie City Engineering Department
 3. Employment:
Wyoming Department of Employment
 4. Help-Wanted Index:
Wyoming Center for Business &
Economic Analysis, LLC.
 5. Sales and Use Tax Collections:
Wyoming Department of Revenue and Taxation
Department of Administration & Information
 6. Utilities:
Electrical - Pacific Power
Natural Gas - Source Gas
 7. Water Usage - Metered Taps:
Laramie City Building Department
 8. Enplanements:
Laramie Regional Airport
 9. Educational Data:
Albany County School District #1
St. Laurence Private School
University Of Wyoming
Laramie County Community College
 10. Rural Building Permits:
Albany County Planning Office
-

SPONSORS

We wish to acknowledge financial support from the following:

City of Laramie
Laramie Economic Development Corporation
Laramie Area Chamber of Commerce
1st Interstate Bank of Laramie
1st National Bank of Laramie