

# **Economic Indicators for the Laramie Area**

Wyoming Center for Business & Economic Analysis, LLC.

Volume VIII, Number 2  
September, 2005



# TABLE OF CONTENTS

FRONT MATTER	
Preface .....	ii
ECONOMIC ANALYSIS	
Economic Indicators Analysis .....	1
Data Tables .....	3
Laramie/Albany County Profile.....	8
Economic Indicator Graphs.....	9
Data Sources.....	13

## COMMUNICATIONS

Data Center Phone: (307) 632-1347  
Data Center FAX: (307) 632-1368  
Editor e-mail: [rto@wyomingeconomicdata.com](mailto:rto@wyomingeconomicdata.com)  
Mailing Address: Wyoming Center for Business &  
Economic Analysis, LLC.  
1912 Capitol Ave., Suite 407  
Cheyenne, WY 82001

Editor .....R.T. O'Gara  
Research Assistance ..... Jill Reuer  
Typography ..... Stacy Shultz-Bisset

For subscription rates, please see the last page.

The articles appearing in this publication represent the opinions of the authors and do not necessarily reflect the views of funding agencies and organizations. Duplication or quotation of material in this publication is welcomed, but it is requested that the Center be credited.

## PREFACE

Readers should note that the *Economic Indicators for the Laramie Area* is now published twice a year. An Annual Trends edition is published in March of the year and then a third quarter edition will be published in September of each year. This report is the third quarter report for 2005.

City metered water taps were not available. Numerous attempts were made to obtain this information from the appropriate sources.

# ECONOMIC INDICATORS

## ANALYSIS

### POPULATION

The table immediately below presents the latest population estimates from the U.S. Census Bureau for Albany County and the City of Laramie. Population for both entities has steadily fallen since the 2000 Census. For the county, the 2004 estimated population had fallen by 541 persons or 1.7 percent from the 2000 Census. For the City of Laramie, its 2004 estimate was down by 763 individuals or 2.8 percent.

As readers will find in the following analysis, there are a number of local economic indicators that strongly suggest both the city and county populations have grown since the 2000 Census, not declined.

	POPULATION	
	ALBANY COUNTY	LARAMIE CITY
2000 Census	32,014	27,204
1-Jul-00	31,833	26,907
2001	31,847	26,859
2002	31,598	26,622
2003	31,542	26,515
2004	31,473	26,441

### EMPLOYMENT

The county's labor force declined by 1.6 percent from second quarter 2004 to second quarter 2005, down by 320 participants. There was no new job creation on a year-to-date basis with employment dropping 1.7 percent or 326 workers from one year ago. Both the number of unemployed workers and the unemployment rate were unchanged from second quarter 2004. The unemployment rate remained at 3.1 percent from one year ago and the number of unemployed persons changed by a net 6 workers, from an average of 626 in the second quarter of 2004 to an average 632 in the second quarter of 2005.

Help-wanted advertisements averaged 55 per week during the current quarter as compared to 35 from one year ago, a gain of 57 percent over this period. First quarter 2005's average by comparison was 42.

### GENERAL BUSINESS

The three indicators under this heading posted mixed results thus far in 2005. Automobile registrations decreased 42 percent from one year ago and were down 38 percent from second quarter 2003 also. These declines were contrary to the generally positive economic trends throughout

the county. Enplanements (out-bound airplane boardings) increased marginally during the quarter, up 1.5 percent from last year's second quarter. They increased 6 percent over second quarter 2003 numbers however.

On a quarter-to-quarter basis, retail sales were unchanged from levels of one year ago. However, on a monthly average basis, they were ahead of comparable 2004 levels by 1.7 percent. Also the series remained 10 percent ahead of comparable 2003 numbers. See Total Taxable Sales in Table 1 for additional details.

Data from the Wyoming Department of Employment showed that in 2002, 100 new firms were created in Albany County and these new firms employed 390 workers with an aggregate payroll of \$10,394,718. In 2003, 104 new firms started up in the county with total new jobs at 360. Total payroll for these workers was estimated at \$3,188,168 by comparison. Similar data for 2004 was not available at the time this report was prepared.

### CONSTRUCTION

There were pronounced conflicting signals in over all construction activity from levels of one year ago in the Laramie area. For instance, the total dollar valuation of all construction decreased marginally from second quarter 2004, off by 1.8 percent, but the total number of building permits soared by 41 percent or 62 permits over second quarter 2004.

The value of new residential construction moved negatively this quarter but its decline sharply exceeded that of over all construction valuation. The former fell by 20 percent this quarter. However, within city limits, the number of new single-family permits issued during the first two quarters of 2005 (66 permits) were up 18 percent or 12 permits over the first 2 quarters of 2004. Rural residential permits, on the other hand, were essentially unchanged over the same time period. In 2004, 75 rural permits were issued in the first 6 months of that year while 74 permits were issued in the first 6 months of 2005.

Adding to the conflicting messages within this sector was commercial construction. The monthly average dollar value of second quarter 2005 commercial construction registered a 95 percent increase over second quarter 2004, up \$1,275,000 per month. Please see Tables 1 and 5 for further details.

### FINANCIAL ACTIVITY

Measures of local government fiscal health (tax revenues) were, for practical purposes, unchanged from levels of one

year ago. For example, total tax collections were down 0.2 percent from second quarter 2004. Actual sales tax receipts to all county entities increased by 0.9 percent while 1% sales and use tax distributions fell 0.1 percent. Wholesale and retail tax collections posted the largest decline, off 12 percent from second quarter 2004.

Monthly lodging tax receipts for the first 6 months of 2005 (\$26,593) were ahead by 15 percent when compared to the first 6 months of 2004 (\$23,184).

## **UTILITIES**

Utility indicators were all comfortably ahead of comparable second quarter 2004 statistics. Residential electric hook-ups increased 2.3 percent (281 meter increase) from last year while residential gas hookups rose 2.5 percent (237 meters) over this same time period.

Electric meters at commercial establishments rose 1 percent on the same comparable basis as above and were 2 percent higher than second quarter 2003. Even more encouraging was the fact that commercial gas hook-ups jumped 19 percent over second quarter 2004, up 181 meters.

**TABLE 1**

	A 2Q03	B 2Q04	C 1Q05	D 2Q05	PERCENTAGE CHANGE A TO D	PERCENTAGE CHANGE B TO D	PERCENTAGE CHANGE C TO D
<b>EMPLOYMENT</b>							
Total Civilian Labor Force	19,181	20,409	20,773	20,089	4.73	-1.57	-3.29
Total Employment	18,863	19,783	19,851	19,457	3.15	-1.65	-1.98
Total Unemployment	318	626	633	632	98.74	0.96	-0.16
Unemployment Rate	1.6%	3.1%	3.1%	3.1%	93.75	0.00	0.00
Initial Unemployment Claims	7	10	16	10	42.86	0.00	-37.50
Help Wanted Ads	29	35	42	55	89.66	57.14	30.95
<b>GENERAL BUSINESS ACTIVITY</b>							
Auto Registrations New & Used	172	185	88	107	-37.79	-42.16	21.59
Enplanements - Laramie Regional Airport	640	671	694	681	6.41	1.49	-1.87
Total Taxable Sales (\$000)	97,280	107,231	118,926	107,115	10.11	-0.11	-9.93
<b>CONSTRUCTION</b>							
Single Fam Bldg Permits - Laramie	38	43	24	42	10.53	-2.33	75.00
Total Bldg Permits - (Laramie) (a)	163	150	143	212	30.06	41.33	48.25
Rural Bldg Permits	19	18	5	20	5.26	11.11	100.00
Value of Authorized Construction (\$000)	4,355	6,889	4,164	6,764	55.32	-1.81	62.44
Residential (\$000)	1,617	2,131	883	1,715	6.06	-19.52	94.22
Total Business Construction (\$000)	506	1,340	11	2,615	416.80	95.15	23672.73

(a) Data includes building and non-building.

Note: Each figure reported under Employment, General Business, and Construction is a monthly average for the quarter.

**TABLE 2**

	A 2Q03	B 2Q04	C 1Q05	D 2Q05	PERCENTAGE CHANGE A TO D	PERCENTAGE CHANGE B TO D	PERCENTAGE CHANGE C TO D
<b>FINANCIAL ACTIVITY(a)</b>							
Total Tax Collections (\$000)	5,982	6,592	6,994	6,579	9.98	-0.20	-5.93
Wholesale & Retail Tax Collections (\$000)	3,511	3,890	4,020	3,429	-2.34	-11.85	-14.70
Actual Receipts to County Entities (\$000) (b)	2,091	2,303	2,588	2,323	11.10	0.87	-10.24
1% Sales & Use Tax Distributions (\$000)	973	1,072	1,189	1,071	10.07	-0.09	-9.92
3% Lodging Tax Distributions (\$)	67,889	75,331	83,151	76,410	12.55	1.43	-8.11

(a) All Series are reported as quarterly totals

(b) This total includes the 4% Sales and 4% Use Tax, the 1% Sales and 1% Use Tax, the Out of State Use Tax, and the Out of State Sales Tax. As of July 1, 1993, the state sales and use tax levy was changed from 3% to 4%. The percentage of these revenues distributed to municipalities change over time and presently it is 29.5%

**TABLE 3**

	A 2Q03	B 2Q04	C 1Q05	D 2Q05	PERCENTAGE CHANGE A TO D	PERCENTAGE CHANGE B TO D	PERCENTAGE CHANGE C TO D
<b>UTILITIES</b>							
Residential Electric Hookups - Active Meters	12,241	12,492	12,752	12,773	4.35	2.25	0.16
Commercial Electric Hookups - Active Meters	2,073	2,096	2,115	2,116	2.07	0.95	0.05
Industrial Electric Hookups - Active Meters	22	22	21	21	-4.55	-4.55	0.00
Residential Gas Hookups - Active Meters	9,562	9,524	9,761	9,761	2.08	2.49	0.00
Commercial Gas Hookups - Active Meters	940	931	1,112	1,112	18.30	19.44	0.00
Metered Taps - Water (a)	7,789	N/A	N/A	N/A	N/A	N/A	N/A
<b>EDUCATION</b>							
School Enrollments							
Districts #1 and #2	3,659	3,639	3,462	3,462	-4.86	-4.86	0.00
Private Schools	116	129	104	104	-10.34	-19.38	0.00
Home School	106	106	104	104	-1.89	-1.89	0.00
Avg. Total School Enrollment	3,935	3,874	3,794	3,794	-3.58	-2.07	0.00
University of Wyoming (Headcount) (a)	3,255	3,221	9,165	3,183	-2.21	-1.18	-65.27
University of Wyoming (FTE) (b)	1,185	1,181	8,350	1,190	0.42	0.76	-85.75
LCCC - Albany Co. campus (FTE) (b)	75	68	429	54	-28.00	-20.59	-87.41
LCCC - Albany Co. campus (Headcount)	189	161	798	146	-22.75	-9.32	-81.70
Wyoming Technical Institute	1,681	1,981	2,320	2,124	26.35	7.22	-8.45

(a) Metered water taps are billed quarterly. Figures reported are total number of taps billed per quarter.

(b) University of Wyoming figures are for the main campus only.

Note: Figures reported are an average for the three months.

N/A indicates the information was not available.

**TABLE 4**

	JAN	FEB	MAR	APR	MAY	JUN	JUL	AUG	SEP	OCT	NOV	DEC	AVG	YEAR
<b>ALBANY COUNTY</b>														
<b>EMPLOYMENT</b>														
Total Civilian Labor Force	20,901 20,489	20,887 20,964	20,972 20,867	20,635 20,451	20,453 20,401	20,140 19,416	18,943	19,078	19,661	20,564	20,736	20,601	20,298 20,431	2004 2005
Total Employment	20,103 19,770	20,156 20,370	20,302 20,281	20,018 19,851	19,840 19,722	19,491 18,799	18,349	18,515	19,072	19,990	20,119	19,978	19,661 19,799	2004 2005
Total Unemployment	798 719	731 594	670 586	617 600	613 679	649 617	594	563	589	574	617	623	637 633	2004 2005
Unemployment Rate	3.8% 3.5%	3.5% 2.8%	3.2% 2.8%	3.0% 2.9%	3.0% 3.3%	3.2% 3.2%	3.1%	3.0%	3.0%	2.8%	3.0%	3.0%	3.1% 3.1%	2004 2005
Initial Unemployment Claims	11 24	18 14	12 11	11 10	9 9	9 11	17	7	9	20	14	23	13 13	2004 2005
Help Wanted Ads	28 39	28 39	40 48	35 58	35 54	35 54	38	55	43	45	33	34	37 49	2004 2005
<b>GENERAL BUSINESS ACTIVITY</b>														
New Car & Truck Sales	120 97	123 66	147 102	163 99	177 100	216 123	146	168	180	112	121	N/A	152 98	2004 2005
Enplanements Laramie Reg. Airport	627 634	638 657	723 792	642 686	668 730	702 627	706	732	756	814	758	901	722 688	2004 2005
Total Taxable Sales (\$)	31,291,000 37,319,823	37,478,500 38,393,620	38,106,300 43,212,735	31,988,800 32,686,616	34,442,669 36,021,204	40,819,897 38,406,971	30,106,297	41,533,976	40,327,655	36,566,931	41,892,616	39,945,549	37,040,016 37,673,495	2004 2005

**TABLE 5**

	JAN	FEB	MAR	APR	MAY	JUN	JUL	AUG	SEP	OCT	NOV	DEC	AVG	YEAR
<b>CONSTRUCTION</b>														
Total Building Permits - Albany County	111 175	104 120	129 135	167 202	121 179	161 256	187	174	165	130	125	130	142 178	2004 2005
Sing. Fam. Bldg. Perm. - Laramie	2 6	3 9	6 9	12 17	16 14	15 11	15	10	14	8	14	15	11 11	2004 2005
Rural Bldg. Perm. - Albany County	7 4	7 3	7 8	15 15	17 19	22 25	13	16	14	20	6	4	14 12	2004 2005
Value of Authorized Construction	5,206,072 5,483,979	924,610 2,206,428	1,547,898 4,801,930	9,251,108 4,799,339	6,925,840 7,022,515	4,490,657 8,468,866	11,168,687	3,850,750	7,027,646	1,726,888	3,732,603	2,570,963	4,868,644 5,463,843	2004 2005
Business Construction	0 0	82,907 31,500	0 1,895	100,000 130,000	3,457,000 3,147,500	462,000 4,566,048	204,250	0	590,000	0	0	0	408,013 1,312,824	2004 2005
Residential Construction	255,052 393,879	324,000 940,800	490,800 1,314,800	1,685,869 2,121,436	2,650,335 1,724,172	2,056,438 1,299,569	2,392,751	1,449,800	1,240,950	962,488	1,761,668	1,431,200	1,391,779 1,299,109	2004 2005
<b>UTILITIES</b>														
Power Sales Commercial Active Meters	2,087 2,115	2,089 2,115	2,085 2,116	2,093 2,121	2,099 2,114	2,097 2,113	2,098	2,090	2,105	2,107	2,108	2,112	2,098 2,116	2004 2005
Gas Consumption Residential Active Meters	9,524 9,761	9,524 9,761	9,524 9,761	9,524 9,761	9,524 9,761	9,524 9,761	9,563	9,563	9,563	9,563	9,563	9,563	9,544 9,761	2004 2005
<b>TAXES</b>														
Total Sales and Use Tax Collections	1,921,095 2,295,021	2,303,854 2,363,014	2,336,319 2,336,319	1,963,093 2,008,097	2,122,442 2,215,684	2,506,633 2,355,055	1,865,908	2,574,449	2,495,159	2,271,199	2,585,976	2,452,543	2,283,223 2,262,198	2004 2005
Wholesale and Retail Sales and Use Tax Collections	1,230,768 1,334,326	1,477,476 1,306,380	1,379,613 1,379,613	1,214,328 1,034,566	1,136,942 1,137,197	1,538,610 1,256,936	934,003	1,331,949	1,271,440	1,224,161	1,316,430	1,311,498	1,280,551 1,241,503	2004 2005
1% Sales and Use Tax Receipts	312,910 373,198	374,785 383,936	381,063 432,127	319,688 326,866	344,427 360,212	408,199 384,070	301,063	415,340	403,277	365,669	418,926	399,455	370,400 376,735	2004 2005
3% Lodging Tax Receipts	18,917 26,307	23,162 28,046	21,694 28,798	21,326 24,265	28,830 28,348	25,175 23,797	34,056	48,039	46,958	49,201	42,318	26,492	32,181 26,593	2004 2005

# LARAMIE/ALBANY COUNTY PROFILE 2004

City Population (2000 Census)	27,204
County Population (2000 Census)	32,014
City Population (2003 Census Est.)	26,956
County Population (2003 Census Est.)	31,887

## Employment Percentage by Industry

Farming	1.9	FIRE	5.4
Mining	0.5	Services	24.2
Construction	5.2	Gov't	34.5
Manuf.	3.4	Retail Trade	10.7
Trans & Util*	N/A	Wholesale	1.1

\*Note - Data is not available

## Taxes

No State Income Tax (personal or corporate); No inventory tax; 4% State Sales Tax; 1% Local Sales Tax; Gasoline Tax \$0.05/gallon; Property Tax - 120.5 mills on 9.5% of residential market value.

## Law Enforcement

### Area Crime Rate (1/20/05) per 100,000

	U.S. (2002)	Alb. Co. (2002)		U.S. (2002)	Alb. Co. (2002)
Larceny	2414.5	2816.2	Homicides	5.7	3.7
Rapes	32.1	14.8	Assaults	295.0	159.1
Burglaries	740.5	514.4	Car Thefts	433.4	170.2

## Education

Average daily teacher/pupil ratio	11.9
Expenditure/student	\$10,677
Average ACT 2000 Score	22.4

## Income

Per Capita -2002 BEA	\$26,379
Median Household Income (2000)	\$28,790
Wyo. Median Household Income (2000)	\$37,892

## Demographics

Households - County (2003 Census Est.)	15,723
Households - City (2000)	11,994
Median Age - County (2000)	25.3

## Employed Workforce Characteristics

Employment (2004)	19,264
Unemployment Rate	1.9%

## Average Weekly Wages (2003)

Agriculture	440	Retail Trade	336
Mining	842	Finance & Insurance	618
Construction	545	Services	366
Manufacturing	588	Local Government	579
Transp. & Warehousing	592	State Government	762
Wholesale Trade	625	Federal Government	869
Real Estate	295	Information	339

## Inflation

U.S. CPI (2004)	2.8%
Southeast Wyoming (2004)	4.4%

## Race (2000)

White	29,235	Native American	305
Hispanic	1,575	Asian	545
Black	354	Total	32,014

## Population Profile

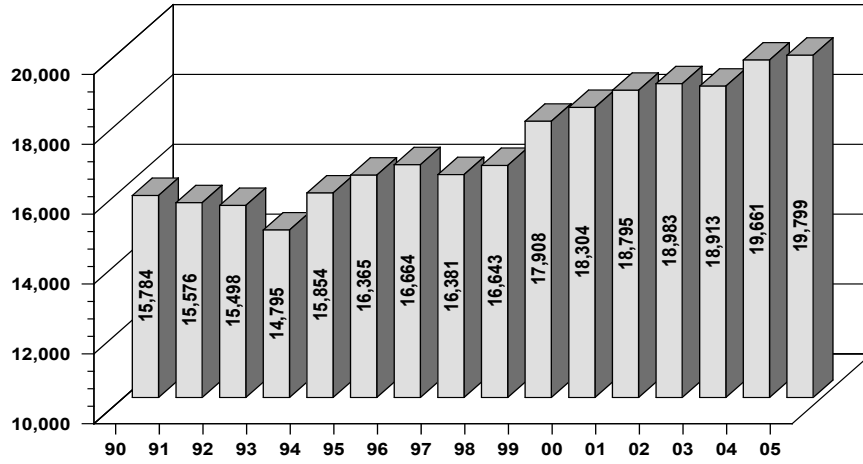
Total Population (2000 Census Estimate)	32,014
---	--------

## Age Distribution

Less than 5	1,630	45 - 49 years	2,140
5 - 9 years	1,575	50 - 54 years	1,805
10 - 14 years	1,614	55 - 59 years	1,218
15 - 19 years	3,634	60 - 64 years	948
20 - 24 years	6,463	65 - 69 years	759
25 - 29 years	2,753	70 - 74 years	647
30 - 34 years	1,840	75 - 79 years	555
35 - 39 years	1,746	80 - 84 years	389
40 - 44 years	2,002	85 and over	296

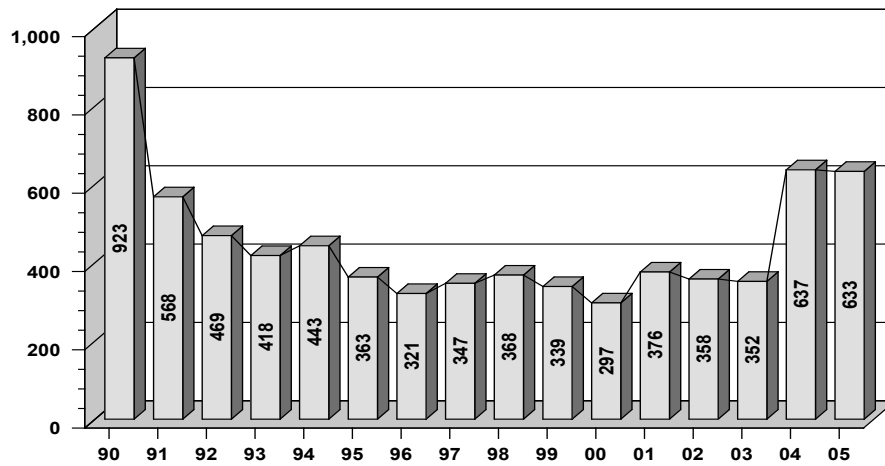
### EMPLOYMENT, ALBANY COUNTY

MONTHLY AVERAGE  
1990 - 2005



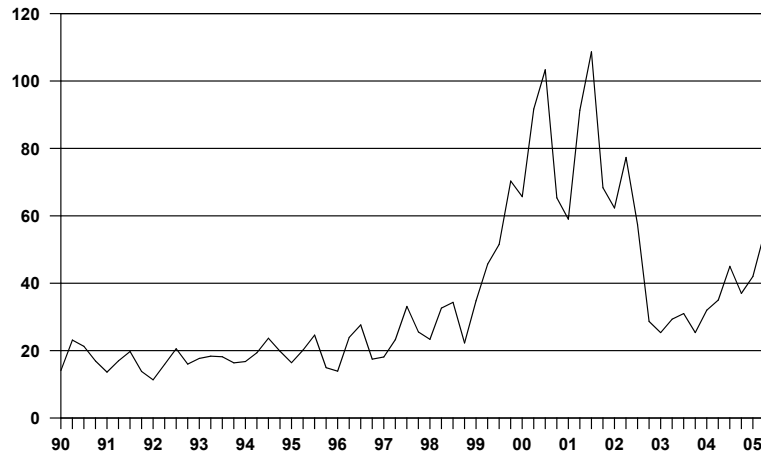
### UNEMPLOYMENT, ALBANY COUNTY

MONTHLY AVERAGE  
1990 - 2005



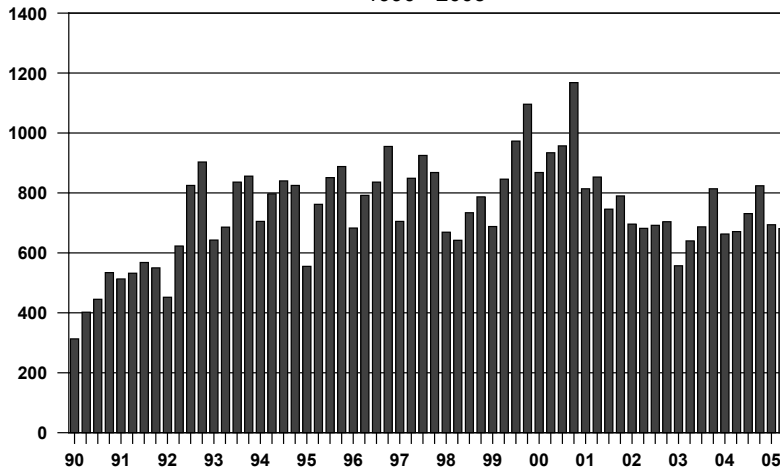
### HELP - WANTED ADS, LARAMIE

QUARTERLY AVERAGES  
1990 - 2005



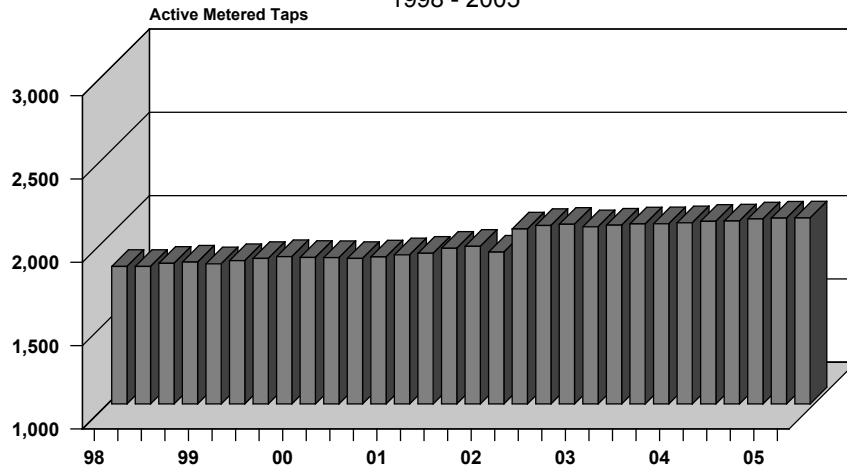
### ENPLANEMENTS, CHEYENNE AIRPORT

QUARTERLY AVERAGE  
1990 - 2005



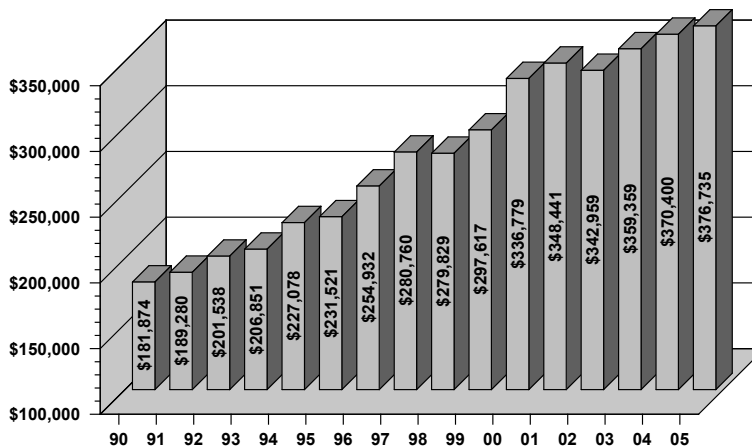
### COMMERCIAL ELECTRIC POWER, LARAMIE

QUARTERLY AVERAGES  
1998 - 2005



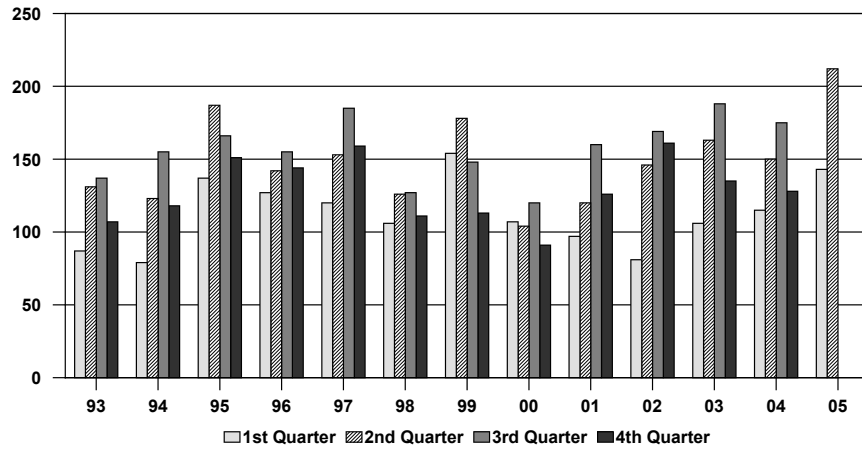
### 1% OPTIONAL SALES AND USE TAX DISTRIBUTIONS

ALBANY COUNTY  
MONTHLY AVERAGE  
1990 - 2005



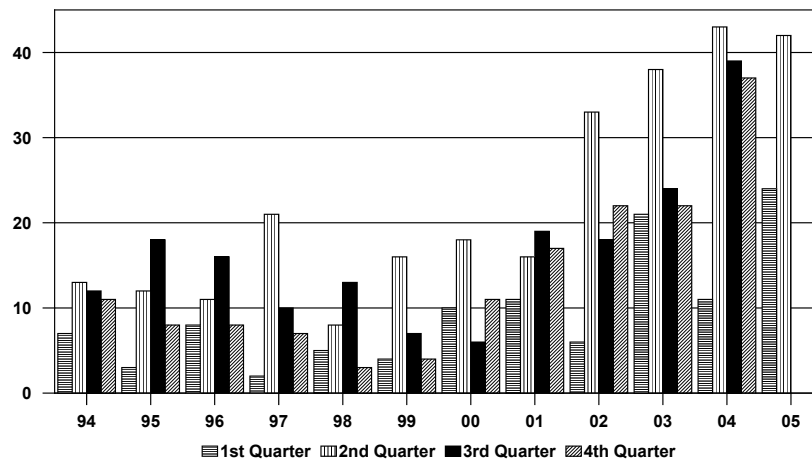
### TOTAL BUILDING PERMITS, LARAMIE

QUARTERLY AVERAGES  
1993 - 2005



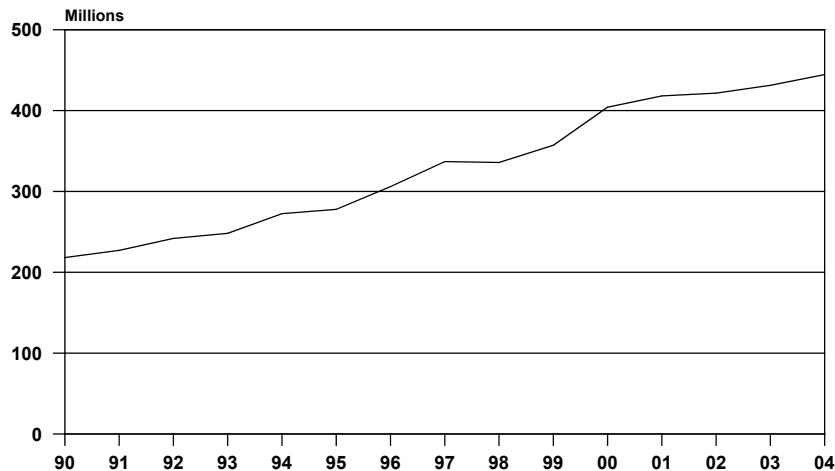
### SINGLE-FAMILY BUILDING PERMITS, LARAMIE

MONTHLY TOTALS  
1994 - 2005



### TOTAL TAXABLE SALES, ALBANY COUNTY

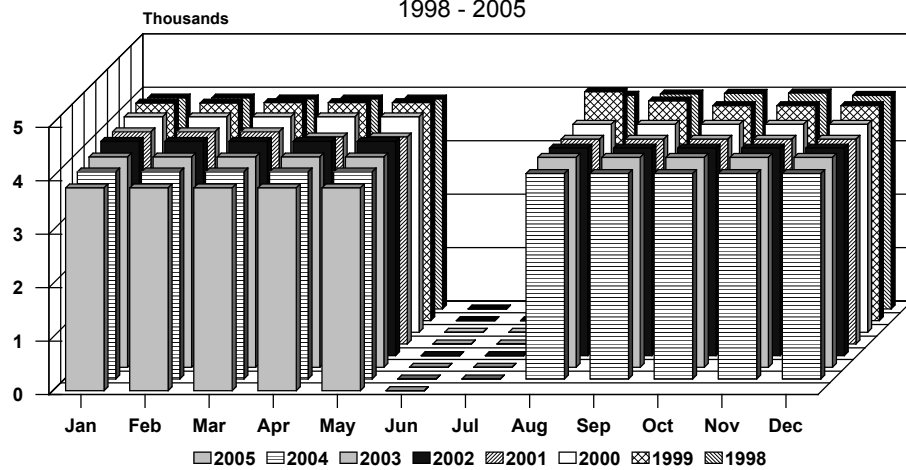
YEARLY TOTALS  
1990 - 2005



# ALBANY COUNTY SCHOOLS, TOTAL ENROLLMENT

## MONTHLY TOTALS

1998 - 2005



## DATA SOURCES

1. Automobile Registrations:  
Albany County Clerk
  2. Construction, Permits, Valuation, Residential:  
Laramie City Engineering Department
  3. Employment:  
Wyoming Department of Employment
  4. Help-Wanted Index:  
Wyoming Center for Business &  
Economic Analysis, LLC.
  5. Sales and Use Tax Collections:  
Wyoming Department of Revenue and Taxation  
Department of Administration & Information
  6. Utilities:  
Electrical - Pacific Power  
Natural Gas - KN Energy
  7. Water Usage - Metered Taps:  
Laramie City Building Department
  8. Enplanements:  
Laramie Regional Airport
  9. Educational Data:  
Albany County School District #1  
St. Laurence Private School  
University Of Wyoming  
Laramie County Community College
  10. Rural Building Permits:  
Albany County Planning Office
- 

## SPONSORS

We wish to acknowledge financial support from the following:

City of Laramie  
Laramie Economic Development Corporation  
Laramie Area Chamber of Commerce  
1st Interstate Bank of Laramie  
1st National Bank of Laramie